

# SNOW PUSHER

## RECOMMENDED APPLICATIONS:

The Snow Pusher is extremely handy for use at parking lots, gas stations, storage facilities, hospitals, airports, or any area you wish to remove snow from. The Werk-Brau snow pusher is a fast and effective tool that is easy to connect, and does less damage to surfaces than steel blade pushers.

## QUALITY CONSTRUCTION:

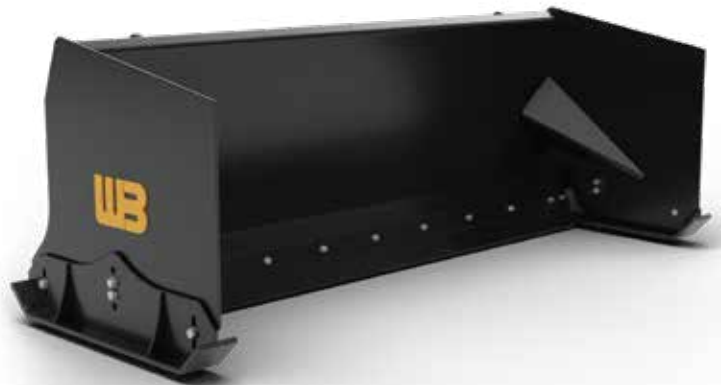
- 5/16" X 36" X 36" Side Plates w/ Tapered Channel Gussets
- Plow Face - 3/16" Steel Reinforced w/ (2) 1/4" Channel Stiffeners(Length of Blade)
- 1" X 6" Reversible Rubber Cutting Edge w/ three 1/2" Adjustable Slots
- 3/4" F400 Abrasion Resistant Replaceable Wear Shoes (Extends wear by 8X)
- Fully Welded Construction w/ 1/4" Rear Blade Gusset Supports
- Split Universal Quick-Attach plate
- Adjustable skid shoes – allows for easy adjustment and replacement as needed
- Interchangeable mount assembly allows for more versatility for multiple machine and coupler fleets

## CUTTING EQUIPMENT OPTIONS:

The Werk-Brau Snow-Pusher is equipped with an adjustable rubber cutting edge, which absorbs shock and resists loader blade impacts. It is ideal for removing wet, heavy snow and limits damage to most surfaces to minimal or no damage at all.

## ADDITIONAL FEATURES:

Proudly built in Findlay, OH. Special designs and capacities are available, please request a quote from your local dealer.



# SNOW PUSHER

## SNOW PUSHER

LOADER CLASS	PART NUMBER	COUPLER STYLE	TYPE	WEIGHT
<b>SSL, MINI, BH, 1</b>	WBSL2SP60-4	60"	4.00	650
	WBSL2SP72-5	72"	5.00	700
	WBSL3SP96-7	96"	7.00	800
	WBSL4SP120-9	120"	9.00	925
	WBSP144-11	144"	11.00	1,500
<b>2, 3, 3.5, 4</b>	WBSP120-12	120"	12.00	1,800
	WBSP144-15	144"	15.00	2,200
	WBSP168-18	168"	18.00	2,400
	WBSP192-21	192"	21.00	2,500
	WBSP216-23	216"	23.00	2,800