

Ditch Cleaning & Grading Buckets

Werk-Brau's Trademark High-Quality Construction

Werk-Brau's Ditch Cleaning & Grading Bucket is the perfect bucket for use in applications such as ditch maintenance, grading, construction, slope work and more.

- Werk-Brau's unique gusseted channel system yields the strongest and most reliable bucket manufactured in the industry
- High-strength steel is used in all wear components to reinforce the bucket's hefty build and structure.
- Each bucket is reinforced with industrial strength bottom wear straps to ensure a long operational life.

REQUEST A QUOTATION TO LEARN MORE ABOUT THE WERK-BRAU DIFFERENCE!

With over two-thirds of a century of manufacturing experience, Werk-Brau has earned its industry reputation for producing the highest-quality buckets and attachments on the market today.

SPECIAL DESIGNS

- Special Designs and Capacities
- Additional Add-ons Available upon Quotation
- Severe-Duty Model Available
- Extra Drainage Holes
- Aquatic Ditching Grading Bucket Model Available
- Hydraulic Ditching Grading Bucket Model Available

G.E.T. OPTIONS

Due to their unique application, these buckets do not come with teeth. Bolt-on cutting edges are optional. For severe-duty applications, please refer to the Severe-Duty Ditching and Grading Bucket.



WERK-BRAU CO., INC.

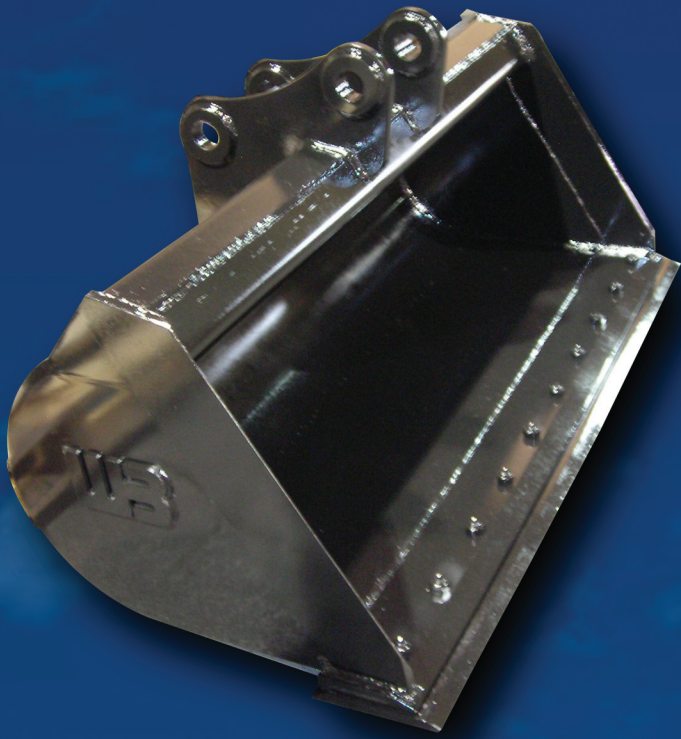
P.O. Box 545, Findlay, Ohio 45839

www.werk-brau.com

Contact a Representative Today

**Toll Free:
1-800-537-9561**

Ditch Cleaning & Grading Buckets



EXCAVATOR DITCH CLEANING & GRADING BUCKET

Metric Ton Class	Part Number	Bucket Width	Capacity Rated
Long Reach	1DCG**	48" to 60"	0.64 to 0.82
12, 15 & 20	1DCG**	48" to 78"	0.64 to 1.32
25	2DCG**	48" to 78"	1.08 to 2.02
30	3DCG**	54" to 84"	1.53 to 2.47
35	4DCG**	54" to 84"	1.67 to 2.70
40	5DCG**	60" to 84"	2.01 to 2.89
50	6DCG**	60" to 84"	2.40 to 3.81

BACKHOE DITCH CLEANING & GRADING BUCKET

Metric Ton Class	Part Number	Bucket Width	Capacity Rated
U1 & U2	3MNDCG**	30" to 60"	7.80 to 19.80
U5	5MNDCG**	42" to 60"	15.60 to 22.70



MINI-EXCAVATOR DITCH CLEANING & GRADING BUCKET

Metric Ton Class	Part Number	Bucket Width	Capacity Rated
76	76MNDCG**	24" to 48"	3.00 to 7.00
1 & 15	1MNDCG**	24" to 48"	4.25 to 8.50
2, 3, U1, & U2	3MNDCG**	30" to 60"	7.80 to 15.90
4	4MNDCG**	36" to 60"	11.70 to 19.80
5	5MNDCG**	42" to 72"	15.60 to 27.50



WERK-BRAU CO., INC.

P.O. Box 545, Findlay, Ohio 45839

www.werk-brau.com

Contact a Representative Today

Toll Free: 1-800-537-9561