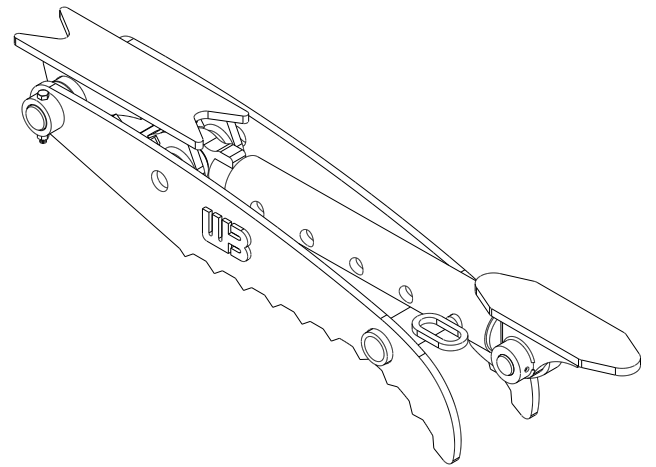
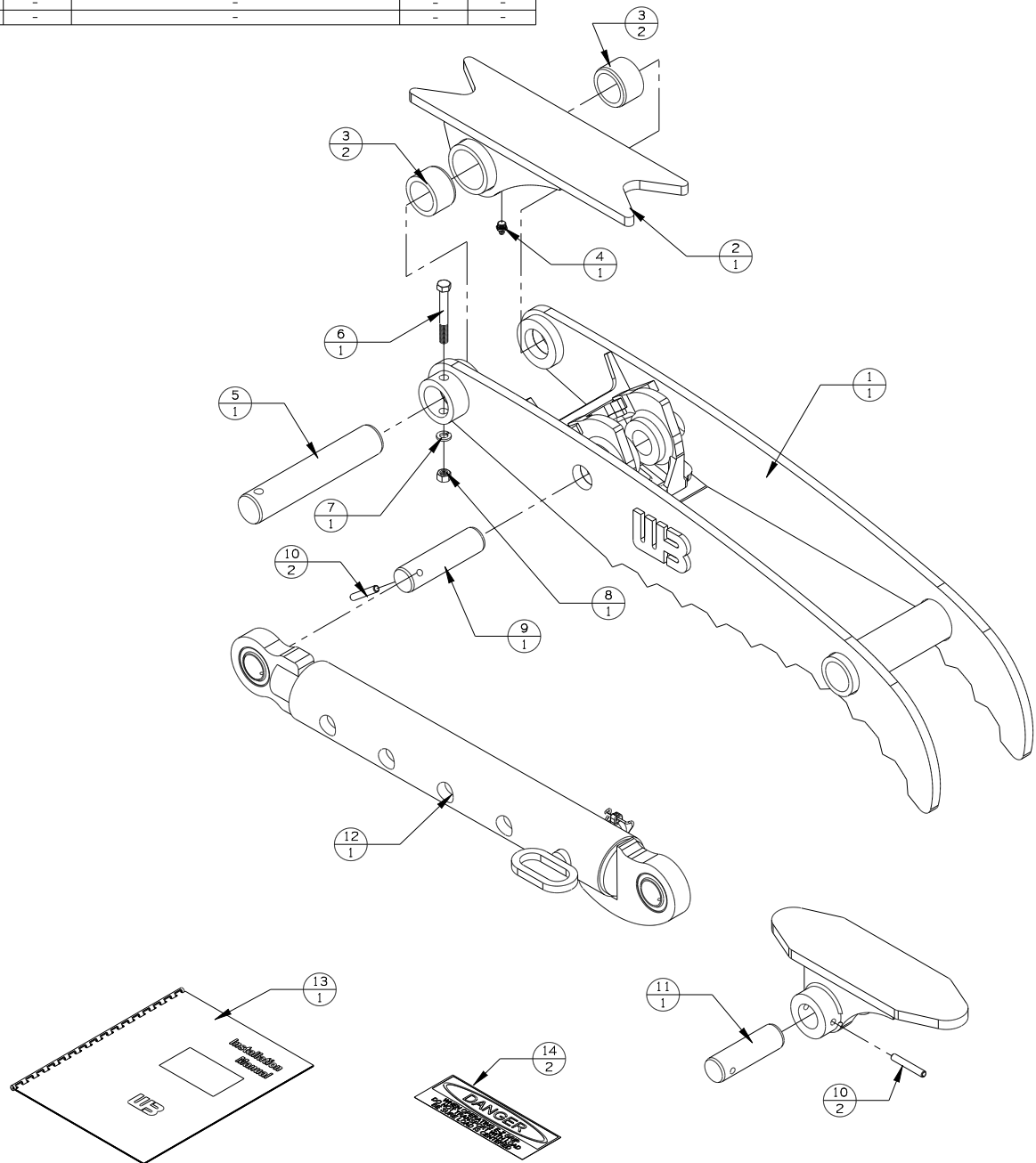


REV	DATE	CHANGE DESCRIPTION	BY	CHECKED
A	6-20-18	RELEASED TO PRODUCTION	JAS	-
-	-	-	-	-
-	-	-	-	-



EZG1-TC2-XX-R

#	DESCRIPTION	PART #	AMT
1	WELDED ASSEMBLY	EZG1-TC2-XX	1
2	PIVOT MOUNT	EZG1-TC2-MT	1
3	PIVOT BUSHING	EZG050STMT-PB	2
4	GREASE ZERK	60102	1
5	PIVOT PIN	EZG050STMT-PP	1
6	3/8-16 UNC X 3 BOLT	13115	1
7	3/8 LOCK WASHER	33622	1
8	3/8-16 UNC NUT	36306	1
9	CYLINDER PIN	EZG050-CP-1	1
10	ROLL PIN	64286	2
11	MOUNT PIN	EZG050-CP-2	1
12	CYLINDER	EZRG-5240	1
13	INSTRUCTIONS	-	1
14	DANGER STICKER	-	2

WB WERK-BRAU CO., INC.
 2800 FOSTORIA AVE. P.O. BOX 545 FINDLAY, OHIO 45840-0545
 www.werkbrau.com PHONE: 419-422-2912 FAX: 419-422-7207

INCH 1/X: ± 1/16 X: ± 1.50
 .X: ± .1 X.X: ± 0.80
 .XX: ± .01 X.XX: ± 0.25
 .XXX: ± .005 ANGLE ± 0.5°
 .XXXX: ± .0005 NOT TO SCALE

WELD SPEC: WELDS TO CONFORM TO P7.PRO6-WB ARC WELDING QUALITY STANDARD DATE: 6-20-18 WEIGHT: - Lbs.

MACHINE: - PART No.: EZG1-TC2-XX-R FILE NAME: EZG1-TC2-R-SPEC-PACKLIST.CKD

THIS PRINT AND THE INFORMATION CONTAINED HERE ON IS A CONFIDENTIAL DISCLOSURE, THE SUBJECT MATTER OF WHICH IS THE PROPERTY OF: WERK-BRAU CO., INC. DRAWN:

A
 REVISION