

# Grapple Rake

## Recommended Applications:

Excellent attachment for stacking and loading metal scrap, brush removal after land-clearing, refuse after clean-up, and other cumbersome material requiring the action of clamping for purposes of removal.

## Quality Construction:

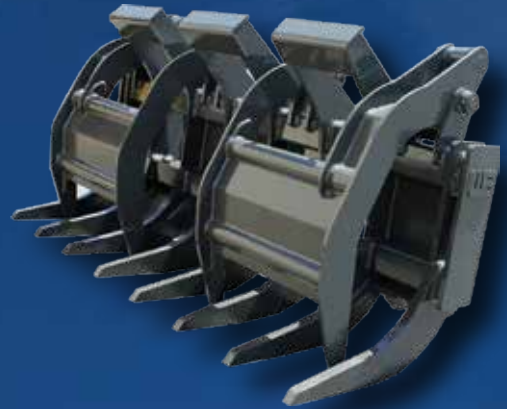
Grapple arms are hydraulically operated and constructed of high tensile strength steel. High strength, abrasion resistant steel is utilized throughout the entire weldment in all critical areas.

## Standard Sizes Available:

Widths range from 96" - 132". Other widths are available upon request for quotation.

## Additional Features:

Available with Werk-Brau front coupler or pin-up connection. Special designs and capacities are available, please request a quote from a Dealer or contact Werk-Brau directly.



Grapple Rake				
Loader Class	Part Number	Width	# of Tines	Weight
1 & 19BH	WL1GR96	96"	8	2600
2	WL2GR102	102"	8	4000
3	WL3GR102	102"	8	4500
4	WL4GR108	108"	9	7000
5	WL5GR120	120"	10	7400
6	WL6GR132	132	11	8800

WERK-BRAU CO., INC.

P.O. Box 545, Findlay, Ohio 45839 • [www.werk-brau.com](http://www.werk-brau.com) • Toll Free: 1-800-537-9561