

CLASS	MODEL(***)
MINI05	025
MINI76	050
MINI11	
MINI15	
MINI12	
UNIVERSAL	100
MINI3	
MINI4	200
MINI5	
UNIVERSAL 5	
F-490	300
F-11	
F-10	
F-6	400
F-8	
F-7	
F-4	
F-5	500
	600

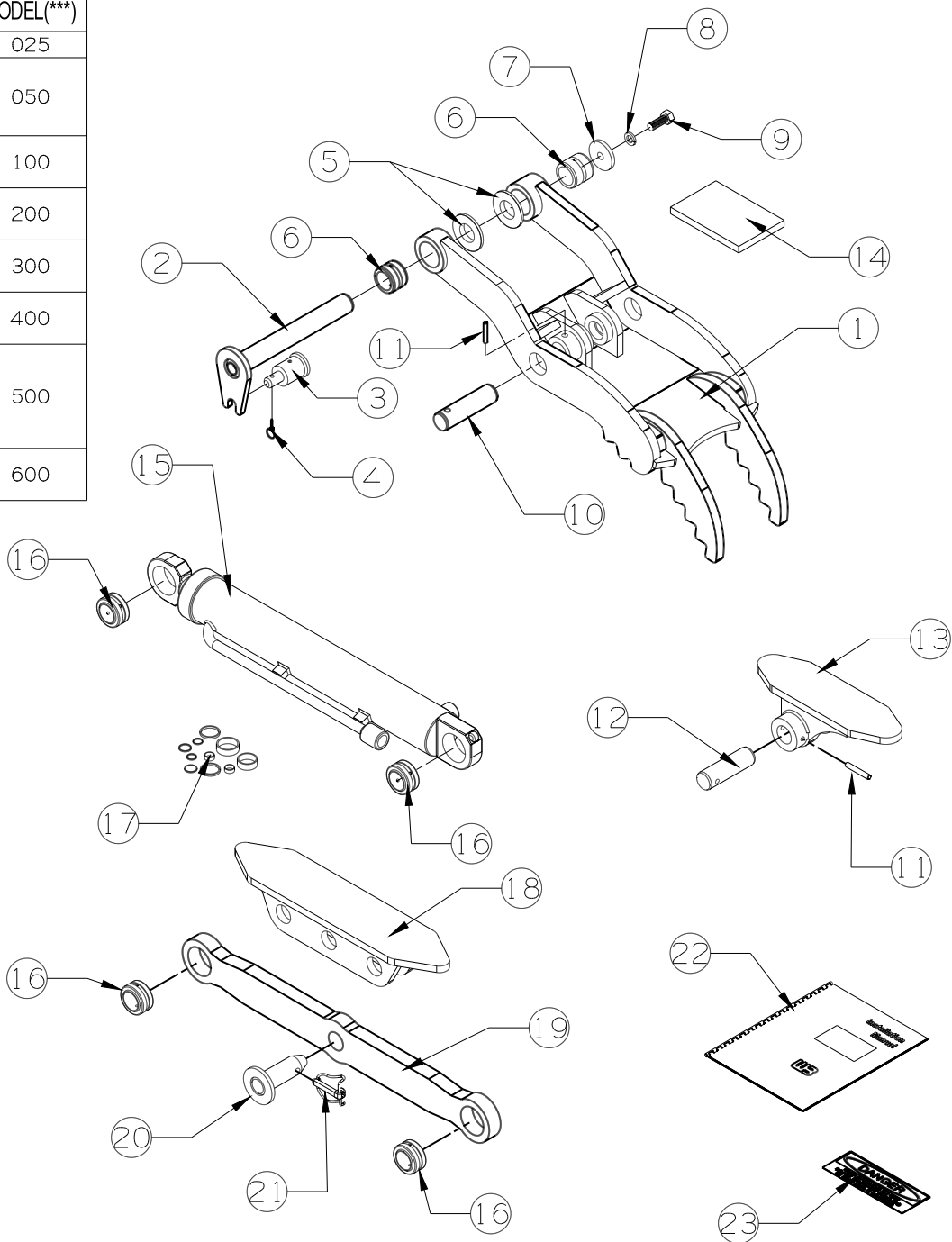
THUMB PARTS BREAK DOWN

MACHINE MODEL _____

SERIAL NUMBER _____

P.O. NUMBER _____

GRIP BREAKDOWN.CKD 4/28/14



#	DESCRIPTION	PART #	AMT
1	WELDED ASSEMBLY	N/A	1
2	PIVOT PIN	EZG***PP	1
3	PIN RETAINER	EZG***PR	N/A
4	LYNCH PIN	EZG***LPR	N/A
5	PIVOT SPACER	EZG***SP	N/A
6	PIVOT BUSHING	EZG***BU	2
7	PIVOT PIN CAP	EZG***PC	N/A
8	LOCK WASHER	EZG***PCLW	N/A
9	BOLT	EZG***PCB	N/A
10	CYLINDER/GRIP PIN	EZG***-CYG	1
11	ROLL PIN	EZG***CRP	2
12	CYLINDER/MOUNT PIN	EZG***-CYM	1
13	CYLINDER MOUNT	EZG***CM	1
14	STOP	EZG***ST	1
15	CYLINDER	*ON BASE END OF CYL	1
16	RBC	EZG***RBC	2
17	SEAL KIT (FOR CYLINDER)	*BASED OFF CYL #	1
18	RIGID ARM MOUNT	EZG***RM	1
19	RIGID ARM	EZG***RA	1
20	RIGID ARM PIN	EZG***-RP	1
21	RIGID ARM LYNCH PIN	EZG***RLP	1
22	INSTRUCTIONS	EZG***INS	1
23	DANGER STICKER	EZGDGSTR	2

*EACH THUMB IS UNIQUE THIS IS USED FOR GENERAL EXPLANATION OF PARTS.
PARTS REPRESENTED HERE MAY NOT BE PART OF YOUR ASSEMBLY