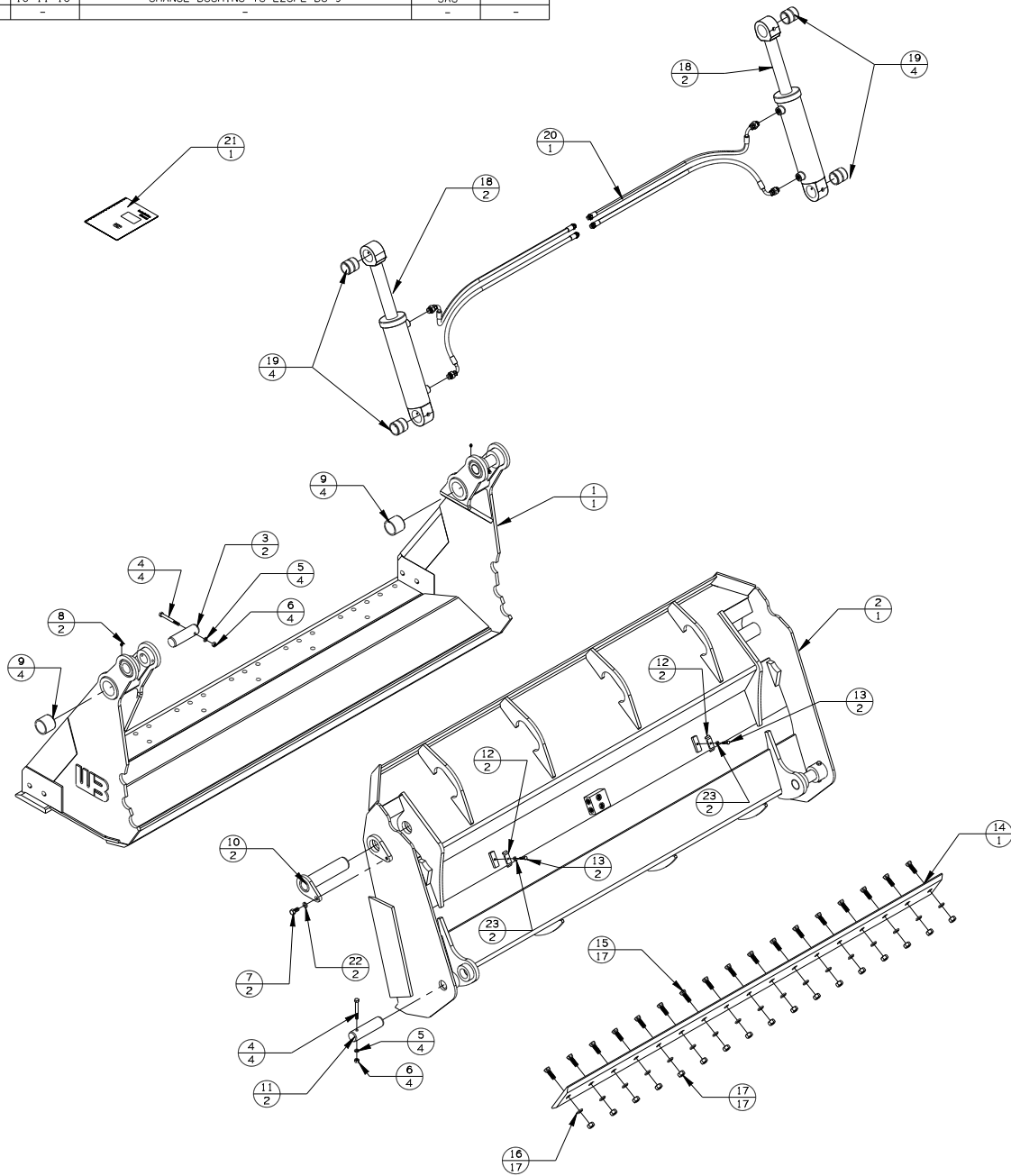


| REV | DATE     | CHANGE DESCRIPTION           | BY  | CHECKED |
|-----|----------|------------------------------|-----|---------|
| A   | 1-28-16  | RELEASED TO PRODUCTION       | JAS | -       |
| B   | 10-11-16 | CHANGE BUSHING TO EZGPL-BU-9 | JAS | -       |
| -   | -        | -                            | -   | -       |



## QB2WL100-PACKLIST-6

| #  | DESCRIPTION        | PART #              | AMT |
|----|--------------------|---------------------|-----|
| 1  | CLAM               | QB2WL100-****-CLAM  | 1   |
| 2  | BLADE              | QB2WL100-***-BLADE  | 1   |
| 3  | PIN                | QBWL-CP-4           | 2   |
| 4  | 1/2-13 UNC X 4     | 13219               | 4   |
| 5  | 1/2 LOCK WASHER    | 33626               | 4   |
| 6  | 1/2-13 UNC NUT     | 36310               | 4   |
| 7  | 5/8-11 UNC X 1 1/4 | 13307               | 2   |
| 8  | GREASE ZERK        | 60102               | 2   |
| 9  | BUSHING            | EZGPL-BU-9 <b>B</b> | 4   |
| 10 | PIN                | QBWL-PP-2           | 2   |
| 11 | PIN                | QBWL-CP-3           | 2   |
| 12 | HOSE CLAMP         | D143846             | 2   |
| 13 | 3/8-16 UNC X 1 1/4 | 13107               | 2   |
| 14 | BOLT ON EDGE       | WBBCE-.75X8-99.50   | 1   |
| 15 | 3/4 X 2 1/4 PLOW   | 22706               | 17  |
| 16 | 3/4 LOCK WASHER    | 33632               | 17  |
| 17 | 3/4-10 UNC NUT     | 36316               | 17  |
| 18 | CYLINDER           | 600-4650            | 1   |
| 19 | BUSHING            | QBWL-BC-2           | 4   |
| 20 | HOSE KIT           | QB2WL100-2.50-6-HK  | 1   |
| 21 | INSTRUCTIONS       | INST-WL QUAD        | 1   |
| 22 | 5/8 LOCK WASHER    | 33630               | 2   |
| 23 | 3/8 LOCK WASHER    | 33622               | 2   |



**WERK-BRAU CO., INC.**  
 2800 FOSTORIA AVE. P.O. BOX 545 FINDLAY, OHIO 45840-0545  
 www.werkbrau.com PHONE: 419-422-2912 FAX: 419-422-7207

INCH 1/X: ± 1/16  
 .X: ± .1  
 .XX: ± .01  
 .XXX: ± .005  
 .XXXX: ± .0005 NOT TO SCALE

METRIC X: ± 1.50  
 X.X: ± 0.80  
 X.XX: ± 0.25  
 ANGLE ± 0.5°

WELD SPEC: WELDS TO CONFORM TO P7.PRO6-WB ARC WELDING QUALITY STANDARD

DATE: 1-28-16

WEIGHT: - Lbs.

MACHINE: -

PART No.: QB2WL100-PACKLIST-6

FILE NAME: QB2WL100-PACKLIST-6.CKD

THIS PRINT AND THE INFORMATION CONTAINED HERE ON IS A CONFIDENTIAL DISCLOSURE, THE SUBJECT MATTER OF WHICH IS THE PROPERTY OF: WERK-BRAU CO., INC.

DRAWN:

**B**  
REVISION

