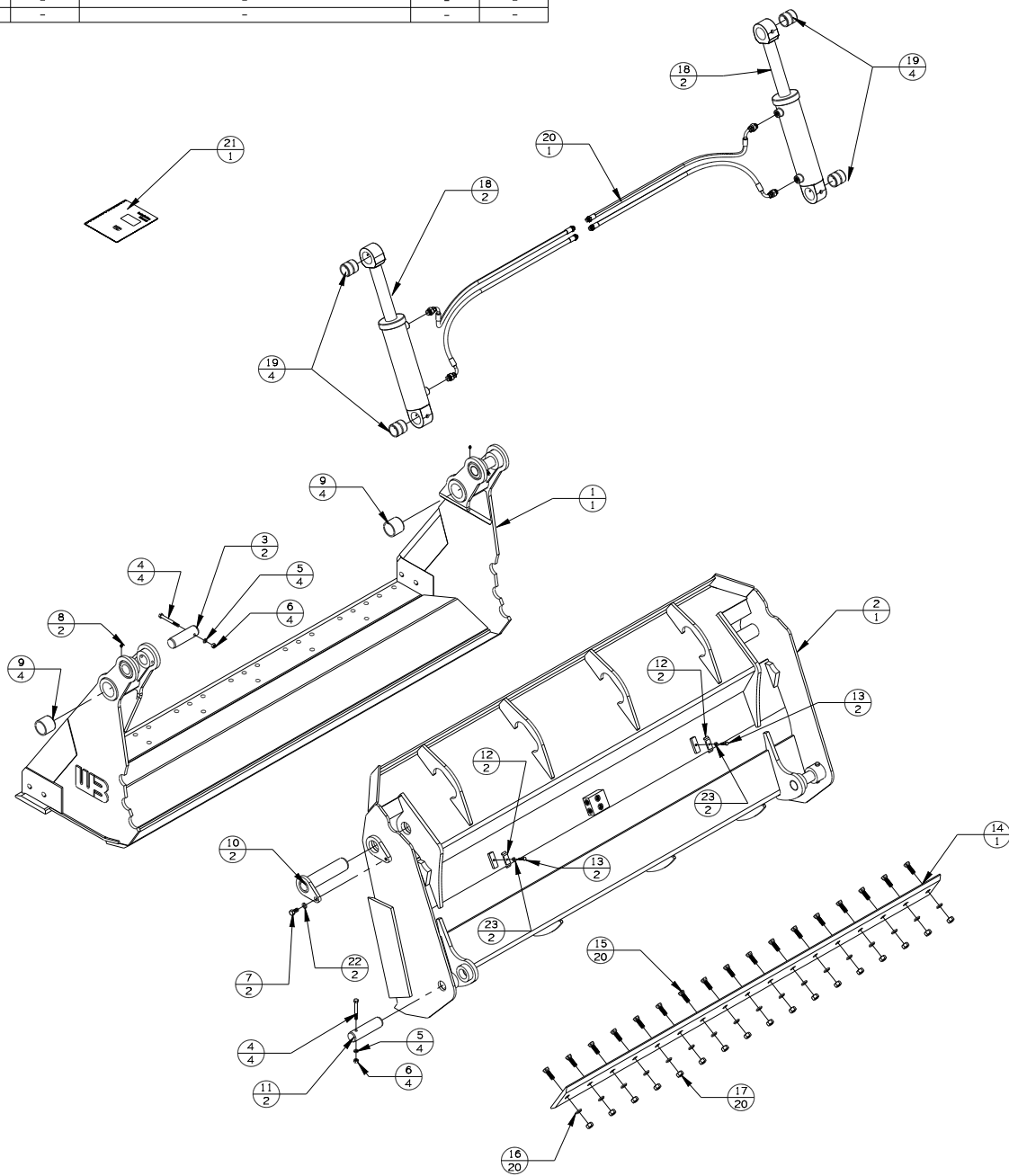


REV	DATE	CHANGE DESCRIPTION	BY	CHECKED
A	3-1-18	RELEASED TO PRODUCTION	JAS	-
-	-	-	-	-
-	-	-	-	-



## QB4WL117-PACKLIST

#	DESCRIPTION	PART #	AMT
1	CLAM	QB4WL117-****-CLAM	1
2	BLADE	QB4WL117-****-BLADE	1
3	PIN	QBWL-CP-4	2
4	1/2-13 UNC X 4	13219	4
5	1/2 LOCK WASHER	33626	4
6	1/2-13 UNC NUT	36310	4
7	5/8-11 UNC X 1 1/4	13307	2
8	GREASE ZERK	60102	2
9	BUSHING	EZGPL-BU-9 (B)	4
10	PIN	QBWL-PP-2	2
11	PIN	QBWL-CP-3	2
12	HOSE CLAMP	D143846	2
13	3/8-16 UNC X 1 1/4	13107	2
14	BOLT ON EDGE	WBBCE-.75X8-116.50	1
15	3/4 X 2 1/4 PLOW	22706	20
16	3/4 LOCK WASHER	33632	20
17	3/4-10 UNC NUT	36316	20
18	CYLINDER	600-4650	1
19	BUSHING	QBWL-BC-2	4
20	HOSE KIT	QB4WL117-HK	1
21	INSTRUCTIONS	INST-WL QUAD	1
22	5/8 LOCK WASHER	33630	2
23	3/8 LOCK WASHER	33622	2



**WERK-BRAU CO., INC.**  
 2800 FOSTORIA AVE. P.O. BOX 545 FINDLAY, OHIO 45840-0545  
 www.werkbrau.com PHONE: 419-422-2912 FAX: 419-422-7207

INCH 1/X: ± 1/16  
 .X: ± .1  
 .XX: ± .01  
 .XXX: ± .005  
 .XXXX: ± .0005 NOT TO SCALE

METRIC X: ± 1.50  
 X.X: ± 0.80  
 X.XX: ± 0.25  
 .XXX: ± .005 ANGLE ± 0.5°

WELD SPEC: WELDS TO CONFORM TO P7.PRO6-WB ARC WELDING QUALITY STANDARD

DATE: 3-1-18

WEIGHT: - Lbs.

MACHINE: -

PART No.: QB4WL117-PACKLIST

FILE NAME: QB4WL117-PACKLIST.CKD

THIS PRINT AND THE INFORMATION CONTAINED HERE ON IS A CONFIDENTIAL DISCLOSURE, THE SUBJECT MATTER OF WHICH IS THE PROPERTY OF: WERK-BRAU CO., INC.

DRAWN:

**A**

