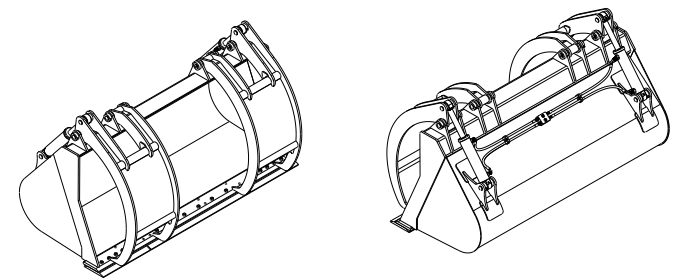
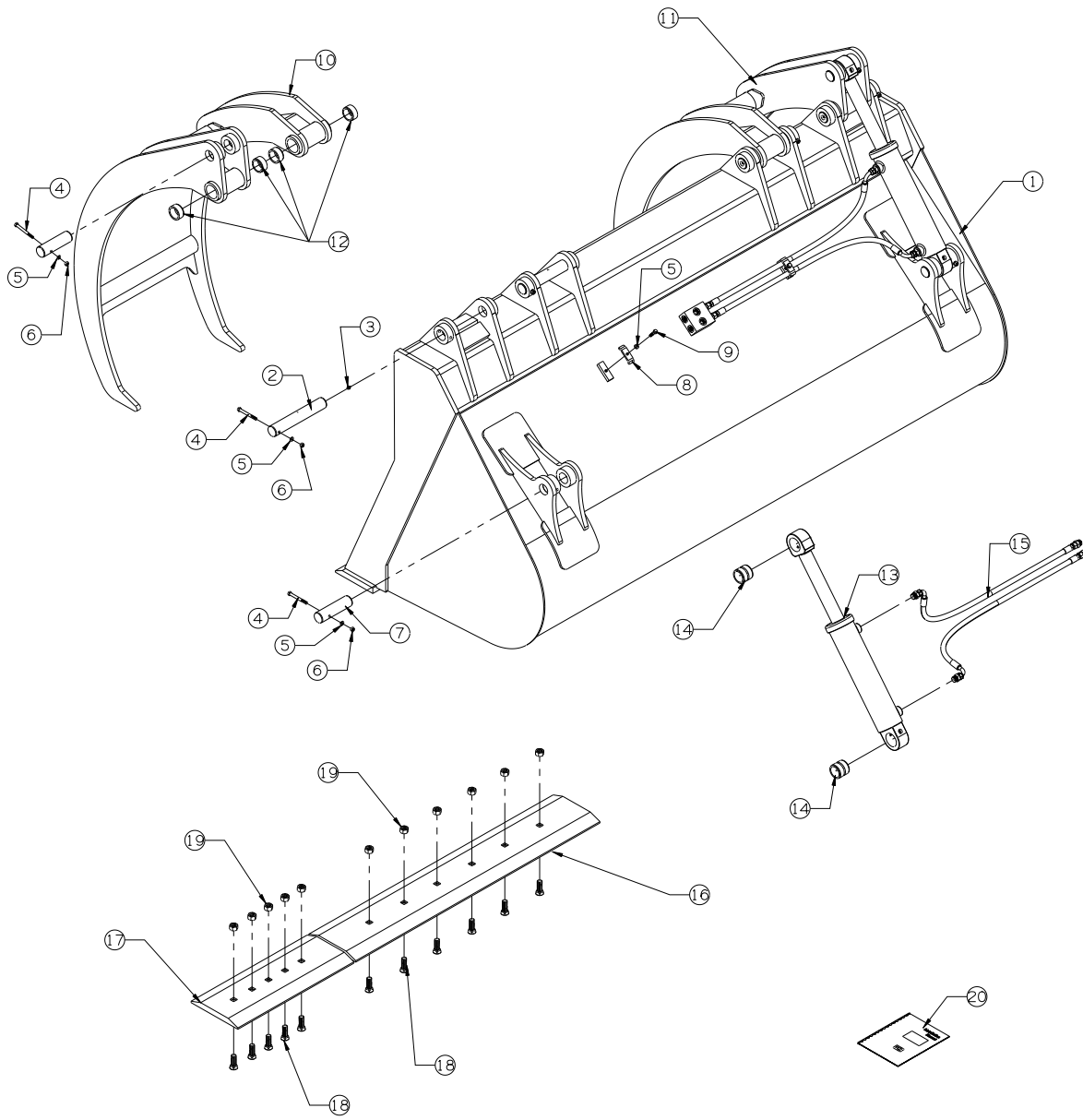


REV	DATE	CHANGE DESCRIPTION	BY	CHECKED
A	3-26-15	RELEASED TO PRODUCTION	JAS	-
B	5-21-15	CHANGE CYLINDER TO 500010146	JAS	-
-	-	-	-	-



WL2GB100-3.00-10

#	DESCRIPTION	PART #	AMT
1	WELDED ASSEMBLY	WL2GB100-3.00-10	1
2	PIVOT PIN	WLGB-PP-1	4
3	GREASE ZERK	60102	4
4	3/8-16 UNC X 3 1/2 BOLT	13117	8
5	3/8 LOCK WASHER	33622	10
6	3/8-16 UNC NUT	36306	8
7	CYLINDER PIN	WLGB-CP-5	2
8	HOSE CLAMP	D143846	2
9	3/8-16 UNC X 1 1/4 BOLT	13107	2
10	RIGHT GRAPPLLE	WL2GB100-3.00-2-GPR	1
11	LEFT GRAPPLLE	WL2GB100-3.00-2-GPL	1
12	PIVOT BUSHING	QBWL-BP-1	8
13	CYLINDER	500010146 (B)	2
14	CYLINDER BUSHINGS	QBWL-BC-4	4
15	HOSE KIT	WL2GB100-HK	1
16	CENTER BOLT ON EDGE	372081A1	1
17	OUTER BOLT ON EDGE	372082A2	2
18	3/4-10 UNC X 2 1/4 PLOW BOLTS	22706	16
19	3/4-10 UNC NUTS	36316	16
20	INSTRUCTIONS	-	1

WB WERK-BRAU CO., INC.
 2800 FOSTORIA AVE. P.O. BOX 545 FINDLAY, OHIO 45840-0545
 www.werkbrau.com PHONE: 419-422-2912 FAX: 419-422-7207

INCH 1/X: ± 1/16
 .X: ± .1
 .XX: ± .01
 .XXX: ± .005
 .XXXX: ± .0005
 METRIC X: ± 1.50
 X.X: ± 0.80
 X.XX: ± 0.25
 ANGLE ± 0.5°
 NOT TO SCALE

WELD SPEC: WELDS TO CONFORM TO P7.PRO6-WB ARC WELDING QUALITY STANDARD DATE: 3-26-15 WEIGHT: - Lbs.
 MACHINE: - PART No.: WL2GB100-3.00-10 FILE NAME: WL2GB100-3.00-10.CKD
 THIS PRINT AND THE INFORMATION CONTAINED HERE ON IS A CONFIDENTIAL DISCLOSURE, THE SUBJECT MATTER OF WHICH IS THE PROPERTY OF: WERK-BRAU CO., INC. DRAWN:

B
 REVISION