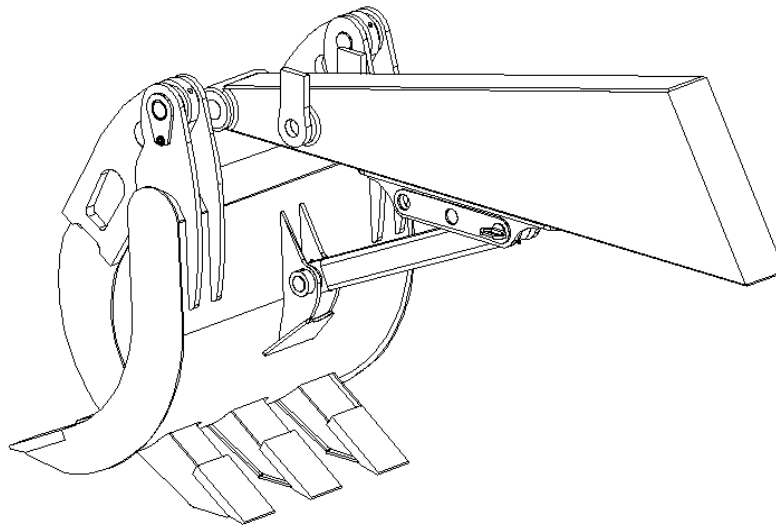


PRODUCT MANUAL & INSTALLATION KIT



Grapple Hydraulic & Rigid



Serial No: _____

Model No: _____

Date Manufactured: _____

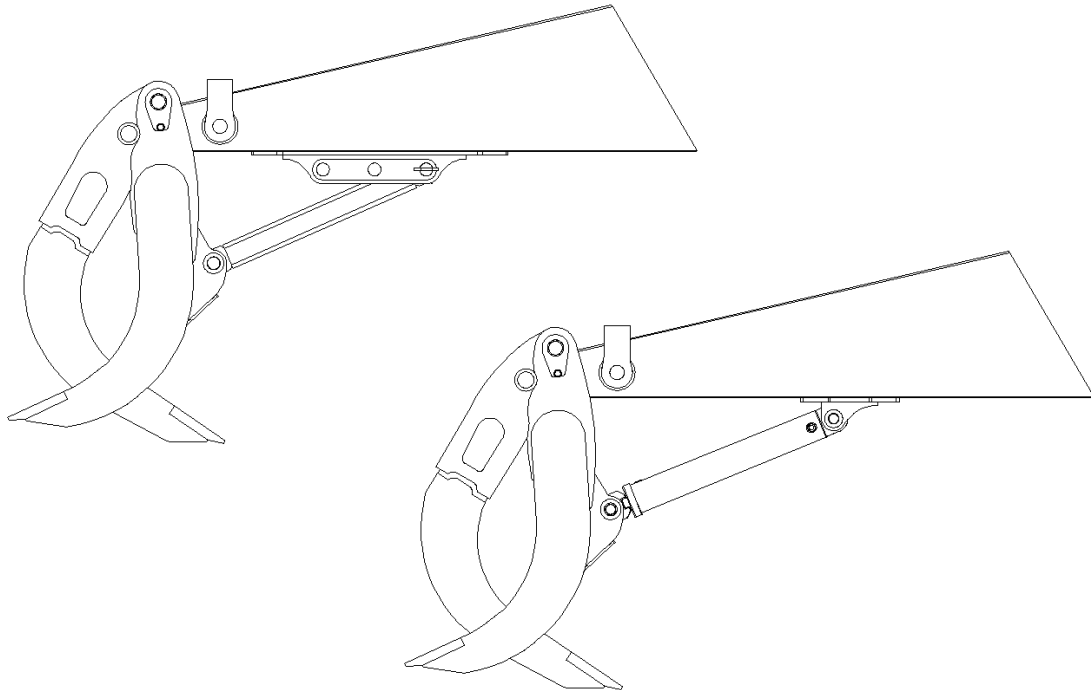
Werk-Brau Co., INC.
2800 Fostoria Road, P.O. Box 545
Findlay, Ohio 45839-0545
Phone 1-800-537-9561/ Fax (419)422-7207

INSTALLATION AND MAINTENANCE INSTRUCTIONS *GRAPPLE*


INTRODUCTION


You have received a high quality, extremely versatile attachment that will increase your backhoe or excavator capability. This product will help you manipulate material and debris. With inspections and proper care, your grapple will last you a long time in a rugged environment.


NOTE: Pictures and diagrams may not be your exact Werk-Brau attachment. The pictures represent an action or a setup required for installation and operation.




SAFETY STATEMENTS

 → Danger tags are used in major hazard situations where an immediate hazard presents a threat of death or serious injury to operator and anyone about.

 → Warning tags are used to represent a hazard level between “Caution” and “Danger”, instead of the required “Caution” tag, provided that they have a signal word of “Warning,” an appropriate major message.


 → Caution tags are used in minor hazard situations where a non-immediate or potential hazard or unsafe practice presents a lesser threat of injury.

 → A notice label is used where equipment or property damage could result if the instructions are not followed properly.






→ This symbol by itself or used with a safety signal word throughout this manual is used to call your attention to instructions involving your personal safety or the safety of others. Failure to follow these instructions can result in injury or death.


GENERAL SAFETY PRECAUTIONS

 **READ MANUAL PRIOR TO INSTALLATION**
Improper installation, operation, or maintenance of this equipment could result in serious injury or death. Operators and maintenance personnel should read this manual as well as all manuals related to this equipment and the operating machine thoroughly before beginning installation, operation, or maintenance. FOLLOW ALL SAFETY INSTRUCTIONS IN THIS MANUAL AND THE OPERATING MACHINES MANUAL.

 **READ AND UNDERSTAND ALL SAFETY STATEMENTS**
Read all safety decals and safety statements in all manuals prior to operating or working on this equipment. Know and obey all OSHA regulations, local laws and other professional guidelines for your operation. Know and follow good work practices when assembling, maintaining, repairing, mounting, removing or operating this equipment.

 **KNOW YOUR EQUIPMENT**
 Know your equipment’s capabilities, dimensions and operations before operating. Visually inspect your equipment before you start, and never operate equipment that is not in proper working order with all safety devices intact. Check all hardware to assure it is tight. Make certain that all locking pins, latches, and connection devices are properly installed and secured. Remove and replace any damaged, fatigued or excessively worn parts. Make certain all safety decals are in place and are legible. Keep decals clean, and replace them if they become worn and hard to read.

 **PROTECT AGAINST FLYING DEBRIS**
Always wear proper safety glasses, goggles with a face shield when driving pins in or out or when any operation causes dust, flying debris, or any other hazardous material.

 **LOWER OR SUPPORT RAISED EQUIPMENT**
Do not work under raised booms without supporting them. Do not use support material made of concrete blocks, logs, buckets, barrels or any other material that could suddenly collapse or shift positions. Make sure support material is solid, not decayed, warped, twisted, or tapered. Lower the boom(s) to ground level or onto block(s). Lower the boom(s) and attachment(s) to the ground before leaving the cab or operator’s station.

GENERAL SAFETY PRECAUTIONS - CONTINUED

⚠ WARNING

USE CARE WITH HYDRAULIC FLUID PRESSURE

Hydraulic fluid under pressure can penetrate the skin and cause serious injury or death. Hydraulic leaks under pressure may not be visible. Before connecting or disconnecting hydraulic hoses, read your operating machines operator's manual for detailed instructions on connecting and disconnecting hydraulic hoses or fittings.

- Keep unprotected body parts, such as face, eyes, and arms as far away as possible from a suspected leak. Flesh injected with hydraulic fluid may develop gangrene or other permanent disabilities. Wear safety glasses, protective clothing, and use a sound piece of cardboard or wood when searching for hydraulic leaks. **DO NOT USE YOUR HANDS!**
- If injured by injected fluid, see a doctor at once. If your doctor is not familiar with this type of injury, ask him to research immediately to determine proper treatment.

⚠ WARNING

DO NOT MODIFY MACHINE OR ATTACHMENTS

Modifications may weaken the integrity of the attachment and may impair the function, safety, life and performance of the attachment. When making repairs, use only the manufacturer's genuine parts, following authorized instructions. Other parts may be substandard in fit and quality. For loaders, never modify any ROPS (Roll Over Protection System) equipment or device.

!!!Any modifications must be authorized in writing by the Werk-Brau or the manufacturer!!!

⚠ DANGER

SAFELY OPERATE EQUIPMENT

NOTICE

Do not operate equipment until you are completely trained by a qualified operator in how to use the controls, know its capabilities, dimensions, and all safety requirements. See your operating machines manual for these instructions.

- Keep all step plates, grab bars, pedals, and controls free of dirt, grease, debris, and oil.
- Be sure that all bystanders are out of harms way when operating.
- Do not allow riders on the attachment or operating machine
- Do not operate the equipment from anywhere other than the correct operators position.
- Never leave equipment unattended with the engine running or with this attachment in a raised position.
- Do not alter or remove any safety feature from the operating machine or this attachment.
- Know your work site safety rules as well as traffic rules and flow. When in doubt on any safety issue, contact your supervisor or safety coordinator for an explanation.

SAFELY MAINTAIN AND REPAIR EQUIPMENT



- Do not wear loose clothing, or any accessories that can catch in moving parts. If you have long hair, cover or secure it so that it does not become entangled in the equipment.
- Work on a level surface in a well-lit area.
- Use properly grounded electrical outlets and tools.
- Use the correct tool for the job at hand. Make sure tools are in good condition.
- Wear all protective equipment specified by the tool manufacturer.

OPERATING PRECAUTIONS



DO NOT IMPROPERLY USE GRIP

This EZG is designed to grab objects and debris and not for any other use.



BE AWARE OF SURROUNDING UTILITIES



Operator must be aware of all utility line and overhead electrical lines. Operations must be able to clear all lines safely.



BE AWARE OF OVERHEAD DANGER

Operator must be aware of all possible overhead dangers that are within the range of motion of the operating machine.



DO NOT OPERATE WITH A LOOSE ATTACHMENT

Visually check the coupler to verify attachments are secure and lock is fully engaged and that the center to center of the attachment matches the up with the coupler.



PINCH POINTS

Personal injury could result from the careless misuse of this coupler. Keep hands and body parts clear of the coupler when it's in the process of hooking up to an attachment. Be sure the machine is off and the attachment is on the ground prior to making adjustments.

INSTALLATION

1. Remove the Grapple from the shipping skid and position it in front of the excavator so that the fixed side of the Grapple is toward the operator.
2. Figures 1 and 2 on the following pages should be used to set the mount on the stick. Use Figure 1 for the hydraulic option and mini grapples: Figure 2 for EXC full sizes rigid option.
3. Operator preference or application may warrant a change of this position. Install the arm to the Grapple and mount plate with the pins provided – retain with the retainers supplied.
4. Hold the mount bracket tight against the stick and tack weld in place.
5. Once tacked in place “test” the grapple taking it through its rotation to be sure the mount location suits your needs.
6. Upon approval weld the mount bracket to the stick with a low hydrogen rod according to Figures 1 and 2. Be sure to clean the weld area before welding.

 All welding must be done by a Certified Welder!

Dipper Mounting Bracket

- a.) Disconnect battery before welding.
 - b.) Use a low hydrogen electrode.
 - c.) Clean weld area – weld completely around bracket.
 - d.) Weld ½” fillet on the sides of the bracket to the stick.
7. Paint the welded area to complete the installation. Grease all fittings

If you received a hydraulic grapple you can now install the hydraulics. If the system was purchased from Werk-Brau, a hydraulic installation supplement will follow. If you are using an auxiliary hydraulic system supplied by the machine’s manufacturer, follow their instructions carefully. Remember to limit the working pressure to a maximum of 2500 P.S.I.

HYDRAULIC INSTALLATION **!!DOUBLE CHECK!!**

Be sure to, double check that all hydraulic lines and fittings are tight and secure before starting the machine.

 → In the event of a hydraulic problem or failure, discontinue the use of the attachment immediately!!

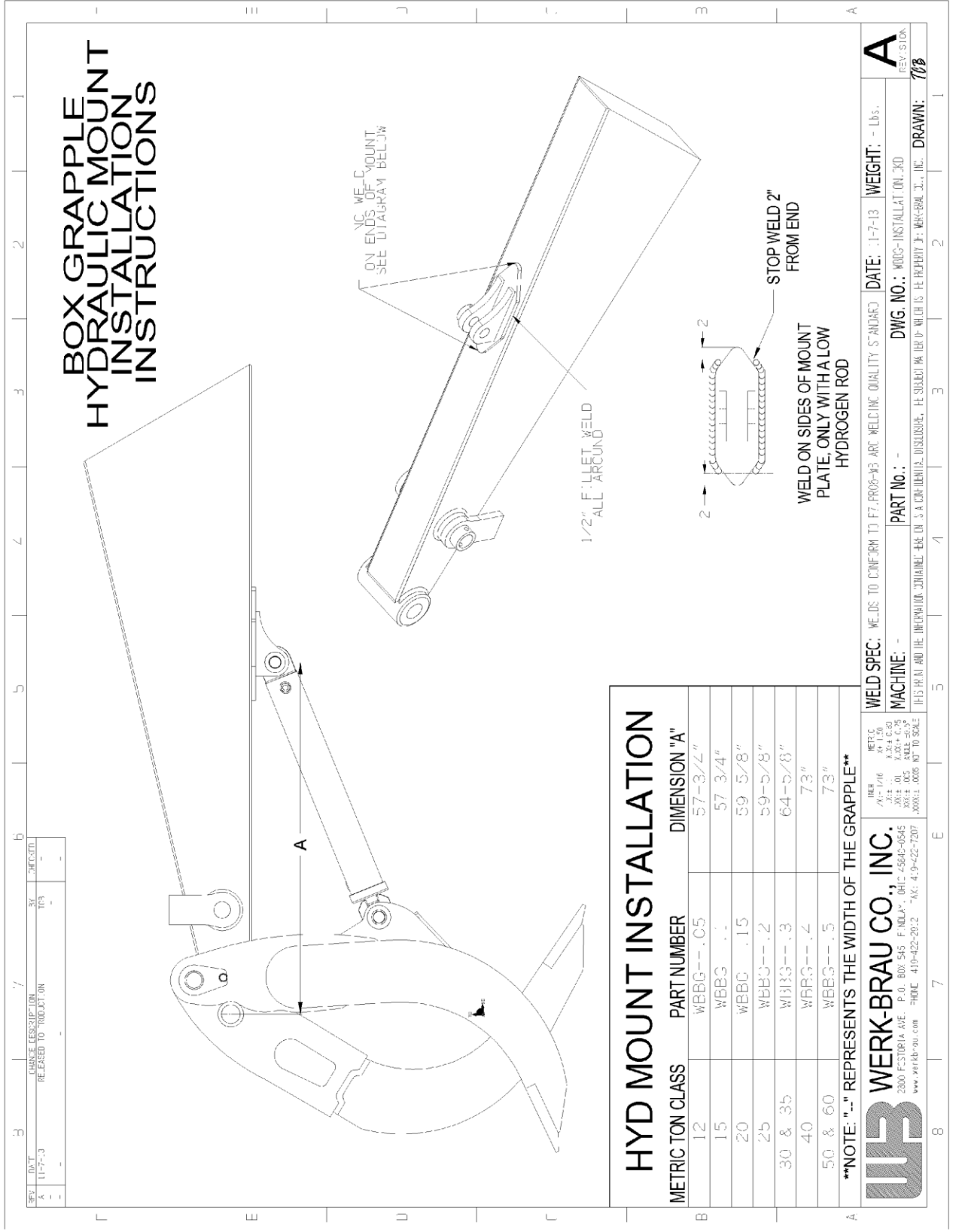
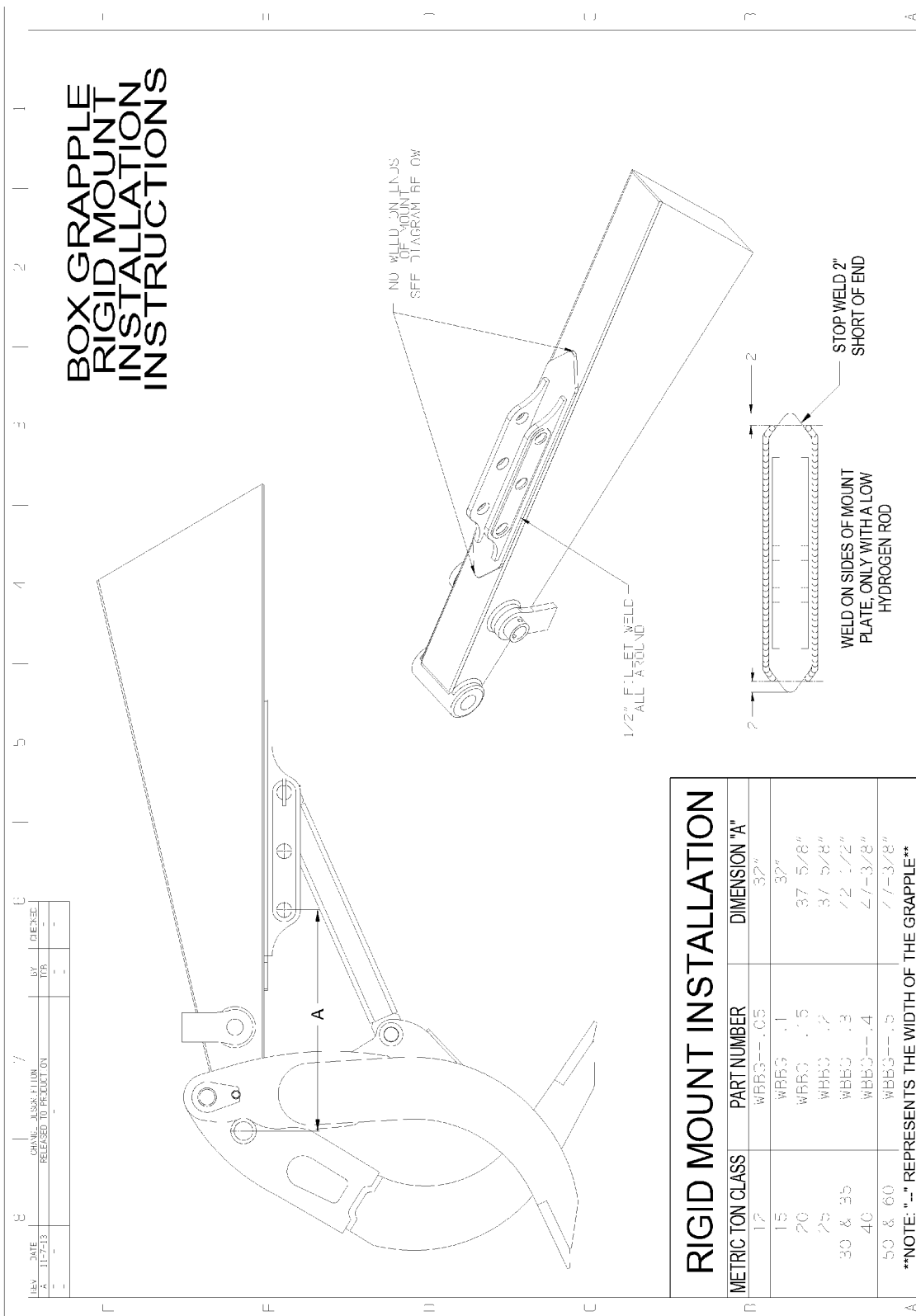


Figure 1: Hydraulic Mount Instructions



**BOX GRAPPLE
RIGID MOUNT
INSTALLATION
INSTRUCTIONS**

NO WELD ON LIPS
OF RIGID MOUNT
SEE DIAGRAM REF DWG

1/2" FILL-LET WELD
ALL AROUND

WELD ON SIDES OF MOUNT
PLATE, ONLY WITH A LOW
HYDROGEN ROD

STOP WELD 2"
SHORT OF END

METRIC TON CLASS	PART NUMBER	DIMENSION "A"
15	WBB3--.05	32"
20	WBB3 .1	32"
25	WBB3 .15	37 5/8"
30 & 35	WBB3 .2	37 5/8"
40	WBB3 .3	42 1/2"
50 & 60	WBB3--.4	47-3/8"
	WBB3--.5	57-3/8"

****NOTE: "--" REPRESENTS THE WIDTH OF THE GRAPPLE****

WB WERK-BRAU CO., INC.
 2600 FOSTORIA AVE. TOL. 300-545 FENOLA, OH 43024-0545
 WWW.WER-BRAU.COM PHONE 419-422-2512 FAX 419-422-7207

WELD SPEC: WELDS TO CONFORM TO P7.P008-V5 ARC WELDING QUALITY STANDARD
 MACHINE: --
 PART No.: --
 DWG. NO.: WBB3-INSTAL ATCN.300
 DATE: 11-7-13 WEIGHT: -- LBS.
 REVISION: **A**
 DRAWN: 703

Figure 2: Rigid Mount Instructions

MAINTENANCE

The list below should be followed in order to lengthen the life of your WERK-BRAU product.

PROCEDURE	INTERVAL	NOTE
GREASE FITTINGS	DAILY	
CHECK FOR HYDRAULIC LEAKS	DAILY	
INSPECT GRAPPLE ASSEMBLY FOR DAMAGE	DAILY	

TROUBLE SHOOTING

1-800-537-9561

Ask for Installation Assistance

Monday through Friday - 8:00 a.m. to 5:00 p.m. EST

Revision Record (Original is revision 1)

Revision	Date	#	Description
B	2/3/11	7	Removed PBD and Cert Welder note
C	11-7-13	8	Added Instruction Diagram and Designed Specifically for Box Grapple.
D	5/20/16	6	Updated 3 position info

