

EZRGEX-1-TC (HYDRAULIC & RIGID)



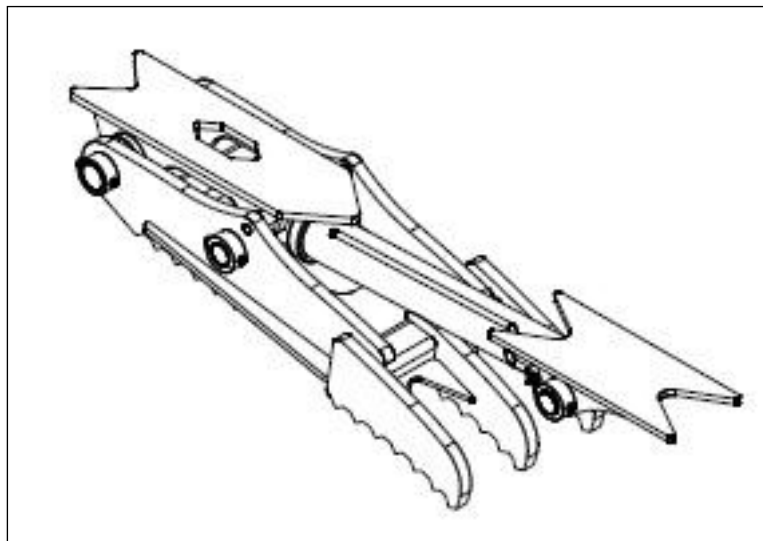
1-800-537-9561

Werk-Brau Co., INC

2800 Fostoria RD
PO Box 545
Findlay, Ohio
45839

Ph: 1-800-537-9561
Fax: 419-422-7207

www.Werk-Brau.com



Please take the time to record the information listed below.

Serial No.: _____

Model No.: _____

Date Manufactured: _____

Thank You For Your Purchase

You have received a high quality, extremely versatile attachment that will increase your machine's capability. This product will help you manipulate material and debris. With inspections and proper care your EZG will last you a long time in a rugged environment. Instructions for both the hydraulic and rigid versions have been included in this manual.

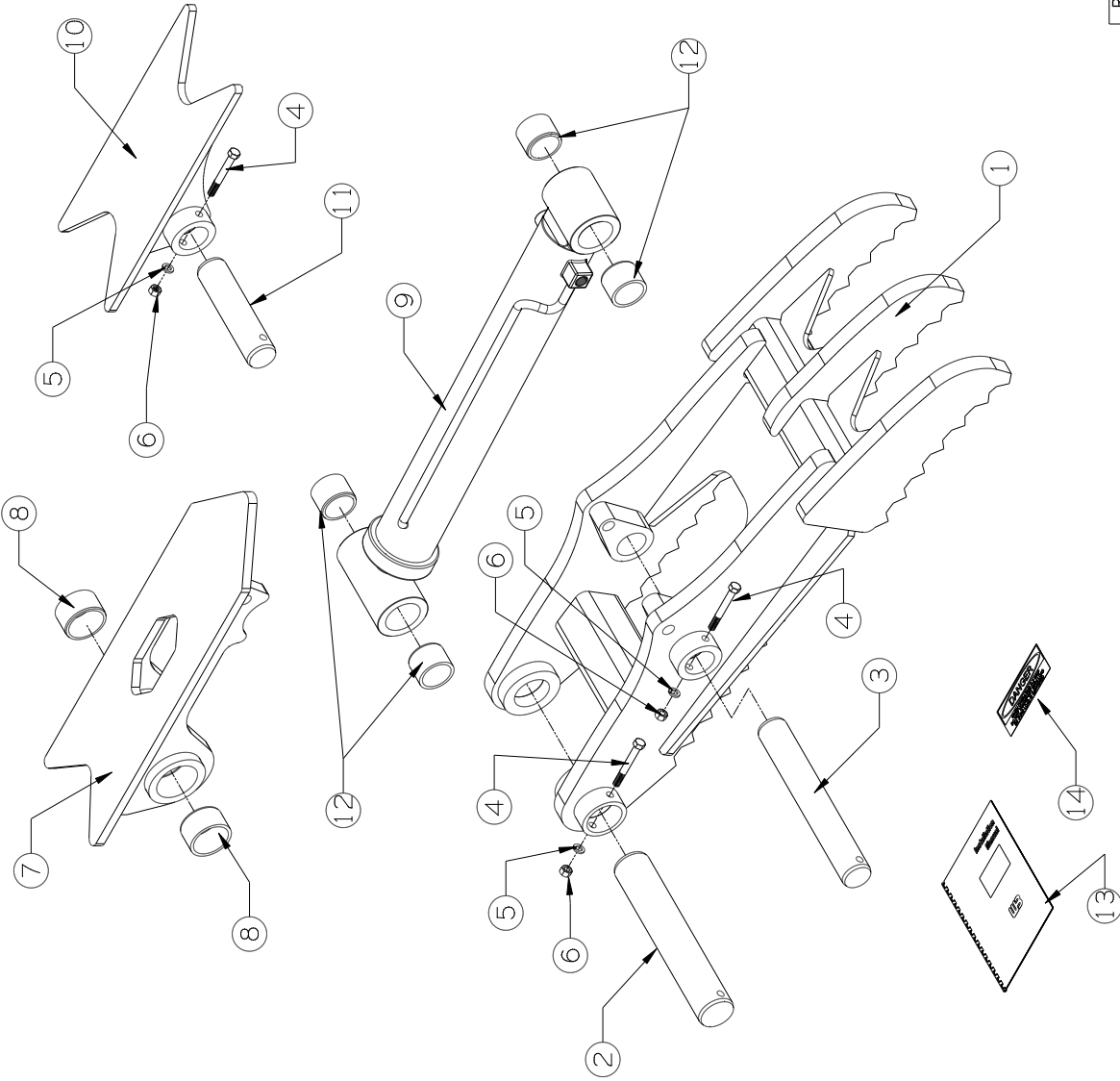
Warranty Info

To read the complete and most current version of Werk-Brau's Warranty Policy, and or to file a claim at any time please visit the Werk-Brau website.

Policy Online: <http://www.Werk-Brau.com/warranty-claims>

Claim Form Online: <http://www.Werk-Brau.com/warranty-claims/form>

REV	DATE	CHANGE DESCRIPTION	BY	CHECKED
A	3-24-11	RELEASE FOR PRODUCTION	.	.
.
.
.
.
.
.



EZRGEX1-TC-H-PACKLIST

#	DESCRIPTION	PART #	AMT
1	WELDED ASSEMBLY	EZRGEX1-TC-**-	1
2	PIVOT PIN	EZRGF11-24-07	1
3	ARM/GRIP PIN	EZRGF11-4-TC-13	1
4	1/2-13 UNC X 4 BOLT	13219	3
5	1/2 LOCK WASHER	33626	3
6	1/2-13 UNC NUT	36310	3
7	PIVOT MOUNT	EZRGEX1-TC-PMT	1
	ZERKS INSTALLED	Y/N	1
8	PIVOT BUSHINGS	EZRGF11-4-TC-15	2
9	CYLINDER	600-5218	1
	ZERKS INSTALLED	Y/N	2
10	CYLINDER MOUNT	EZRGEX1-TC-CMT	1
11	CYLINDER PIN	EZRGEX1-TC-19	1
12	CYLINDER BUSHING	EZRGF11-4-TC-16	4
13	INSTRUCTIONS	-	1
14	DANGER STICKER	-	2

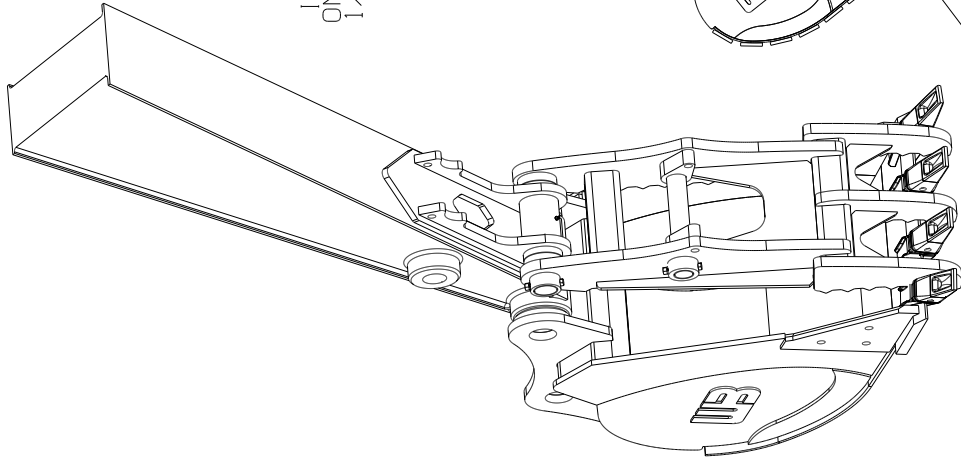
REV.# A

***SPECIFIES TIP RADIUS

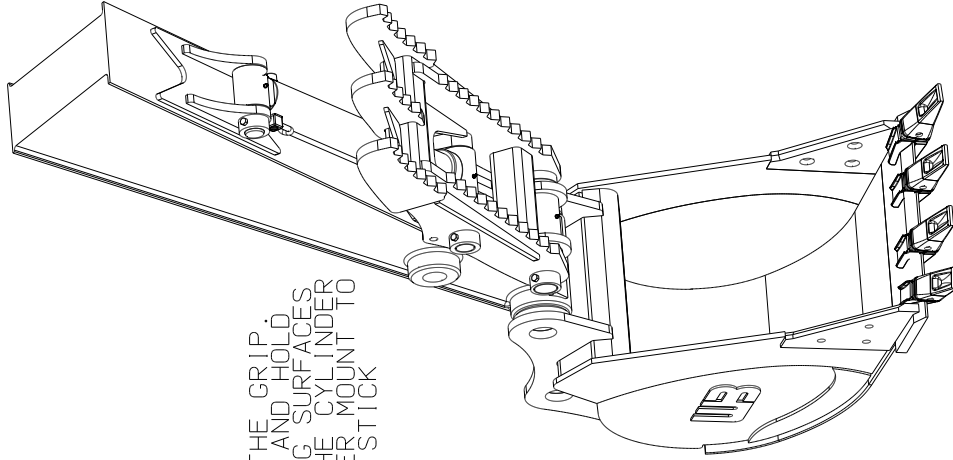
MACHINE: -	DWG. NO.: EZRGEX1-TC-H-PACKLIST.CKD	DRAWN: gAS
PART No.: EZRGEX1-TC-H-PACKLIST	DATE: 3-24-11	ORDER No/S.N.: -----1-1
THIS PRINT AND THE INFORMATION CONTAINED HERE ON IS A CONFIDENTIAL DISCLOSURE, THE SUBJECT MATTER OF WHICH IS THE PROPERTY OF: WERK-BRAU CO., INC.		

**WERK-BRAU CO., INC.**
2800 FOSTORIA AVE. P.O. BOX 545 FINDLAY, OHIO 45840-0545
www.werkbrau.com PHONE: 419-422-2912 FAX: 419-422-7207

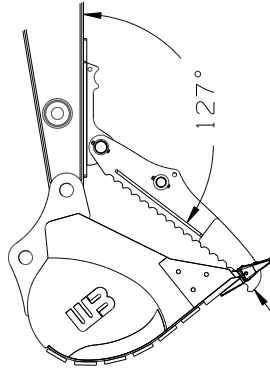
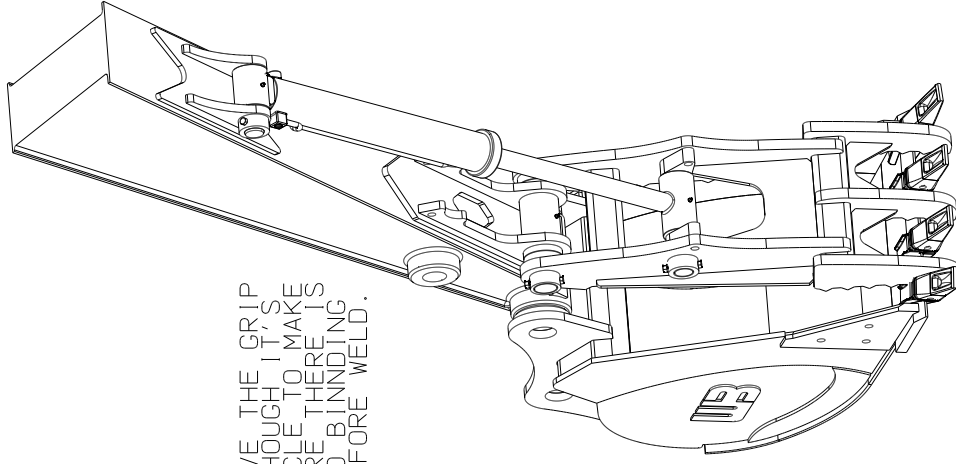
EZRGEX1-TC HYDRAULIC INSTALLATION INSTRUCTIONS



PIN THE CYLINDER TO THE GRIP.
ROTATE THE GRIP BACK AND HOLD
IT AGAINST THE STOPPING SURFACES
ON THE MOUNT. EXTEND THE CYLINDER
1/4 in. TACK THE CYLINDER MOUNT TO
THE BOTTOM OF THE STICK.



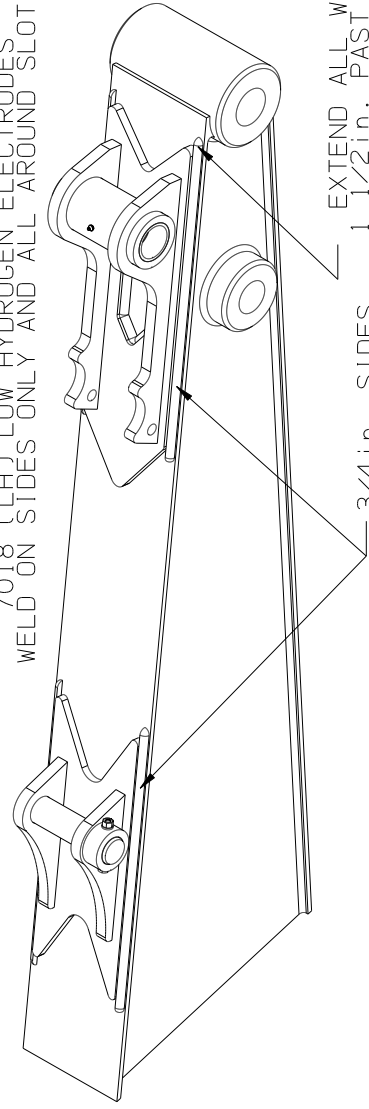
MOVE THE GRIP
THOUGH IT'S
CYCLE TO MAKE
SURE THERE IS
NO BINDING
BEFORE WELD.



BUCKET OR TEETH
ARE NOT TO HIT
NOSE AREA

DISCONNECT BATTERY BEFORE USING
WELDER ON MACHINE. TACK MOUNT
TO BOTTOM OF STICK. ROTATE GRIP
APPROXIMATELY 127° TO INSURE
THE BUCKET DOES NOT HIT THE
NOSE AREA OF THE TINES. ADJUST
AS NECESSARY

WELD 3/4 in. SOLID WELD WITH
7018 (LH) LOW HYDROGEN ELECTRODES
WELD ON SIDES ONLY AND ALL AROUND SLOTS



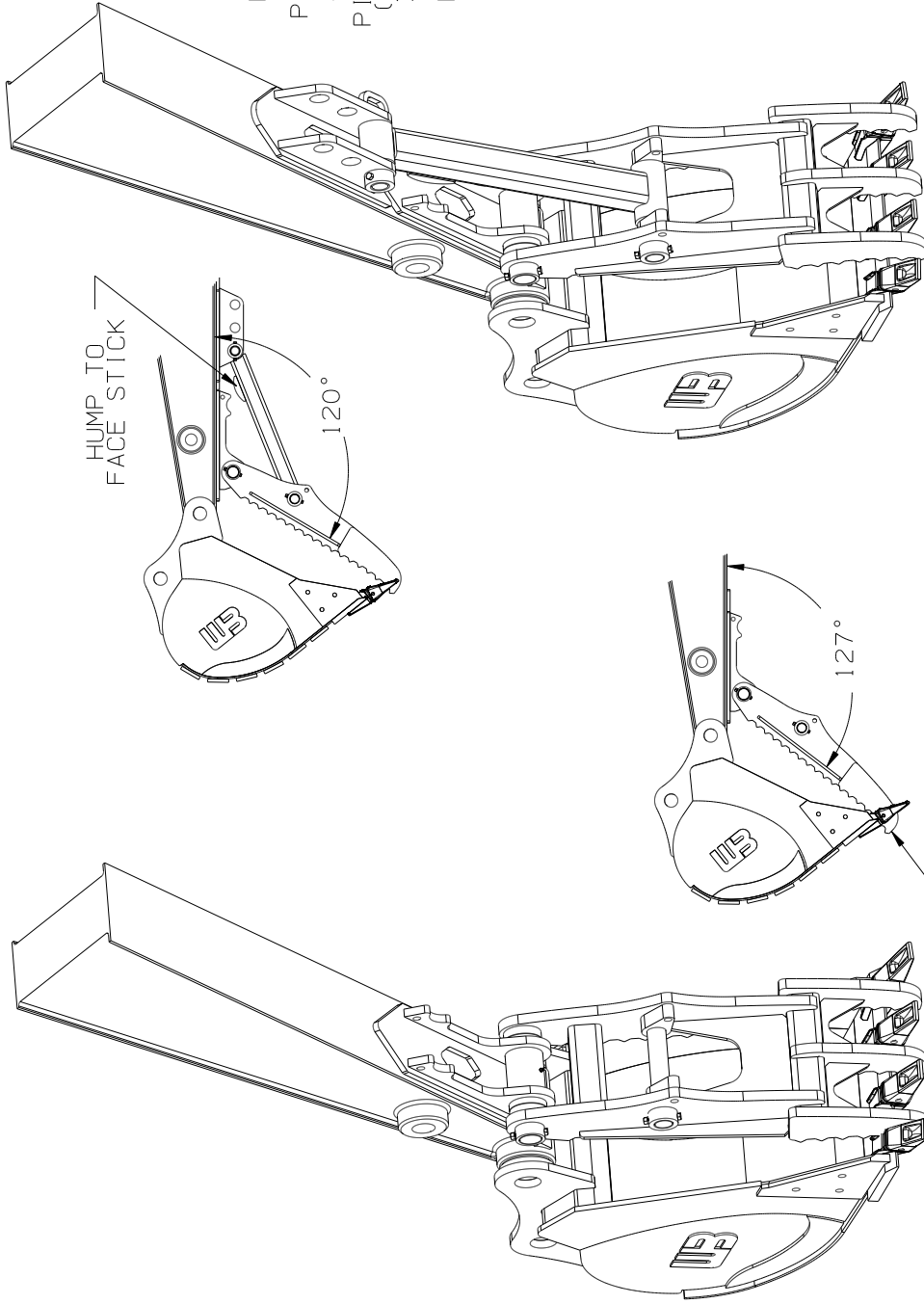
3/4 in. SIDES

EXTEND ALL WELDS
1 1/2 in. PAST PLATE

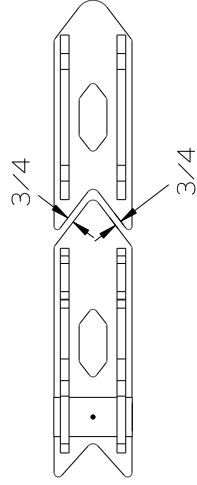
WERK-BRAU CO., INC.

2800 FOSTORIA AVE. P.O. BOX 545 FINDLAY, OHIO 45840-0545
www.werkbrau.com PHONE: 419-422-2912 FAX: 419-422-7207

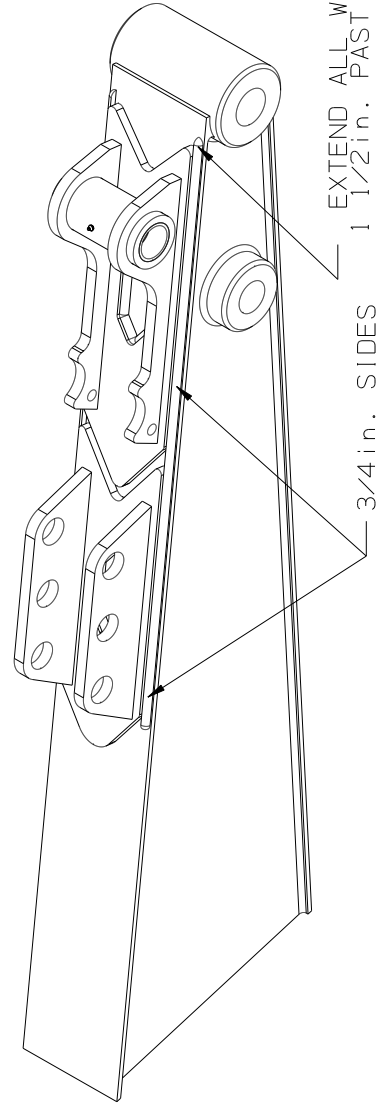
EZRGEX1-TC RIGID INSTALLATION INSTRUCTIONS



PIN THE RIGID ARM TO THE GRIP WITH BUMP FACING THE STICK. PIN THE RIGID ARM TO THE MOUNT. PLACE THE MOUNT TO THE STICK WITH A 3/4 in. GAP BETWEEN THE PIVOT MOUNT AND THE RIGID MOUNT. (GRIP SHOULD BE APPROXIMATELY 120°). TACK THE MOUNT IN PLACE SET GRIP IN ALL POSITIONS TO MAKE SURE THERE IS NO BINDING BEFORE WELD.



WELD 3/4 in. SOLID WELD WITH 7018 (LH) LOW HYDROGEN ELECTRODES WELD ON SIDES ONLY AND ALL AROUND SLOTS



EXTEND ALL WELDS 1 1/2 in. PAST PLATE

DISCONNECT BATTERY BEFORE USING WELDER ON MACHINE. TACK MOUNT TO BOTTOM OF STICK. ROTATE GRIP APPROXIMATELY 127° TO INSURE THE BUCKET DOES NOT HIT THE NOSE AREA OF THE TINES. ADJUST AS NECESSARY

WERK-BRAU CO., INC.
2800 FOSTORIA AVE. P.O. BOX 545 FINDLAY, OHIO 45840-0545
www.werkbrau.com PHONE: 419-422-2912 FAX: 419-422-7207

EZRGEX-1-TC

(HYDRAULIC & RIGID)

Werk-Brau Co. INC.,
2800 Fostoria Rd
P.O. Box 545
Findlay, Ohio
45839

For replacement parts, questions, and other matters please call your local dealer. If you can not reach a local dealer please call us and we will be happy to find a dealer for you and answer any questions.

PHONE:
1-800-537-9561

FAX:
(419) 422-7207

WEBSITE:
www.Werk-Brau.com

Engage with us!



Facebook & LinkedIn

ABOUT WERK-BRAU

Since 1947, Werk-Brau has manufactured the highest quality and most innovative specialty products for the heavy equipment industry. Werk-Brau is respected internationally for providing outstanding customer service and being dedicated to excellence in all aspects of our business. Duke Werkheiser and Dutch Brautigan, for whom the company is named after, first opened their blacksmith shop in Findlay Ohio. Still today Werk-Brau manufactures and produces in Findlay Ohio, in a state of the art facility.

Over the decades Werk-Brau has grown and become so much more than a simple blacksmith operation. Today Werk-Brau proudly employs an industry leading team of professionals who work hard to follow the vision set by the founders of Werk-Brau to "Provide Excellence in Customer Service". As a modern company Werk-Brau is efficient, high-tech, dedicated to its customers, and deeply proud of the quality of products manufactured.

Werk-Brau manufactures a complete line of O.E.M. and replacement attachments for excavators, mini excavators, backhoes, skid steers, mini and full size loaders and crawler loaders. All over the world Werk-Brau attachments can be found hard at work in the toughest of conditions.

Made in America Since 1947!

THANK YOU FOR YOUR PURCHASE!

WORK SAFE!

