

# **BUCKETS TOUGH JOBS DEMAND TOUGH ATTACHMENTS**

Werk-Brau manufactures the highest quality, most innovative, and longest lasting attachments for Excavators, Compact Utilities, Backhoes, & Wheel Loaders. American made, means American made: Each and every attachment is made in one of our North American manufacturing facilities using only the highest quality steel



**WERK-BRAU  
Co., Inc.**

2800 FOSTORIA AVE.  
FINDLAY, OH 45840

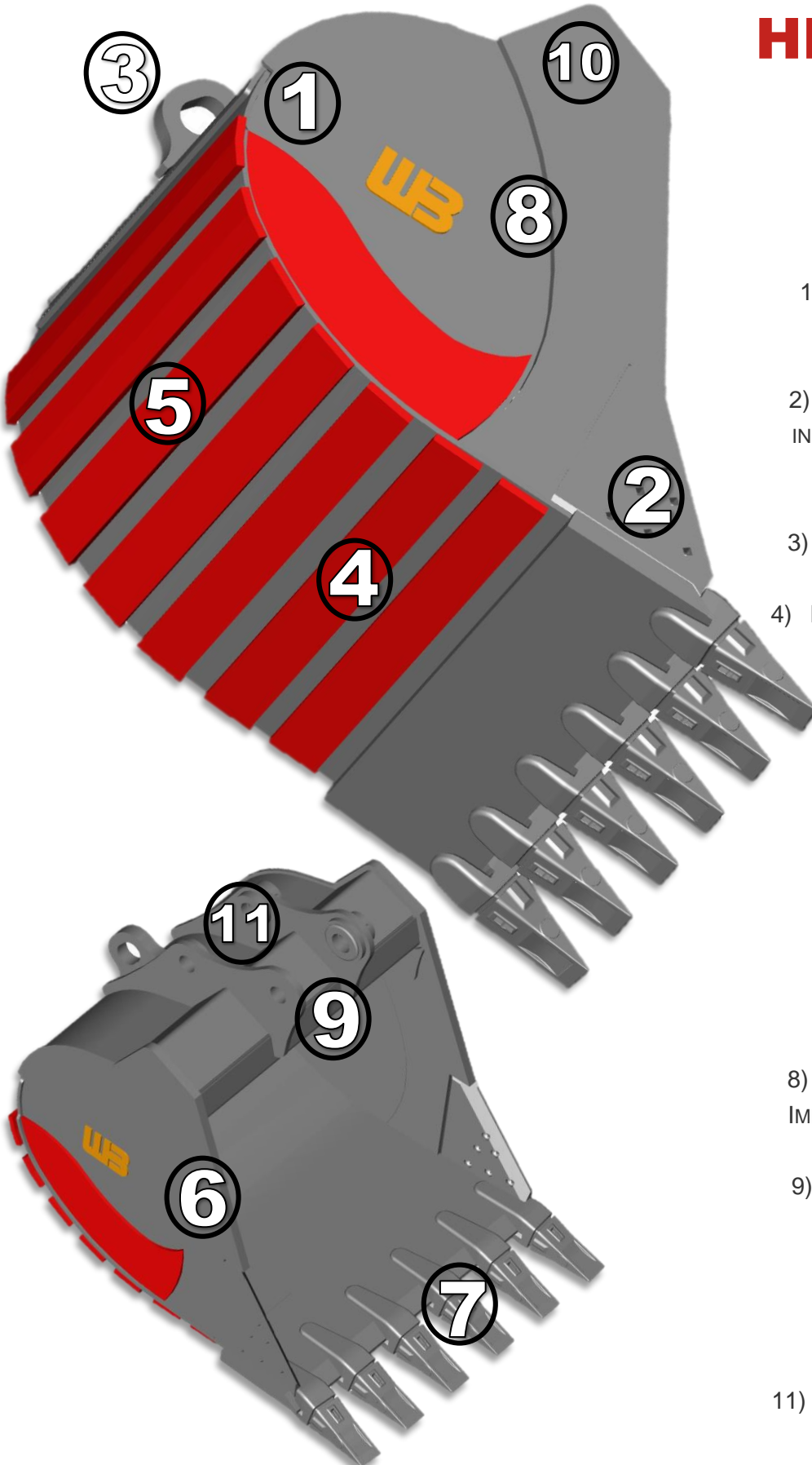
[WWW.WERK-BRAU.COM](http://WWW.WERK-BRAU.COM)

***YOUR PARTNER IN  
PRODUCTION***

# HEAVY DUTY BUCKET

## STANDARD FEATURES:

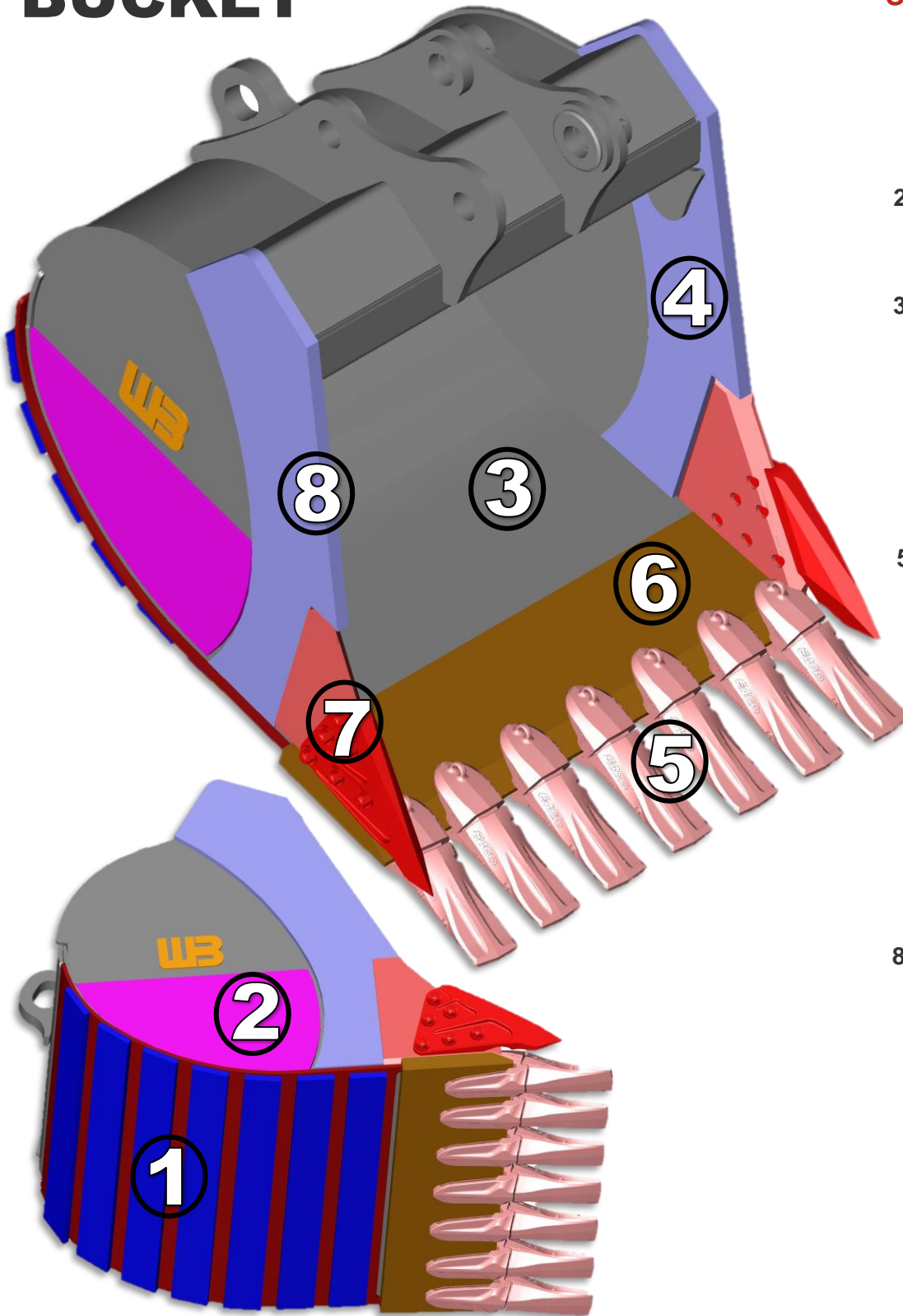
- 1) DUAL TAPER / DUAL RADIUS FOR MORE EFFICIENT CLEANOUT & FILL
- 2) 2 PIECE CUTTER BIT DRILLED FOR INDUSTRY STANDARD SIDE CUTTER(S) & REPLACEABLE.
- 3) HEAVY DUTY LIFT EYE STANDARD
- 4) FLAT BOTTOM DESIGN ALLOWS FOR EASIER LOAD, UNLOAD, & BACKFILL
- 5) HEAVY DUTY HORIZONTAL WEAR STRAPS 50% THICKER THAN COMPETITION
- 6) T-1 STEEL USED IN ALL HIGH WEAR SURFACES
- 7) \*STANDARD HEAVY DUTY TEETH INSTALLED
- 8) HIGHER QUALITY THAN STANDARD IMPORTED BUCKETS & ATTACHMENTS
- 9) HIGH STRENGTH, HEAVY DUTY, & DURABLE TOP CHANNEL
- 10) MANUFACTURED TO OEM ENGINEERING SPECIFICATIONS
- 11) DURABLE STACKED BOSSES; MORE DURABLE THAN THROUGH BOSSES



*\*Werk-Brau offers a wide variety of excavating teeth assemblies for install*

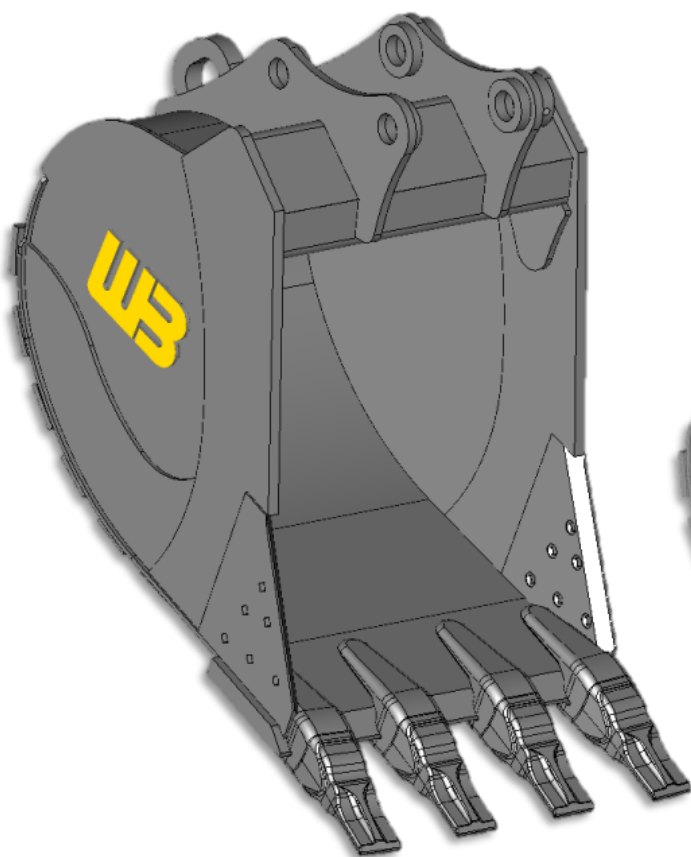
# SEVERE DUTY

## BUCKET



### STANDARD FEATURES:

- 1) HIGH STRENGTH DOUBLE WEAR PLATE & HEAVY DUTY WEAR STRAPS
- 2) HIGH STRENGTH T-1 STEEL USED IN ALL CRITICAL AREAS
- 3) AVERAGE 15-20% HEAVIER THAN STANDARD HEAVY DUTY BUCKET
- 4) OVERSIZED SIDE WEAR PLATE INSTALLED
- 5) INCREASE TOOTH SIZE FOR DURABILITY
- 6) INCREASED THICKNESS ON BASE WELD-ON EDGE
- 7) INCREASED SIDE CUTTER THICKNESS & PRE-DRILLED FOR OPTIONAL BOLT ON SIDE CUTTERS
- 8) ADDITIONAL WELD-ON SIDE WEAR PROTECTORS AVAILABLE

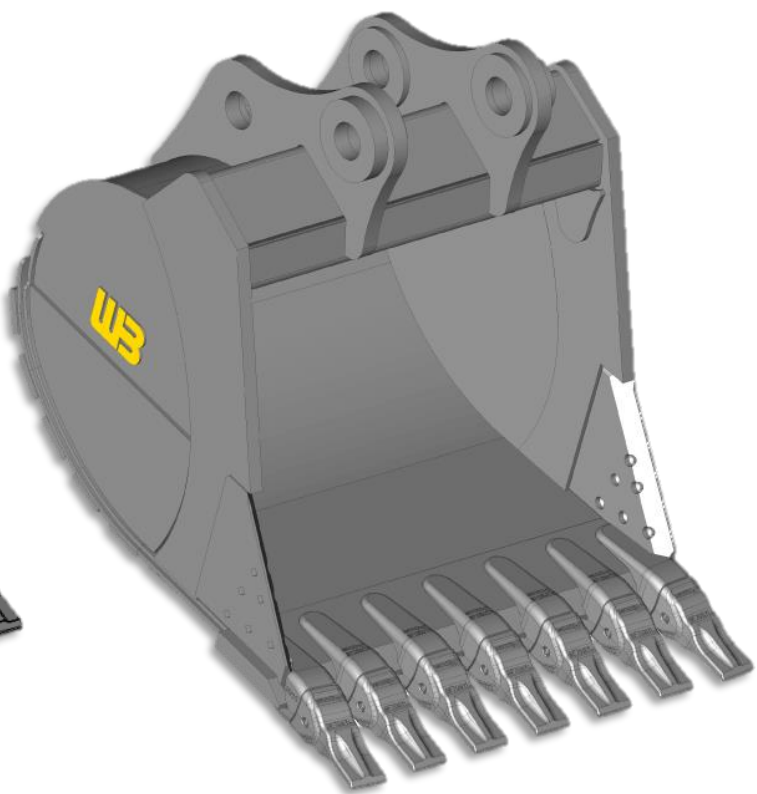


**HEAVY DUTY** can be seen as the most popular excavator bucket style. This bucket is typically chosen where applications conditions are not well known.

For a wide range of impact and abrasion conditions including (but not limited to): mixed dirt, clay, and rock.

Heavy Duty buckets are recommended for trenching in utilities work, and for the general contractor working in a variety of different situations.

- Thicker bottom & side wear plates for more durability
- Bucket is pre-drilled for optional side cutters, and in many cases, shroud protectors
- Wide range of tooth & shank assemblies readily available for install



**SEVERE DUTY** buckets are used in higher abrasive conditions, such as well shot and caliche.

- Bottom wear plates are about 50% thicker than Heavy Duty Buckets
- Side wear plates are about 40% larger than Heavy Duty Buckets for added protections against abrasion and gouging wear
- Adapters and teeth are sized to accommodate higher loads and abrasion conditions
- Wide range of tooth & shank assemblies readily available for install
- Buckets is pre-drilled for optional side cutters and shroud protection





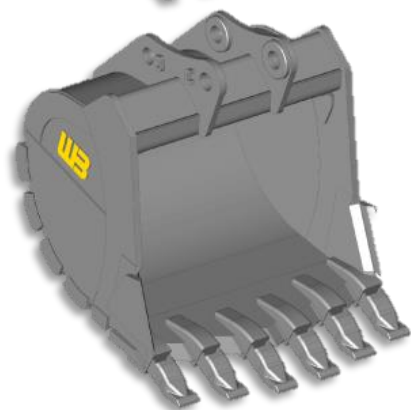
**DITCHING & GRADING BUCKETS** are designed for cleaning ditches, sloping, grading and other light duty finishing work. Their shallow depth & compact size make working in liquids to empty & contain solids within the bucket.

*Ditching and Grading Buckets available for both Mini & Full Sized Machines*



**SCOOP BUCKETS** are designed to provide maximum digging performance while keeping the versatility and convenience of a coupler system. The tip radius is reduced and breakout force is increased when up against a standard pin on/quick coupler combination.

*Scoop (Recessed Pin) Buckets available for both Mini & Full Sized Machines*



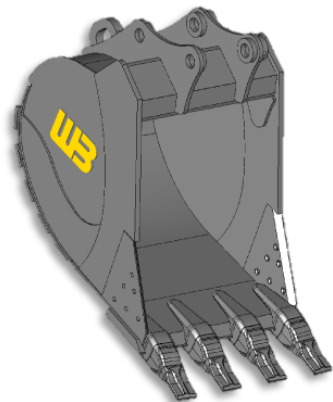
**HEAVY PENETRATION BUCKETS** are used in heavy abrasive applications where breakout force & cycle times are important. Breakout force is maximized due to decreased tip radius and increased pin spread. In addition, Heavy Penetration Rock Chisel Teeth would be installed where applicable.

*Heavy Penetration Buckets available for both Mini & Full Sized Machines*



**METRO STYLE BUCKETS** are to be used in low-impact materials such as dirt and loam where one wants to leave a smooth floor and minimal spillage. This bucket is engineered specifically for spade (wide tip) teeth, and where end shanks are set straight to create smooth edge; ideal for pipe and/or tile work.

*Metro Style Buckets available for both Mini & Full Sized Machines*



**HIGH CAPACITY BUCKETS** are designed and built for use in high production truck loading applications. Where proper applications are applied, these buckets will move more material in a minimal amount of passes; maximizing production

*High Capacity Buckets are available for both Mini & Full Sized Machines*

## CHOOSING THE RIGHT BUCKET

Choosing the wrong bucket can increase labor cost to upwards of 10-20%, and quickly reduce bucket performance and production. It can also cause rapid wear & fatigue for both the bucket and machine.

## RIGHT BUCKET FOR THE RIGHT APPLICATION

**HD**

**HD**

**SD**

**XD**

