

WB[®]
WERK-BRAU

NOX

Tiltrotators



WERK-BRAU.COM

Turn effectively in your direction!

The NOX Tiltrotator by Werk-Brau is one of the most effective tools for excavators with an operating weight of 3t up to 25t.

It's 360° endless rotation with a tilt angle of 2 x 50° turn your machine into a multi-functional carrier, enabling you to complete a variety of work in less time, and create a safe working area.

You also have the option of an electric feed-through for special safety quick couplers and tool recognition. The NOX Tiltrotators are prepared for 2D-/3D excavator systems meaning your machine becomes a semi-automatic carrier.

Work in deep trenches, and under or between existing tubes and pipes with ease.

- Strong, compact design
- No hindering or protruding components [e.g. hydraulic cylinders], ensuring any risk of damage is low
- Low overall height resulting in a high breakout force
- Only 2 greasing points saving time and consumables
- Low maintenance
- Easy and fast installation
- Low maintenance due to minimal wearing parts
- High stability due to special cast housing
- Integrated hydraulics to protect against damage



Fork Tines

Palletized or non-palletized, convert your excavator into a forklift.



Grabs

With over 45 years' experience in constructing grabs, the NOX can be combined with any type of grab. Using a HPX grab makes your NOX an absolute power package!

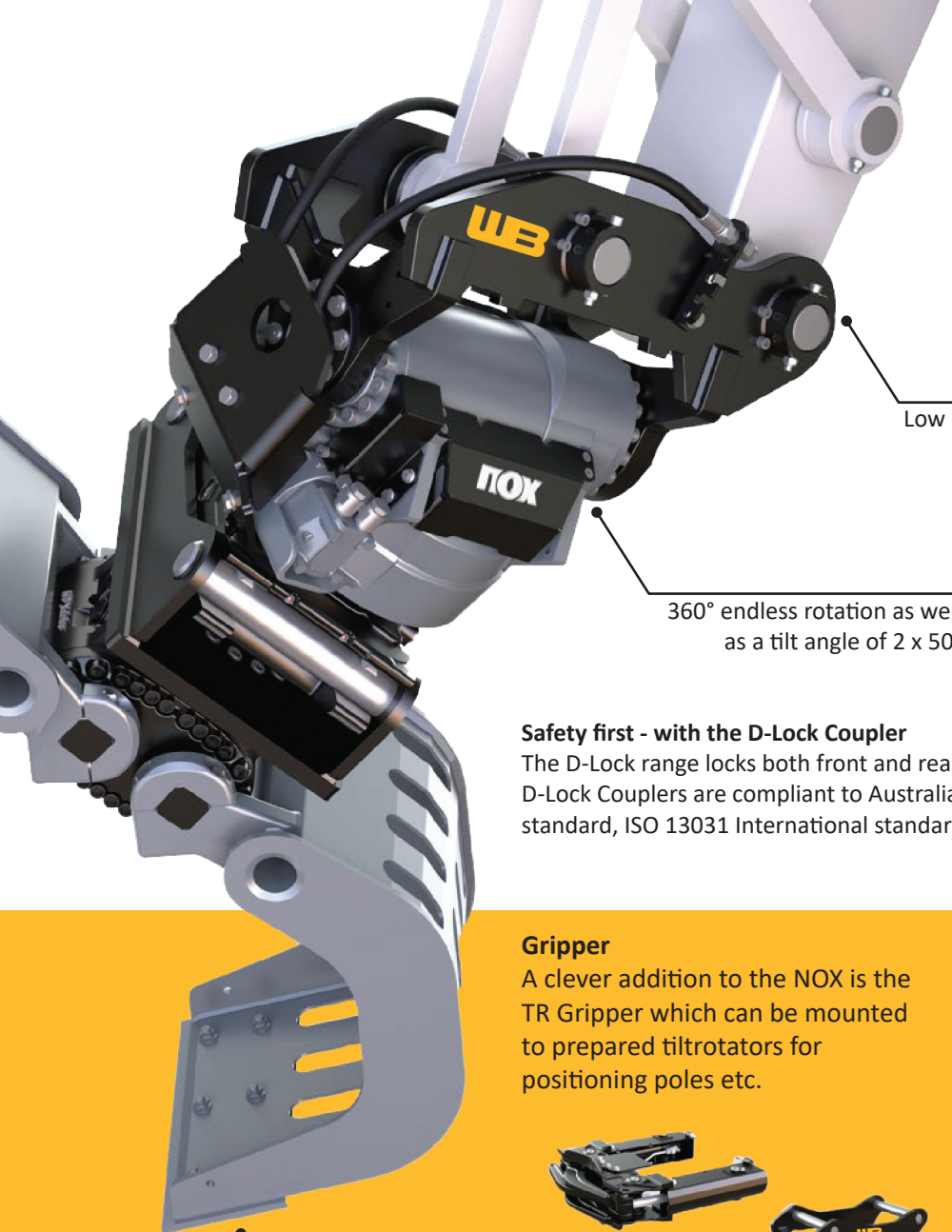


Buckets

The NOX can be used with all kinds of buckets including the narrow cable trench buckets as long as they do not protrude beyond the tiltrotator's width. The NOX can also excavate deep trenches that already have existing pipes.



NOX Tiltrotators



Low overall height resulting in high breakout force

360° endless rotation as well as a tilt angle of 2 x 50°

Safety first - with the D-Lock Coupler

The D-Lock range locks both front and rear pins and does not require a safety pin. D-Lock Couplers are compliant to Australian standard AS4772-2008, European EN474 standard, ISO 13031 International standard and all major contractor policies.

Gripper

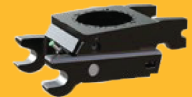
A clever addition to the NOX is the TR Gripper which can be mounted to prepared tiltrotators for positioning poles etc.

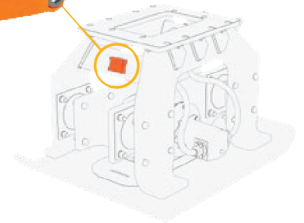
Quick Couplers

All in-house quick coupling systems such as S-Lock [incl. front lock], L-Lock, D-Lock can be mounted. The Werk-Brau D-Lock is standard for the US market.



Multi-functional carrier





Smarttag

- Tool tracking
- Tool automatization
- Geometry and dynamic data
- Fleet management



Rotation & Tilt Sensors

- Overview of geometry data
- NOXPROP autocalibration
- Connection to 2D/3D excavator controls like e.g. Leica, Trimble, Topcon and Moba

Control system NOXPROP

The perfectly suited proportional and sensitive NOXPROP control provides for more safety and precision.

Nox tiltrotator, quick coupler and mounted attachments can now be controlled conveniently and effectively with the smart NOXPROP control.

Easily retrofittable for every excavator. Individual assignment of functions and easy menu navigation thanks to the attached touchscreen. Integrated GPS, LTE, Bluetooth and WiFi antennas link your machine with the digital working world. Connection to fleet management is realized when combined with the SmartTag for maximum integration and effectivity.

The system is pre-equipped for future assistance functions such as dynamix scales, 20 height and depth display, BPM and fleet management or copilot systems.



Features

- Optimum NOX performance due to perfectly adapted control
- Autocalibration
- Geometry data of the attachment
- Interface to 2D/3D excavator control
- Remote maintenance
- Memory function of working profiles



Individual assignment of functions

Geometry overview of the attachment

User overview

Easy menu navigation

Gripper



Universal Grab



Fork Tines



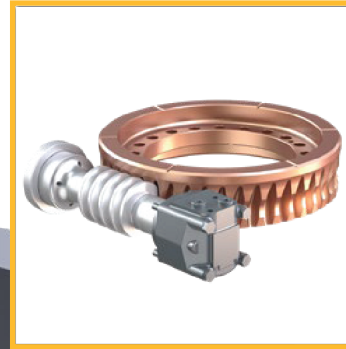
Cast Housing

High stability due to special alloy material, guaranteeing a long life even under the toughest conditions.



Worm Drive

Built for difficult tasks, the extremely robust drive is low maintenance.



Universal Joint

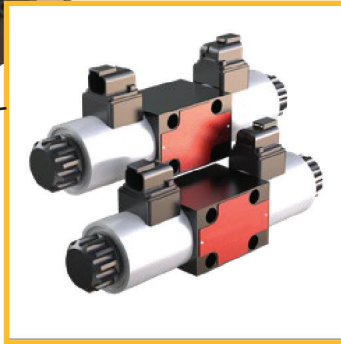
Whether you're using a front, side or backhoe bucket, the NOX provides precise positioning and backfilling.

NOX Tiltrotators



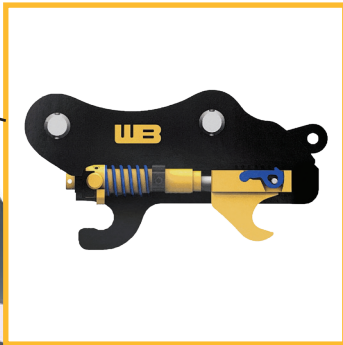
Elliptic Rotary Actuator

With no cylinders and a low design drive unit, it provides a low overall height as well as a narrow width. The tilt angle is also wider which allows greater flexibility.



Industrial Valves

Provides longevity thanks to the robust industrial valves.



D-Lock Front Lock

With the hydraulic D-Lock quick coupler, the mechanical dead point locking is provided by a hydraulic cylinder controlled from the cabin. An additional locking of the front pin [front lock] guarantees the highest possible safety standard. The Werk-Brau D-Lock Coupler is fitted as standard for the US market ensuring you can pick up standard OEM attachments.

Bucket



Sleeper Layer



Drum Cutter



High Flow Swivel

For attachments with high oil flow.

Tilt towards success. It's as simple as that.



Savings

The NOX makes your excavator a multi-functional carrier machine.

- Saves manpower and equipment on site.

Low Cost

Your task can be accomplished faster and without additional manpower. The repositioning of the carrier machine on site will often become redundant.

- Allows for a more efficient and cost-effective operation.
- With minimal greasing points and bearing bushes, the NOX is low-maintenance - saving on consumables, time and costs.



Profitability

Save up 25% in time to complete a job.

- Cost savings on staff and consumables, as well as minimised wear of the tool.
- More projects can be completed due to the time savings.



Increased safety

With a large tilt range of 2 x 50° and 360° rotation, frequent repositioning or maneuvering becomes redundant.

- Increased safety of the working environment.



TR-NOX Tiltrotators

Experience and innovation have led to one of the most advanced tools for excavators - the NOX: 360° endless rotation and tilt angle of 2 x 50° make it a universal joint, allowing for a while new range of applications. Combined with quick change system and various attachments this provides the highest efficiency at any construction site.

- **Precision and safety** due to smooth proportional control
- **No protruding parts:** excavate with a narrow bucket in small, deep canals, as well as under or in-between existing pipes
- **Low maintenance:** worm drive runs in permanent greasing - with only a few greasing points
- **High stability and long service life** provided by the special cast housing
- **Low overall height** thanks to elliptic rotary actuator
- **High and constant tilt force** due to cylinderless rotary actuator

Technical Data Tiltrotators

Type	Operating Weight Excavator [t]	Self Weight [lbs]	Width 'A' [inches]	Length 'B' [inches]	Height 'C' [inches]	Recommended Bucket Width Max [inches]	Tilt Angle [°]
TR06NOX	3-6	454	8.07	22.44	18.34	43.30	2 x 50
TR07NOX*	4-7	476	215	22.44	19.13	47.24	2 x 50
TR11NOX	6-11	740	8.46	23.62	24.33	55.11	2 x 50
TR14NOX	10-14	1201	9.76	30.51	28.66	62.99	2 x 50
TR19NOX	14-19	1814	9.52	33.89	29.64	66.92	2 x 50
TR25NOX	19-25	2455	10.23	37.63	34.40	78.74	2 x 50

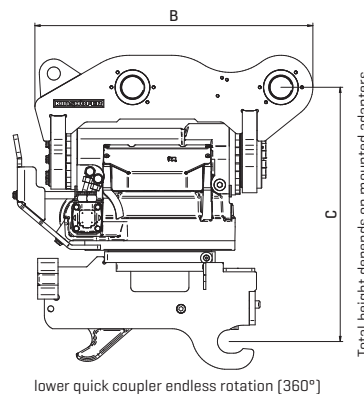
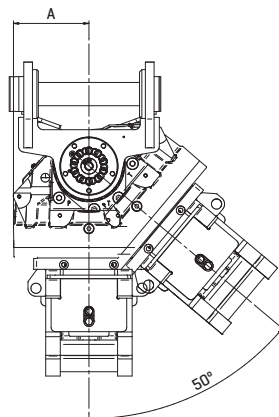
*TR07NOX presumably available from Q3/19

Standard package: tiltrotator, electric control system, upper bracket, lower quick coupler

Swivel

Type	TR06NOX			TR07NOX / TR11NOX / TR14NOX / TR19NOX / TR25NOX		
Control system	DF10	DF4	CSP	DF10	DF4	CSP
Channels extra function	4	2	4	4	4	4
Channels quick coupler	2	2	2	2	2	2
Tank line	-	-	-	-	-	1
Drain line	-	-	-	1	1	1
Electric swivel (optional)	-	-	-	12 x 0,5	12 x 0,5	12 x 0,5

HDTR240-80-TR25



lower quick coupler endless rotation [360°]

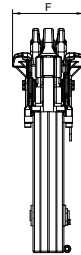
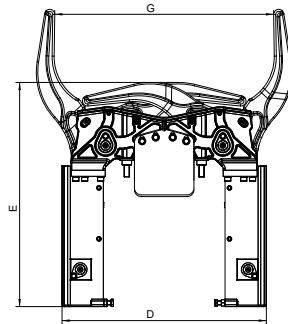


Accessories

Hydraulic Gripper module [Gripper]	Self weight [approx. lbs]	Dimensions D x E x F ²⁾ [inches]	Opening max. G [inches]	Closing time ³⁾ [sec]	Closing force [lbs]	Load capacity [lbs]
TRG07	88	18.50 x 20.47 x 5.51	16.73	1,5	1686	661
TRG11	176	23.62 x 25.95 x 8.26	25.39	1,3	2248	1102
TRG19	249	27.55 x 28.14 x 10.43	32.28	1,7	4046	1984
TRG25	429	35.23 x 29.92 x 11.61	43.30	2,0	4383	3086

²⁾ see technical drawing ³⁾ at 25 l/min

Gripper TRG11



Technical Data

Tiltrotator Type	TRO6NOX		
Control system	Unit	DF10	DF4 CSP
Breaking force max. [ISO]	lbs		7868
Tilt moment	lb-ft		6269
Rotation speed	l/min		9 at 40 l/min
Rotation torque	Nm		4500 constant at 360° endless
Oil flow extra function 1 & 2 max.	l/min		SD ¹⁾ : 35
Hydraulic pressure max.	MPa		25
Return line pressure max.	MPa		1

Tiltrotator Type	TRO7NOX		
Control system	Unit	DF10	DF4 CSP
Breaking force max. [ISO]	lbs		11240
Tilt moment	lb-ft		7375
Rotation speed	l/min		8,5 at 32 l/min
Rotation torque	Nm		4600 constant at 360° endless
Oil flow extra function 1 & 2 max.	l/min		SD ¹⁾ : 70/30
Hydraulic pressure max.	MPa		25
Return line pressure max.	MPa		2,5

NOX Tiltrotators

Tiltrotator Type		TR11NOX		
Control system	Unit	DF10	DF4	CSP
Breaking force max. (ISO)	lbs	16860		
Tilt moment	lb-ft	11800		
Rotation speed	1/min	8,5 at 40 l/min		
Rotation torque	Nm	6400 constant at 360° endless		
Oil flow extra function 1 & 2 max.	l/min	SD ¹⁾ : 90/30		
Hydraulic pressure max.	MPa	27		
Return line pressure max.	MPa	2,5		

Tiltrotator Type		TR14NOX		
Control system	Unit	DF10	DF4	CSP
Breaking force max. (ISO)	lbs	24728		
Tilt moment	lb-ft	19176		
Rotation speed	1/min	8,5 at 45 l/min		
Rotation torque	Nm	7800 constant at 360° endless		
Oil flow extra function 1 & 2 max.	l/min	SD ¹⁾ : 70/30 HF ²⁾ : 70/120	SD ¹⁾ : 70/30	SD ¹⁾ : 70/30 HF ²⁾ : 70/120
Hydraulic pressure max.	MPa	30		
Return line pressure max.	MPa	2,5		

Tiltrotator Type		TR19NOX		
Control system	Unit	DF10	DF4	CSP
Breaking force max. (ISO)	lbs	33721		
Tilt moment	lb-ft	25077		
Rotation speed	1/min	8,5 at 50 l/min		
Rotation torque	Nm	8800 constant at 360° endless		
Oil flow extra function 1 & 2 max.	l/min	SD ¹⁾ : 70/30 HF ²⁾ : 70/120	SD ¹⁾ : 70/30	SD ¹⁾ : 70/30 HF ²⁾ : 70/120
Hydraulic pressure max.	MPa	30		
Return line pressure max.	MPa	2,5		

Tiltrotator Type		TR25NOX		
Control system	Unit	DF10	DF4	CSP
Breaking force max. (ISO)	lbs	38217		
Tilt moment	lb-ft	32452		
Rotation speed	1/min	8,5 at 60 l/min		
Rotation torque	Nm	9300 constant at 360° endless		
Oil flow extra function 1 & 2 max.	l/min	SD ¹⁾ : 70/30 HF ²⁾ : 70/150	SD ¹⁾ : 70/30	SD ¹⁾ : 70/30 HF ²⁾ : 70/150
Hydraulic pressure max.	MPa	30		
Return line pressure max.	MPa	2,5		

¹⁾ SD = standard-swivel ²⁾ HF = high-flow-swivel



WERK-BRAU.COM

Werk-Brau Co., Inc.

PH 1 800 537 9561 | **FAX** 419 422 7207 | **E** sales@werk-brau.com

2800 Fostoria Avenue, Findlay, OH 45840 USA

 facebook.com/WerkBrau
 youtube.com/user/WerkBrau

© Copyright Werk-Brau Co., Inc.,
Werk-Brau products are patent protected. All information contained herein is strictly confidential and intended for the individual or entity it is addressed/distributed to. Copies/unauthorised distribution is strictly prohibited. Werk-Brau Co., Inc. reserves the right to amend specifications/detail without prior notification.