

OPERATOR'S MANUAL

Model WLB

Hydraulic Pickup Broom



AHP-00171 WLB



WB© WERK-BRAU CO., INC.
FINDLAY, OH USA
1-800-537-9561
MANUFACTURED BY M-B COMPANIES, INC.
NEW HOLSTEIN, WI USA
1-800-558-5800

TABLE OF CONTENTS

INTRODUCTION

General.....	2
Operator's Manual.....	2
Identification Numbers	2

SAFETY

Safety Alerts	3
Safety Decals	3
Pre-Start Guidelines.....	3
Operation Guidelines	3
Maintenance Guidelines	4

SETUP AND ADJUSTMENTS

Setup.....	5
Leveling.....	5
Pattern Adjustment	6
Deflector Adjustment	7

OPERATION

Pre-Startup Checks.....	8
Operation.....	8

MAINTENANCE

Maintenance Schedule	9
Lubrication	9
Filler Replacement	9
Core Removal	10
Brush Removal	10
Brush Installation.....	10
Core Installation	11

STORAGE 12

TROUBLESHOOTING 12

WARRANTY..... 13

REPLACEMENT BRUSH GUIDE..... 14

PARTS BREAKDOWNS CAN BE FOUND IN THE BACK OF THIS MANUAL

INTRODUCTION

GENERAL

The WFLB Model brooms are hydraulically-driven.

A quick hitch is used to connect to the prime mover.

OPERATOR'S MANUAL

You must read, understand and comply with all the safety and operating instructions in this manual before attempting to set-up and operate your power broom.

Failure to comply with the safety and operating instructions can result in loss of machine control, serious personal injury to you and/or bystanders and risk of equipment and property damage.

IDENTIFICATION NUMBERS

When contacting your authorized dealer for information, replacement parts or service, you **MUST** have the model and serial number of your unit.

Record the serial number in the space provided. The serial number plate/decals can be found in the location shown in Figure 1.

Model Name/Number	
Date Purchased:	Serial #:



Figure 1.

SAFETY

SAFETY ALERTS

Signal words and alert symbols notify of important safety precautions.



Indicates a hazardous situation which, if not avoided, will result in serious injury or death.



Indicates a hazardous situation which, if not avoided, could result in serious injury or death.



Indicates a hazardous situation or unsafe practice which, if not avoided, could result in minor or moderate injury or property damage.

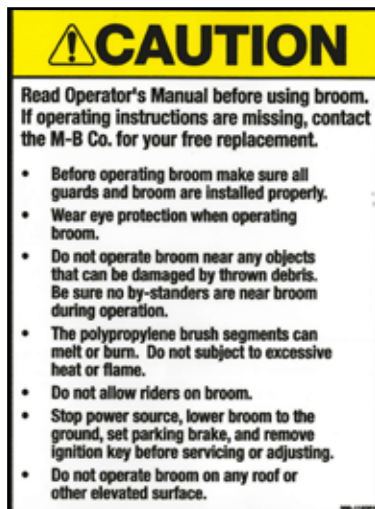
SAFETY DECALS

Although reading this manual and the safety instructions it contains will provide you with the necessary basic knowledge to operate this equipment safely and effectively, we have placed several safety labels on the unit to remind you of this important information while you are operating your unit.

All DANGER, WARNING, CAUTION, and instructional messages on your unit should be carefully read and obeyed. Bodily injury can result when these instructions are not followed. The information is for your safety and it is important.

These labels will act as a constant visual reminder to you, and others who may use the equipment, to follow the safety instructions necessary for safe, effective operation.

If any of these labels are lost or damaged, replace them at once. See your local dealer for replacements.



PRE-START GUIDELINES

- Install any covers or guards which may have been removed for shipping purposes.
- Before starting equipment, walk around equipment, making a visual inspection that all safety devices are properly installed and secured.
- Check that all hardware, fasteners, hydraulic fittings, etc. are in good condition and properly fastened. Replace any fatigued or damaged items with proper replacements.
- Personnel who are not required to be in the work area should be kept away. Never start the equipment unless you are absolutely certain that everyone in the area is clear of the machine and aware it is being started.
- Follow the manufacturer's recommended start-up procedure.

OPERATION GUIDELINES

Read, understand and follow all instructions in the manual and on the unit before starting.

NOTE: All reference to left, right, front or rear are given from the operator position and facing forward.

- To avoid serious injury or death, do not modify equipment. Any modifications made to equipment can be dangerous and can void equipment warranty.
- Never defeat a safety device to make a task easier.
- Always wear proper apparel when operating equipment; safety glasses, face shield or goggles, ear protection, and dust mask. Tie hair back. Never wear loose clothing or jewelry that could get caught in moving parts.
- Never operate equipment with covers or guards removed. Rotating parts can cause severe injury. Keep hands, feet, hair, jewelry and clothing away from all moving parts.
- Only allow responsible adults who are familiar with the instructions, to operate the unit (local regulations can restrict operator age).
- Clear the area of objects such as rocks, toys, wire, etc., which could be picked up and thrown.
- Be aware of surroundings. Be sure the area is clear of other people, bystanders or pets. Stop unit if anyone enters the area.

SAFETY

- Always look down and behind before and while traveling in reverse.
- Be aware of discharge direction and do not point discharge at anyone. Do not point the discharge at glass enclosures, automobiles, or windows.
- Always stand clear of the discharge area when operating this unit.
- Disengage all clutches and PTOs before starting engine.
- Never leave a running machine unattended. Always disengage the attachment and traction controls, lower the attachment, set the park brake, stop the engine and remove the ignition key before leaving the machine.
- Operate only in daylight or good artificial light.
- Never carry passengers.
- Do not operate the unit while under the influence of drugs, alcohol or other medication.
- Watch for traffic when operating near or crossing roadways.
- Use extra care when loading or unloading the unit into a trailer or truck.
- Keep in mind the operator is responsible for accidents occurring to other people or property.
- Data indicates that operators, age 60 years and above, are involved in a large percentage of power equipment-related injuries. These operators should evaluate their ability to operate the unit safely enough to protect themselves and others from injury.
- All operators should seek and obtain professional and practical instruction.
- Protect eyes, face and head from objects that may be thrown from unit. Wear appropriate hearing protection.
- Always wear substantial footwear and appropriate clothing. Wear footwear that improves traction on slippery slopes. DO NOT wear long scarves or loose clothing that could become entangled in moving parts.
- Abnormal Vibrations are a warning of trouble. Striking a foreign object can damage unit. Stop unit and engine. Wait for all moving parts to stop. Inspect unit and make any necessary repairs before restart.
- Never place your hands or any part of your body or clothing inside or near any moving part while unit is running.
- Stop engine before: refueling, cleaning, making adjustments or removing the attachment assembly.
- Follow the drive unit manufacturer's recommendations for wheel weights or counter weights.
- Make any adjustments before operating unit.
- Do not touch parts which may be hot from operation. Allow such parts to cool before attempting to service the unit.
- Before using, always visually check that hardware is present, intact and secure. Replace worn or damaged parts.
- Never operate the machine with damaged guards, or without safety protective devices in place.
- Follow the manufacturer's recommendations for towing weight restrictions and procedures.
- Original purchaser of this unit was instructed by the seller on safe and proper operation. If unit is to be used by someone other than original purchaser; loaned, rented or sold, ALWAYS provide this manual and any needed safety training before operation.
- The Operator must understand the functions and parameters of all controls and how to operate, as well as how to STOP in an Emergency.

MAINTENANCE GUIDELINES

- Maintain or replace safety and instruction decals/labels as necessary.
- Never run a unit in an enclosed area.
- Keep nuts and bolts tight and keep equipment in good condition
- Never tamper with safety devices. Check their proper operation regularly and make necessary repairs if they are not functioning properly.
- Keep unit free of debris and build-up. Clean up any oil spillage.
- Never make adjustments or repairs with the engine running unless specified otherwise in the engine manufacturer's manual.
- Components are subject to wear, damage, and deterioration. Frequently check components and replace with the manufacturer's recommended parts, when necessary.
- Check control operation frequently. Adjust and service as necessary.
- Use only factory authorized parts when making repairs.
- Always comply with factory specifications on all settings and adjustments.
- Only authorized service locations should be utilized for major service and repair requirements.
- Never attempt to make your own repairs on this unit unless you have been properly trained. Improper service procedures can result in hazardous operation, equipment damage and voiding the manufacturer's warranty.
- Stop engine on tractor and set parking brake before performing any adjustments on the machinery.
- Do not disassemble a pressurized system unless properly trained and equipped with adequate tooling.
- Escaping hydraulic fluid under pressure can have sufficient force to penetrate the skin, causing serious injury. Before operation, be sure that all hydraulic connections are tight and hoses are not damaged. Relieve pressure in system before making adjustments.
- Oils and fluids can be very hot under pressure. Use caution and allow the system to cool before beginning maintenance work.
- Never operate or pressurize one of these systems with worn or damaged components. Replace hoses, fittings, valves or other components which appear defective.
- Never adjust pressurized systems beyond recommended levels to achieve higher operating pressures.
- NEVER search for hydraulic leaks with only your hands. Use cardboard or a piece of wood.
- For engine equipped models, follow specific engine manufacturer's recommended service intervals for dirty/dusty environments.

SETUP AND ADJUSTMENTS

SETUP

The support chains connect the broom housing (frame) to the loader/tractor lift arms and set the broom ground clearance with the lift arms fully down. As the lift arms are raised and the hopper (bucket) tilted downward, the chains limit the broom housing movement, causing the broom to open for debris dumping. See Figure 1.

Proper setup and adjustment of the broom will increase the life of the brush and produces more efficient movement of material. Visually inspect the broom before each operating session and measure the adjustments once every 10 hours.

The following procedures must be followed in the prescribed sequence in order to be effective.

LEVELING

See Figures 1 through 4.

1. After the broom is mounted to the prime mover (skid-steer or loader), park the unit on a flat level surface; preferably concrete or asphalt.
2. Lower the lift arms all the way down.
3. Tilt the quick-attach or bucket cylinders as necessary so the casters contact the ground. If there is a way to set this location on the prime mover hydraulics, do so at this time.

NOTE: There must be a minimum of a 1" gap between the ground and the hopper cutting edge. See Figure 4.

4. Adjust the height of the broom housing wear shoes until the broom is level side-to-side. Loosen the (4) 5/16"-18 lock nuts on each wear shoe to adjust it in the vertical slots in the broom housing. See Figure 2.

IMPORTANT! Do not allow the hopper or its cutting edge to contact the ground during operation or premature wear will result.

5. If equipped with support chains, adjust chains to equal lengths so the broom sits level on its casters and wear shoes with the necessary 1" gap at the hopper cutting edge.
6. Check and adjust the brush pattern.



Figure 1

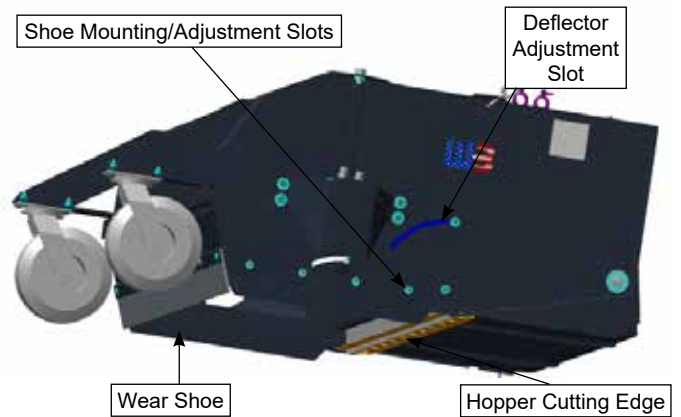


Figure 3

SETUP AND ADJUSTMENTS

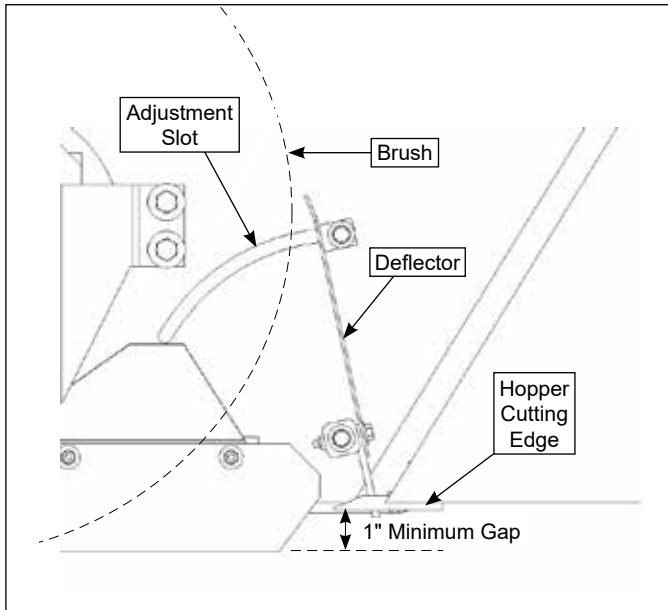


Figure 3

PATTERN ADJUSTMENT

1. After the broom has been leveled front to back, set the brush pattern (swept area).
2. With the unit on a flat level surface, run the unit for about 30 seconds in the down position while stationary. Stop the broom and back the unit away. The 'cleaned' (contact) patch should be 2"-4" wide, front to rear, for the entire length of the broom. See Figure 4.
3. If the brush contact patch is not approximately 3" wide, or varies in width from end to end, brush height adjustment is necessary.

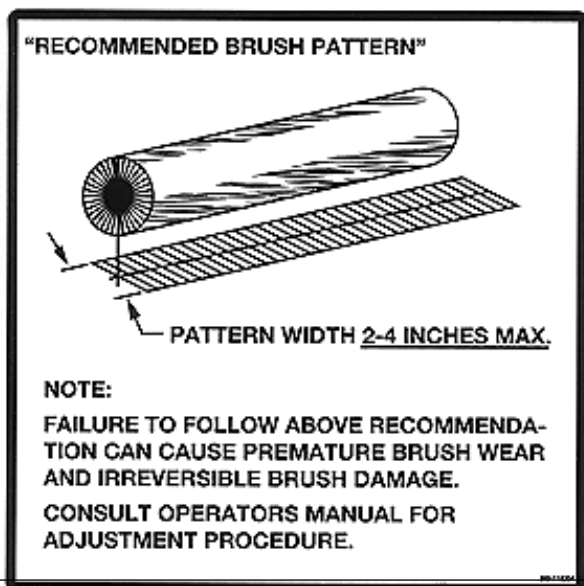


Figure 4

NOTE: The brush may create too heavy a pattern on either the left or right side if the support chains are not the same length.

4. If so equipped, verify chain lengths are equal. If necessary, adjust chain lengths.

NOTE: Splined hubs are mounted to each end of the brush core and are supported in bearings mounted indirectly to the brush height adjustment brackets. The brush drive motor(s), mounted directly to the outside of the brush height adjustment brackets, mate with the splined hubs.

5. Raise the broom slightly to create a small gap between the brush and ground.

NOTE: Only one side may require height adjustment to level the brush.

6. Loosen the adjustment jam nut(s) away from the broom housing. See Figure 5.

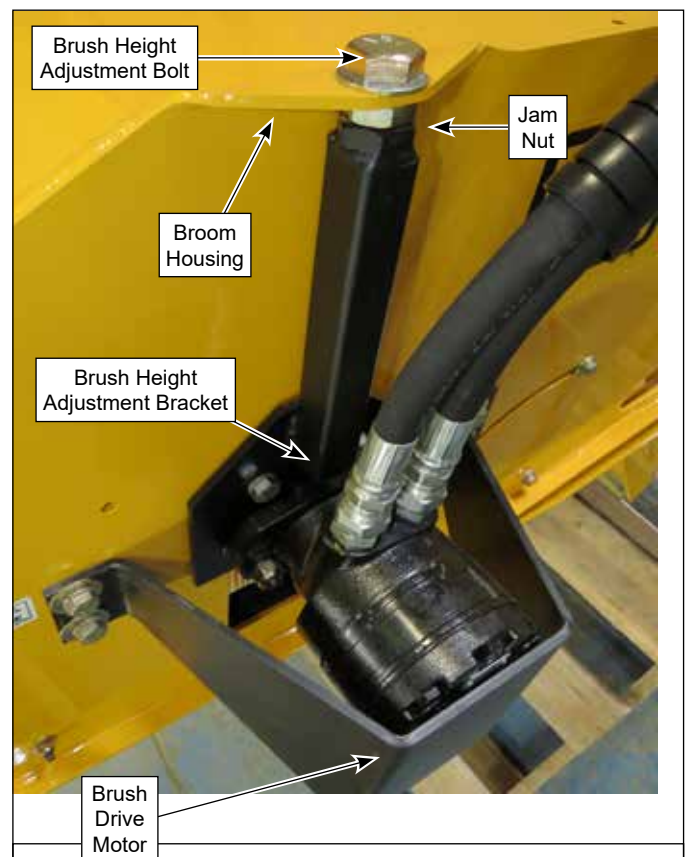


Figure 5

7. Adjust the brush height until the gap between the brush and the ground is equal for the entire length of the brush.

Turn the height adjustment bolt(s) counterclockwise (CCW) to push the brush height adjustment brackets down, lowering the brush. Turn the height adjustment bolt(s) clockwise (CW) to pull the brush height adjustment brackets up, raising the brush.

8. Tighten the adjustment jam nut(s) against from the broom housing.
9. If necessary, adjust the internal deflector position.

SETUP AND ADJUSTMENTS

DEFLECTOR ADJUSTMENT

The deflector is mounted inside the broom housing, to the rear of the brush. It deflects debris from the brush into the hopper. The position of the deflector must be kept near the brush and must be adjusted as the brush wears. The broom must be leveled and the brush pattern (swept area) set before adjusting the deflector position. See Figure 6.

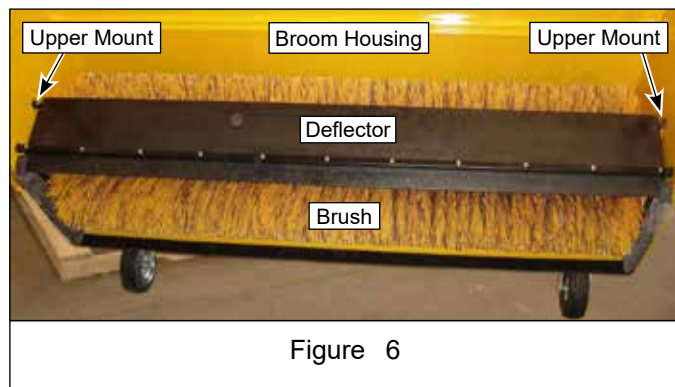


Figure 6

1. Loosen the deflector upper mounting bolt on each side of the broom housing. See Figures 2 and 3.

NOTE: The deflector upper mounting bolts ride in curved slots in the sides of the broom housing.

2. Tip the deflector toward the brush until very close, keeping deflector from contacting bristles. The deflector position can be seen through the curved slots in the sides of the broom housing.
3. Tighten the deflector mounting bolt on each side of the broom housing.

Once the broom has been properly adjusted, a short operation period is recommended for break-in; approximately 15 minutes. After this break-in period, verify that the broom is level and the pattern adjustment is correct.

OPERATION

PRE-START CHECKS

IMPORTANT! You must read, understand and comply with all the safety and operating instructions in this manual before attempting to set-up and operate the broom. Failure to comply with the safety and operating instructions can result in loss of machine control, serious personal injury to you and/or bystanders, and risk of equipment and property damage.

1. Visually inspect equipment and mounting hardware to ensure that all parts are secure and tightened properly.
2. Check for oil leaks and loose hose connections.
3. Inspect the room adjustments to ensure that the broom is level and that the brush pattern is set properly. Refer to the **SETUP AND ADJUSTMENT** section of this manual.
4. Inspect the bristle length to determine if segments need to be replaced.

OPERATION IMPORTANT!

- Sweep at a speed that is appropriate for the conditions and location.
- For heavy material such as gravel or stones, drive more slowly with a higher broom speed. For lighter material, drive faster with a lower broom speed.
- It may be necessary to increase broom contact pattern under some conditions. If the surface being swept is uneven and causes the broom to leave upswept patches, increase the pattern size to compensate.
- If the material being swept is dried-on or difficult to remove, such as mud or ice, it may be necessary to drive extremely slow to allow the broom to “scrub” the surface.

MAINTENANCE

MAINTENANCE SCHEDULE

- Check adjustments – every 10 hours.
- Grease bearings – after initial 10 hours, then every 100 - 200 hours thereafter.
- Grease pivot points – every 50 hours.

NOTE: Grease points are noted with an applicable decal.



- Replace brush filler – as needed.

LUBRICATION

- Grease bearings and pivot points per the MAINTENANCE SCHEDULE using Chevron Ultra Duty II, Grade 2; or equivalent high-temp grease.
- Grease points on the unit include (2) on the brush end support bearings and (4) on caster wheel pivot mounts and axle shafts.
- Use an ISO 32 or greater hydraulic fluid, dependant upon operating temperatures, for M-B supplied independent hydraulic systems. If the oil is supplied by the prime mover, use the prime mover manufacturer's recommended fluid.

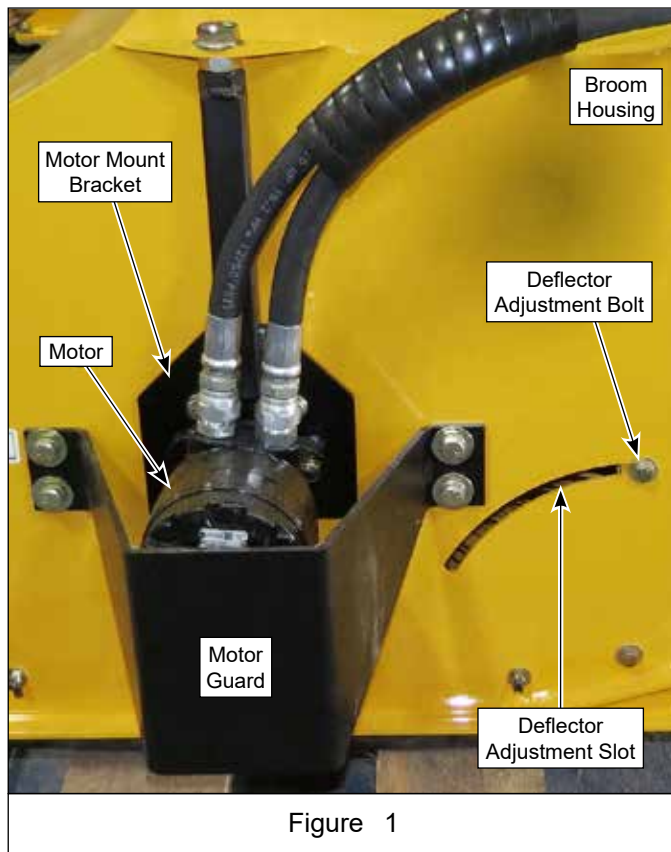


Figure 1

FILLER REPLACEMENT

Brush Removal

1. Lower broom until brush contacts the ground.

NOTE: Steps 2 and 3 apply to end with brush drive motor, whether broom is single or dual motor drive.

2. Remove (4) 1/2-13 x 1-1/4" hex head capscrews, flat washers and motor guard from broom housing. Retain guard and mounting hardware. See Figure 1.
3. Remove (2) 1/2"-13 lock nuts and motor from mount bracket. Slide motor out of mating splined hub. Let motor hang on hoses. Retain mounting hardware. See Figure 2.
4. On both sides of broom, remove (3) 1/2-13 x 1" hex head

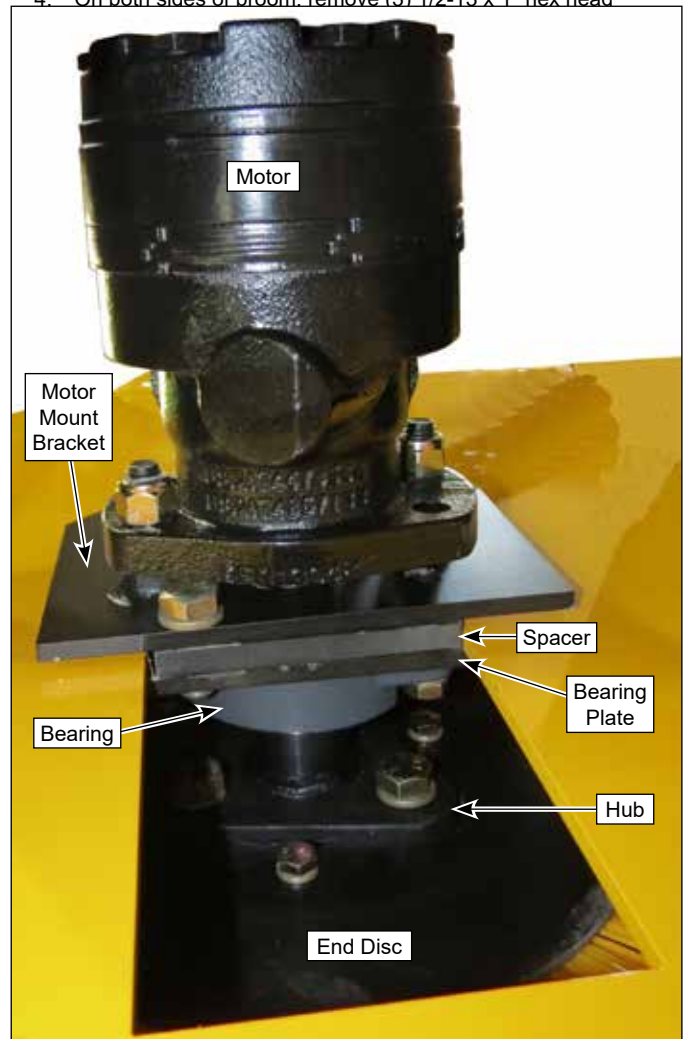


Figure 2 (Bottom View)

MAINTENANCE



Figure 3

Bristle Removal

1. On one end of core, loosen bearing setscrew(s) and slide support bearing with plate off hub.
2. Remove (3) 1/2-13 x 1" capscrews, lock washers and splined hub from end of core. Retain hub and mounting hardware. See Figures 2 and 3.
3. Remove (3) 5/16-18 x 3/4" capscrews, lock washers and end disc (wafer retainer plate) from end of core. Retain end disc and mounting hardware. See Figures 2 and 3.
4. Slide spent brush wafers and spacers off core and discard.

Bristle Installation

IMPORTANT! Proper wafer and spacer position must be followed to ensure proper balance on the core.

1. Stand core in upright position and begin filling by sliding a brush wafer and then a spacer down the full length of the core.
 - a. Note the location of the drive pin on the inside ring of each brush wafer. Position each wafer so its drive pin is positioned between the stop flanges. Rotate each subsequent wafer before installing so the position of its pin is staggered on the core by one stop flange. See Figure 4.



Figure 4

NOTE: Brush surface contact during initial operation will set all wafer drive pins up against the core stop flanges. See Figure 5.

- b. The circular spacers have unconnected, overlapped ends. Position the overlap of the first spacer between the stop flanges, rotated one flange ahead of the drive pin location of the immediately preceding brush wafer. All subsequent spacers must follow the same staggered placement pattern.
3. Continue stacking the core in a wafer-spacer, wafer-spacer configuration until it is full, ending with a brush wafer.

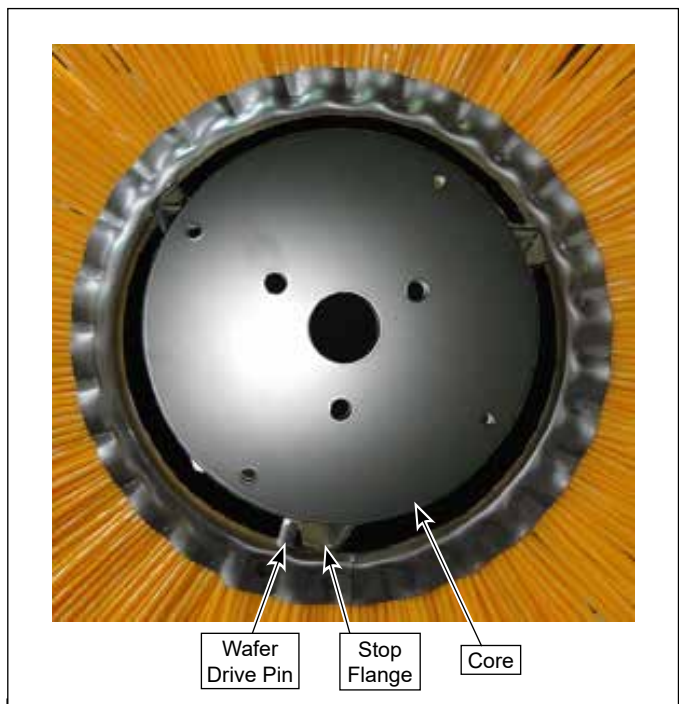


Figure 5

MAINTENANCE

NOTE: Always start and finish with a brush wafer. The last wafer should actually extend beyond the end of the core (Minimum 1/2") so the end disc compresses the spacers onto the core when tightened.

4. Install end disc on core with original hardware. See Figures 2 and 3.
5. Install splined hub on core with original hardware. See Figures 2 and 3.
6. Install support bearing with plate onto hub. Do not tighten bearing setscrew(s) at this time.

Core Installation

1. Loosen the deflector upper mounting bolt on each side of the broom housing. See Figure 1.

NOTE: The deflector upper mounting bolts ride in curved slots in the sides of the broom housing.

2. Tip the deflector away from the brush position to create clearance. The deflector position can be seen through the curved slots in the sides of the broom housing.
3. Lift broom and position refilled brush below housing. Lower broom down over brush while guiding bearing plates into housing.
4. Align mounting holes in inner bearing plate with holes in outer mount bracket.
5. Insert spacer between inner plate and outer bracket so that all holes align. Install original (3) 1/2-13 x 1" hex head capscrews and lock washers to secure outer bracket and spacer to inner plate. See Figure 2.
6. Tighten setscrew(s) to lock support bearing onto hub.

NOTE: Steps 7 and 8 apply to end with brush drive motor, whether broom is single or dual motor drive.

Apply grease to hub splines before installing hydraulic motor(s).

7. Slide motor shaft into mating splined hub and secure motor to outer plate with (2) 1/2"-13 lock nuts. See Figure 2.
8. Install motor guard on broom housing with (4) 1/2-13 x 1-1/4" hex head capscrews and flat washers. See Figure 1.
9. Tip the deflector toward the brush until very close, keeping deflector from contacting bristles. The deflector position can be seen through the curved slots in the sides of the broom housing. See Figure 1.
10. Tighten the deflector mounting bolt on each side of the broom housing.
11. Perform the leveling and the pattern adjustment procedures before placing machine back into service. Refer to the **SETUP AND ADJUSTMENTS** section of the manual.

Once the broom has been properly adjusted, a short operation period is recommended for break-in; approximately 15 minutes. After this break-in period, verify that the broom is level and the pattern adjustment is correct.

STORAGE

STORAGE

- Always store the broom in a supported position on blocks with the brush off the ground. If the bristles are stored in a deformed position for extended periods of time the broom will become severely out of balance.
- Store the broom in a location out of the sun and weather to prevent premature failure of plastic bristles. Bristles can become brittle when subjected to sunlight or repeated temperature changes.
- Connect couplers together to prevent contamination from entering hydraulic system.
- Disconnect all electrical connections between the broom and loader/tractor for extended storage to prevent battery drain.
- Properly clean the unit before storage and remove dirt, debris, salt, etc. to extend paint life.
- If the unit is power-washed, all lubrication points should be greased before storage.

TROUBLESHOOTING

Trouble	Possible Cause	Remedy
Broom does not rotate.	<ol style="list-style-type: none"> 1. No/Low hydraulic pressure/flow. 2. Hoses disconnected. 3. Hoses bent or kinked. 4. Air in hydraulic system. 5. Worn or damaged broom motor(s). 6. Brush support bearings worn or damaged. 7. Brush contact area too large. 8. Pressure relieving too low. 9. Excessive system backpressure. 	<ol style="list-style-type: none"> 1. Check loader/tractor operation. Check loader/tractor hydraulic oil level. 2. Connect hoses and fittings. 3. Remove sharp bends and kinks. 4. Raise broom and operate auxiliary controls until air is bled from system. 5. Repair or replace broom motor(s). 6. Replace brush support bearings. 7. Adjust brush pattern/contact area. 8. Adjust relief valve. 9. Check loader/tractor Operator's manual.
Broom rotates in wrong direction.	<ol style="list-style-type: none"> 1. Hoses installed incorrectly. 	<ol style="list-style-type: none"> 1. Switch hydraulic hose connections
Bristles wearing unevenly.	<ol style="list-style-type: none"> 1. Broom not level side to side. 2. Pattern adjustment not set. 3. Tires on loader/tractor at different pressures or of different sizes. 	<ol style="list-style-type: none"> 1. Check loader/tractor lift arms for level. 2. Adjust brush height adjustment brackets. 3. Check tire pressure, sizes and rating. Adjust and/or correct as necessary.
Brushes wear very quickly.	<ol style="list-style-type: none"> 1. Brush pattern too wide. 	<ol style="list-style-type: none"> 1. Adjust brush pattern to be 2-4" wide. Refer to the Setup and Adjustments section of this manual.
Broom bounces during sweeping.	<ol style="list-style-type: none"> 1. Travel speed too fast and/or brush speed too slow. 2. Bristles deformed by improper storage. 3. Bent brush core. 	<ol style="list-style-type: none"> 1. Adjust to find correct ground and brush speed for surface. 2. Replace brush wafers. 3. Replace core.
Broom sweeping poorly.	<ol style="list-style-type: none"> 1. Material is 'caked-on' or frozen. 2. Uneven sweeping surface. 3. Material is too heavy. 4. Broom rotating too slowly. 5. Prime mover moving too fast. 	<ol style="list-style-type: none"> 1. Slow down and 'scrub' surface. 2. Increase brush pattern. 3. Slow down loader/tractor speed. 4. Increase loader/tractor engine speed (rpm). 5. Slow down loader/tractor speed.
Hopper (bucket) does not open.	<ol style="list-style-type: none"> 1. Chains not equal in length or disconnected. 2. No/Low hydraulic pressure/flow. 3. Hoses disconnected. 4. Hoses bent or kinked. 5. Air in hydraulic system. 	<ol style="list-style-type: none"> 1. Connect chains and adjust lengths to be equal. 2. Check loader/tractor operation. Check loader/tractor hydraulic oil level. 3. Connect hoses and fittings. 4. Remove sharp bends and kinks. 5. Raise broom and operate auxiliary controls until air is bled from system.

Warranty/Product Registration

A Warranty Registration Form must be submitted online to make warranty effective.

Warranty Start Date:

All claims must be submitted using the proper form and emailed to mbattachments@aebi-schmidt.com.

To be eligible for warranty payment the product must be registered with M-B Companies via

www.m-bco.com/warranty

M-B Companies, Inc. reserves the right to decline any claim that does not meet above requirements.

Pre-Approval Required Prior To ANY Work Being Performed.

LIMITED WARRANTY

Limited Warranty: Subject to the limitations set forth herein, M-B Companies, Inc. ("M-B") warrants its products to be free from defects in material and workmanship for a period of twelve (12) months from the date of delivery of the product to its original owner, except that the warranty is twelve (12) months solely for the following products: Truck Mounted Pavement Marking Equipment, Airport Snow Removal Products, Attachment Products, Brushes. Parts shall have a ninety (90) day warranty. This warranty is not transferable without the written consent of M-B.

Notice: M-B's obligations under this Limited Warranty are conditioned on M-B receiving, within the warranty period, written notice from Buyer specifying the nature of any alleged defect and requesting corrective action by Seller.

Remedies: M-B, at its option, will repair or replace, or provide a credit to Buyer for, defective warranted items. If requested by M-B, products or parts for which a warranty claim is made shall be returned, transportation prepaid, to M-B's factory. Buyer shall not return any product for repair, replacement or credit without M-B's advance written consent.

Other Manufacturer's Warranty: On products furnished by M-B, but manufactured by any other manufacturer, the warranty of said manufacturer, if any, will be assigned to Buyer, if the said warranty is assignable. However, M-B does not represent or guarantee that such manufacturer will comply with any of the terms of the warranty of such manufacturer.

Exclusions: Any improper use, operation beyond capacity, or substitution of parts not approved by M-B, or alteration or repair by others in such a manner as in M-B's judgment materially and/or adversely affects the product shall void this warranty. This warranty does not apply to defects caused by damage or unreasonable use while in the possession of the owner, including but not limited to: failure to provide reasonable and necessary maintenance, normal wear, routine tune ups or adjustments, improper handling or accidents, operation at speed or load conditions contrary to published specifications, improper or insufficient lubrication, or improper storage.

Seller manufactures power brooms that mount to many makes and models of equipment. Seller attempts to ensure that the mounting frames fit correctly. However, the large number of tractor models, types and options currently available, compounded by frequent manufacturer design changes, may prevent Seller from supplying a frame that fits every unit correctly. Therefore, unless Buyer supplies drawing which detail the attachment points on the specific unit to which the broom will be mounted, Seller will not be responsible for the fit of the mounting frame.

The batteries, tires, rubber material, brushes and material normally consumed in operation, and major components such as engines, air compressors, and hydraulic pumps and motors are excluded from this warranty but may be covered to the extent of any warranty received by M-B from its supplier if permitted by the terms of such warranty.

Limitations of liability: M-B shall not be liable for any incidental, consequential, punitive or special damages of any kind, including, but not limited to, consequential labor costs or transportation charges in connection with the repair or replacement of defective parts, or lost time profits or expense which may have accrued because of said defect.

M-B disclaims all other warranties, whether express or implied, including but not limited to any implied warranty of merchantability or fitness for a particular purpose. This warranty is exclusive remedy of buyer. This warranty cannot be extended, broadened or changed in any respect except in writing by an authorized officer of M-B.

Notwithstanding anything in this warranty is to the contrary, in no event shall M-B's total liability hereunder exceed the purchased price of the particular product.

REPLACEMENT BRUSH KITS

Part Number

907-63474

907-64664

Description

REFILL, 25 IN. X 7 FT. ,WAFER,COMBO

REFILL, 25 IN. X 6 FT. ,WAFER,COMBO

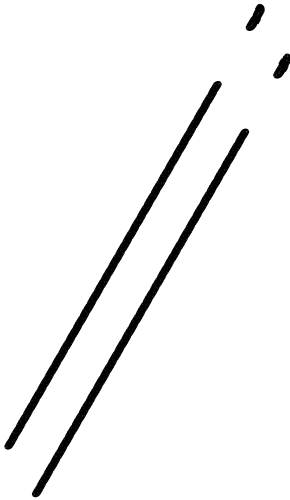


WB© WERK-BRAU CO., INC.
FINDLAY, OH USA
1-800-537-9561
MANUFACTURED BY M-B COMPANIES, INC.
NEW HOLSTEIN, WI USA
1-800-558-5800

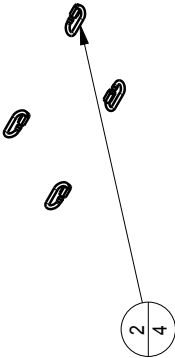
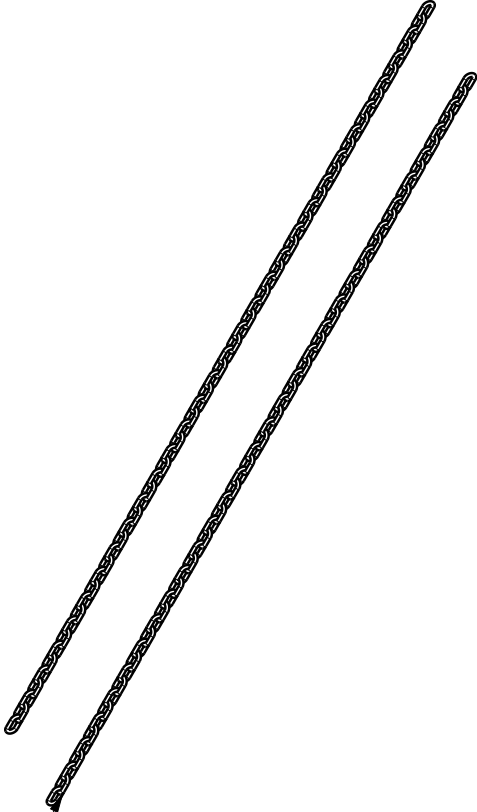
1

2

ZONE	REV	CN	DESCRIPTION	BY	DATE



SCALE 0.050




B

A

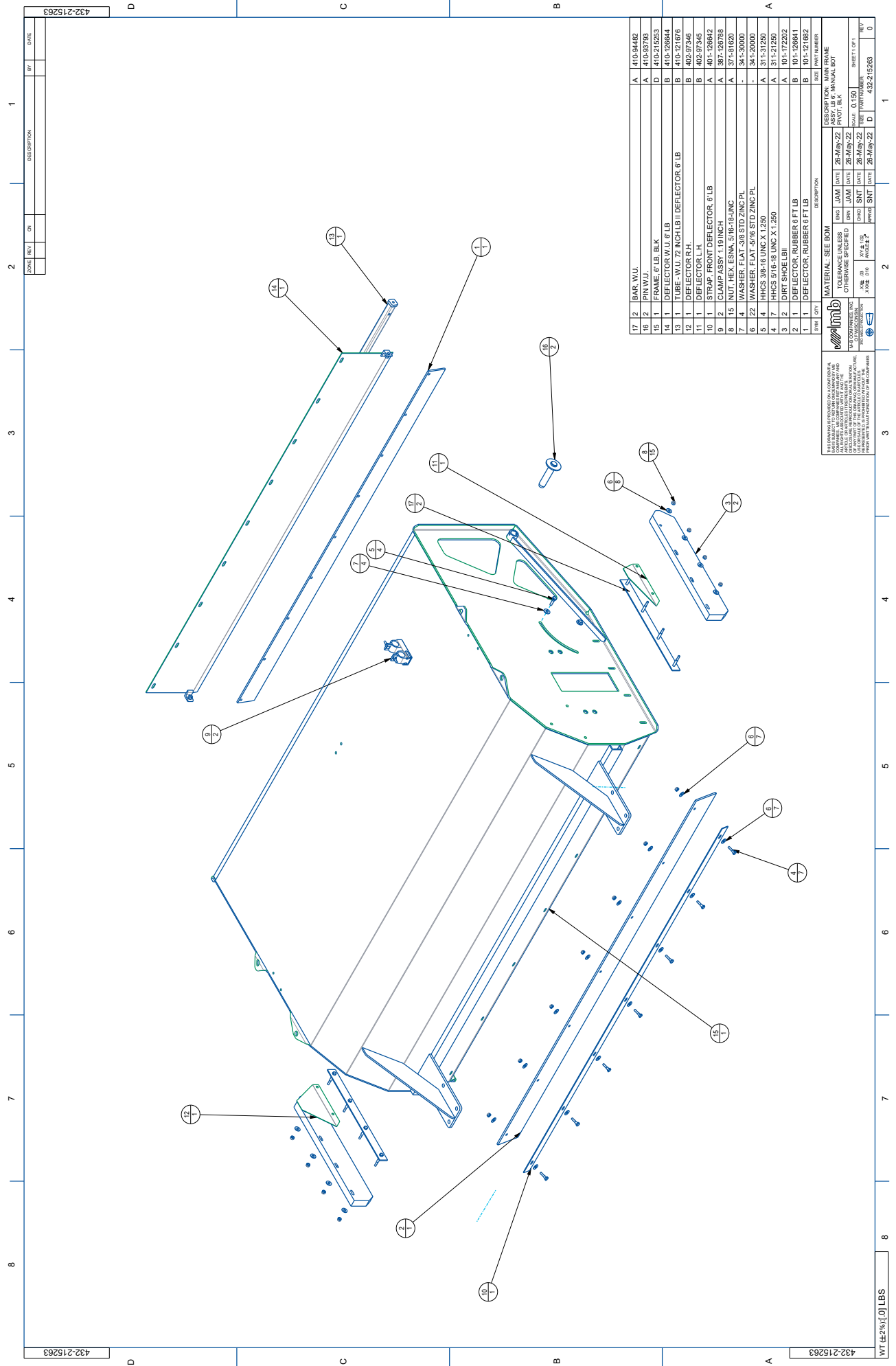
A

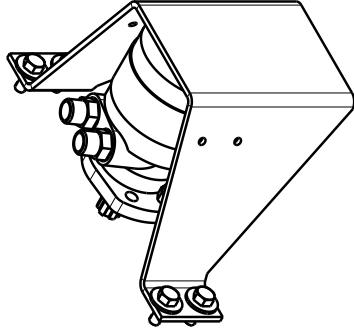
3	2	X	509-72814
2	4	A	CHAIN CONNECTOR THREADED
1	2	A	startpart.prt
SYM	QTY	DESCRIPTION	SIZE PART NUMBER

																																																																																																																																																																																																																																																																																																																																																																																																																																																																																																																																																																																																																																																																																																																																																																																																																																																																																																																																																																																																																																																																																																																																																																																																																																																																																																																																																																																																																																																																																			
---	--	--	--	--	--	--	--	--	--	--	--	--	--	--	--	--	--	--	--	--	--	--	--	--	--	--	--	--	--	--	--	--	--	--	--	--	--	--	--	--	--	--	--	--	--	--	--	--	--	--	--	--	--	--	--	--	--	--	--	--	--	--	--	--	--	--	--	--	--	--	--	--	--	--	--	--	--	--	--	--	--	--	--	--	--	--	--	--	--	--	--	--	--	--	--	--	--	--	--	--	--	--	--	--	--	--	--	--	--	--	--	--	--	--	--	--	--	--	--	--	--	--	--	--	--	--	--	--	--	--	--	--	--	--	--	--	--	--	--	--	--	--	--	--	--	--	--	--	--	--	--	--	--	--	--	--	--	--	--	--	--	--	--	--	--	--	--	--	--	--	--	--	--	--	--	--	--	--	--	--	--	--	--	--	--	--	--	--	--	--	--	--	--	--	--	--	--	--	--	--	--	--	--	--	--	--	--	--	--	--	--	--	--	--	--	--	--	--	--	--	--	--	--	--	--	--	--	--	--	--	--	--	--	--	--	--	--	--	--	--	--	--	--	--	--	--	--	--	--	--	--	--	--	--	--	--	--	--	--	--	--	--	--	--	--	--	--	--	--	--	--	--	--	--	--	--	--	--	--	--	--	--	--	--	--	--	--	--	--	--	--	--	--	--	--	--	--	--	--	--	--	--	--	--	--	--	--	--	--	--	--	--	--	--	--	--	--	--	--	--	--	--	--	--	--	--	--	--	--	--	--	--	--	--	--	--	--	--	--	--	--	--	--	--	--	--	--	--	--	--	--	--	--	--	--	--	--	--	--	--	--	--	--	--	--	--	--	--	--	--	--	--	--	--	--	--	--	--	--	--	--	--	--	--	--	--	--	--	--	--	--	--	--	--	--	--	--	--	--	--	--	--	--	--	--	--	--	--	--	--	--	--	--	--	--	--	--	--	--	--	--	--	--	--	--	--	--	--	--	--	--	--	--	--	--	--	--	--	--	--	--	--	--	--	--	--	--	--	--	--	--	--	--	--	--	--	--	--	--	--	--	--	--	--	--	--	--	--	--	--	--	--	--	--	--	--	--	--	--	--	--	--	--	--	--	--	--	--	--	--	--	--	--	--	--	--	--	--	--	--	--	--	--	--	--	--	--	--	--	--	--	--	--	--	--	--	--	--	--	--	--	--	--	--	--	--	--	--	--	--	--	--	--	--	--	--	--	--	--	--	--	--	--	--	--	--	--	--	--	--	--	--	--	--	--	--	--	--	--	--	--	--	--	--	--	--	--	--	--	--	--	--	--	--	--	--	--	--	--	--	--	--	--	--	--	--	--	--	--	--	--	--	--	--	--	--	--	--	--	--	--	--	--	--	--	--	--	--	--	--	--	--	--	--	--	--	--	--	--	--	--	--	--	--	--	--	--	--	--	--	--	--	--	--	--	--	--	--	--	--	--	--	--	--	--	--	--	--	--	--	--	--	--	--	--	--	--	--	--	--	--	--	--	--	--	--	--	--	--	--	--	--	--	--	--	--	--	--	--	--	--	--	--	--	--	--	--	--	--	--	--	--	--	--	--	--	--	--	--	--	--	--	--	--	--	--	--	--	--	--	--	--	--	--	--	--	--	--	--	--	--	--	--	--	--	--	--	--	--	--	--	--	--	--	--	--	--	--	--	--	--	--	--	--	--	--	--	--	--	--	--	--	--	--	--	--	--	--	--	--	--	--	--	--	--	--	--	--	--	--	--	--	--	--	--	--	--	--	--	--	--	--	--	--	--	--	--	--	--	--	--	--	--	--	--	--	--	--	--	--	--	--	--	--	--	--	--	--	--	--	--	--	--	--	--	--	--	--	--	--	--	--	--	--	--	--	--	--	--	--	--	--	--	--	--	--	--	--	--	--	--	--	--	--	--	--	--	--	--	--	--	--	--	--	--	--	--	--	--	--	--	--	--	--	--	--	--	--	--	--	--	--	--	--	--	--	--	--	--	--	--	--	--	--	--	--	--	--	--	--	--	--	--	--	--	--	--	--	--	--	--	--	--	--	--	--	--	--	--	--	--	--	--	--	--	--	--	--	--	--	--	--	--	--	--	--	--	--	--	--	--	--	--	--	--	--	--	--	--	--	--	--	--	--	--	--	--	--	--	--	--	--	--	--	--	--	--	--	--	--	--	--	--	--	--	--	--	--	--	--	--	--	--	--	--	--	--	--	--	--	--	--	--	--	--	--	--	--	--	--	--	--	--	--	--	--	--	--	--	--	--	--	--	--	--	--	--	--	--	--	--	--	--	--	--	--	--	--	--	--	--	--	--	--	--	--	--	--	--	--	--	--	--	--	--	--	--	--	--	--	--	--	--	--	--	--	--	--	--	--	--	--	--	--	--	--	--	--	--	--	--	--	--	--	--	--	--	--	--	--	--	--	--	--	--	--	--	--	--	--	--	--	--	--	--	--	--	--	--	--	--	--	--	--	--	--	--	--	--	--	--	--	--	--	--	--	--	--	--	--	--	--	--	--	--	--	--	--	--	--	--	--	--	--	--	--	--	--	--	--	--	--	--	--	--	--	--	--	--	--	--	--	--	--	--	--	--	--	--	--	--	--	--	--	--	--	--	--	--	--	--	--	--	--	--	--	--	--	--	--	--	--	--	--	--	--	--	--	--	--	--	--	--	--	--	--	--	--	--	--	--	--	--	--	--	--	--	--	--	--	--	--	--	--	--	--	--	--	--	--	--	--	--	--	--	--	--	--	--	--	--	--	--	--	--	--	--	--	--	--	--	--	--	--	--	--	--	--	--	--	--	--	--	--	--	--	--	--	--	--	--	--	--	--	--	--	--	--	--	--	--	--	--	--	--	--	--	--	--	--	--	--	--	--	--	--	--	--	--	--	--	--	--	--	--	--	--	--	--	--	--	--	--	--	--	--	--	--	--	--	--	--	--	--	--	--	--	--	--	--	--	--	--	--	--	--	--	--	--	--	--	--	--	--	--	--	--	--	--	--	--	--	--	--	--	--	--	--	--	--	--	--	--	--	--	--	--	--	--	--	--	--	--	--	--	--	--	--	--	--	--	--	--	--	--	--	--	--	--	--	--	--	--	--	--	--	--	--	--	--	--	--	--	--	--	--	--	--	--	--	--	--	--	--	--	--	--	--	--	--	--	--	--	--	--	--	--	--	--	--	--	--	--	--	--	--	--	--	--	--	--	--	--	--	--	--	--



1

2





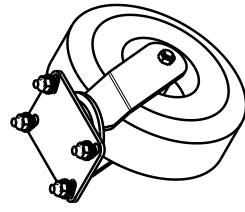
ZONE	REV	CN	DESCRIPTION	BY	DATE

<p>THIS DRAWING IS PROVIDED ON A CONFIDENTIAL BASIS SUBJECT TO RETURN ON DEMAND BY MB COMPANIES. MB COMPANIES RETAINS ANY AND ALL RIGHTS IN THIS DRAWING, INCLUDING THE DISCLOSURE, REPRODUCTION OR ALTERATION OF ANY PART OF THIS DRAWING, OR ALTERATION OR SALE OF THE ARTICLE OR ARTICLES OF WHICH THIS DRAWING IS A PART.</p> <p>PRIOR WRITTEN AUTHORIZATION OF MB COMPANIES</p>	 <p>MB COMPANIES, INC. OF WISCONSIN</p>  <p>3RD ANGLE PROJECTION</p>	MATERIAL	NUMBER:	SEE BOM	QTY:	SEE BOM	NAME:	LB MOTOR AND GUARD ASSY			
								TOLERANCE UNLESS OTHERWISE SPECIFIED			
								DRN	TMJ	DATE	16-Jun-17
								CHKD	YY	DATE	16-Jun-17
APRVD	YY	DATE	16-Jun-17								
				SIZE	PART NUMBER:		SCALE:	SHEET 1 OF 1			
				B	432-202184		B	REV 0			

၁၃

M-B COMPANIES, INC. OF WISCONSIN 3RD ANGLE PROJECTION

THIS DRAWING IS PROVIDED ON A CONFIDENTIAL BASIS SUBJECT TO RETURN ON DEMAND BY MB COMPANIES. MB COMPANIES RETAINS ANY AND ALL RIGHTS ASSOCIATED WITH IT AND THE ARTICLE OR ARTICLES IT REPRESENTS. DISCLOSURE, REPRODUCTION OR ALTERATION OF ANY PART OF THIS DRAWING, OR MANUFACTURE OR SALE OF THE ARTICLE OR ARTICLES REPRESENTED, IS PROHIBITED WITHOUT THE PRIOR WRITTEN AUTHORIZATION OF MB COMPANIES.



THIS DRAWING IS PROVIDED ON A CONFIDENTIAL BASIS TO THE INDICATED RECIPIENT. MB COMPANIES, MB COMPANIES RETAINS ANY AND ALL RIGHTS ASSOCIATED WITH IT AND THE ARTICLE OR ARTICLES IT REPRESENTS. DISCLOSURE, REPRODUCTION OR ALTERATION OF ANY PART OF THIS DRAWING, OR MANUFACTURE, SALE, DISTRIBUTION, OR USE OF ANYTHING THEREBY REPRESENTED, IS PROHIBITED WITHOUT THE PRIOR WRITTEN AUTHORIZATION OF MB COMPANIES

3	4	NUT, SERRATED 1/2-13 PLATED	A	371-92056
2	4	CARRIAGE BOLT 1/2-13 UNC X 1.5	A	370-92051
1	1	CASTER WHEEL, 10" W/ SWIVEL, 350LB CAP., HD	A	100-132132
SYM	QTY	DESCRIPTION	SIZE	PART NUMBER
MATERIAL		NUMBER:	SEE BOM	QTY: SEE BOM
		NAME:		
LB CASTER ASSEMBLY				
		SCALE: 0.310		
		SHEET 1 OF 1		
		REV		
		SIZE: PART NUMBER:		
		B 432-202157 0		

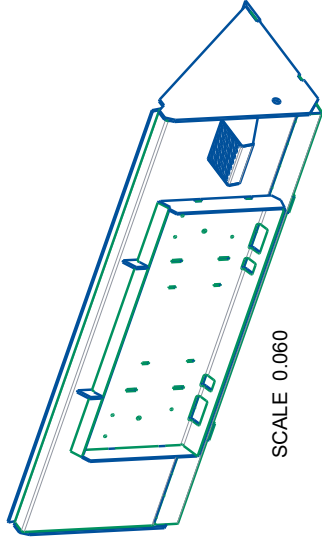
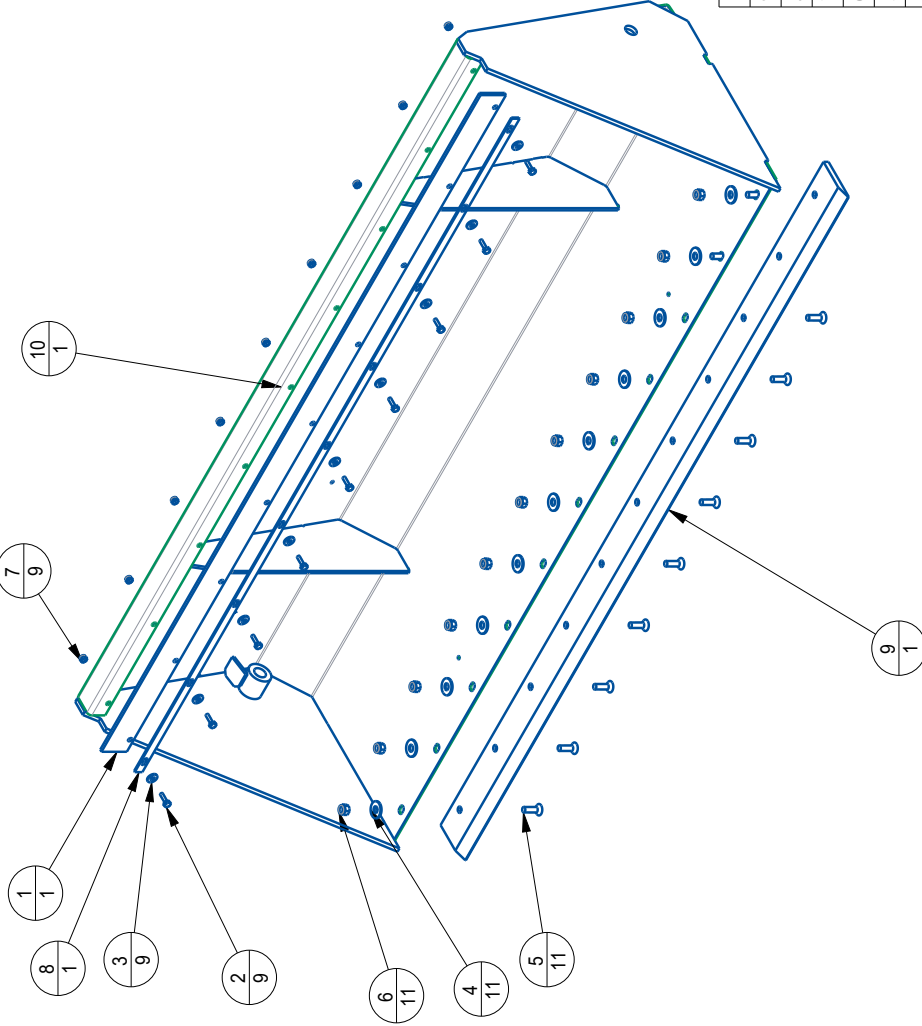
SEE BOM	QTY:	SEE BOM
DRN	DATE	15-Jun-17
CHKD	DATE	15-Jun-17
APRVID	DATE	16-Jun-17

SCALE: 0.310	SHEET 1 OF 1	
SIZE B	PART NUMBER: 432-202157	REV 0

1


2

ZONE	REV	CN	DESCRIPTION	BY	DATE



SCALE 0.060

SYM	QTY	DESCRIPTION	SIZE	PART NUMBER
10	1	BUCKET 6' LB W/STD SKIDSTEER MTG,BLK	C	410-215256
9	1	BUCKET EDGE, 6' LB BOLT - ON	A	402-125304
8	1	STRIP, DEFLECTOR 6' LB	A	401-121679
7	9	NUT, HEX, ESNA, 5/16-18-UNC	A	371-81620
6	11	NUT, HEX, ESNA, 1/2-13-UNC	A	371-81417
5	11	FLAT HEAD, SOCKET CAP SCREW 1/2-13 NC X 1.50	-	370-125308
4	11	WASHER, FLAT -1/2 STD ZINC PL	-	341-50000
3	9	WASHER, FLAT -5/16 STD ZINC PL	-	341-20000
2	9	HHCS 5/16-18 UNC X 1.000	A	311-21000
1	1	DEFLECTOR, RUBBER 6 FT LB	B	101-121681

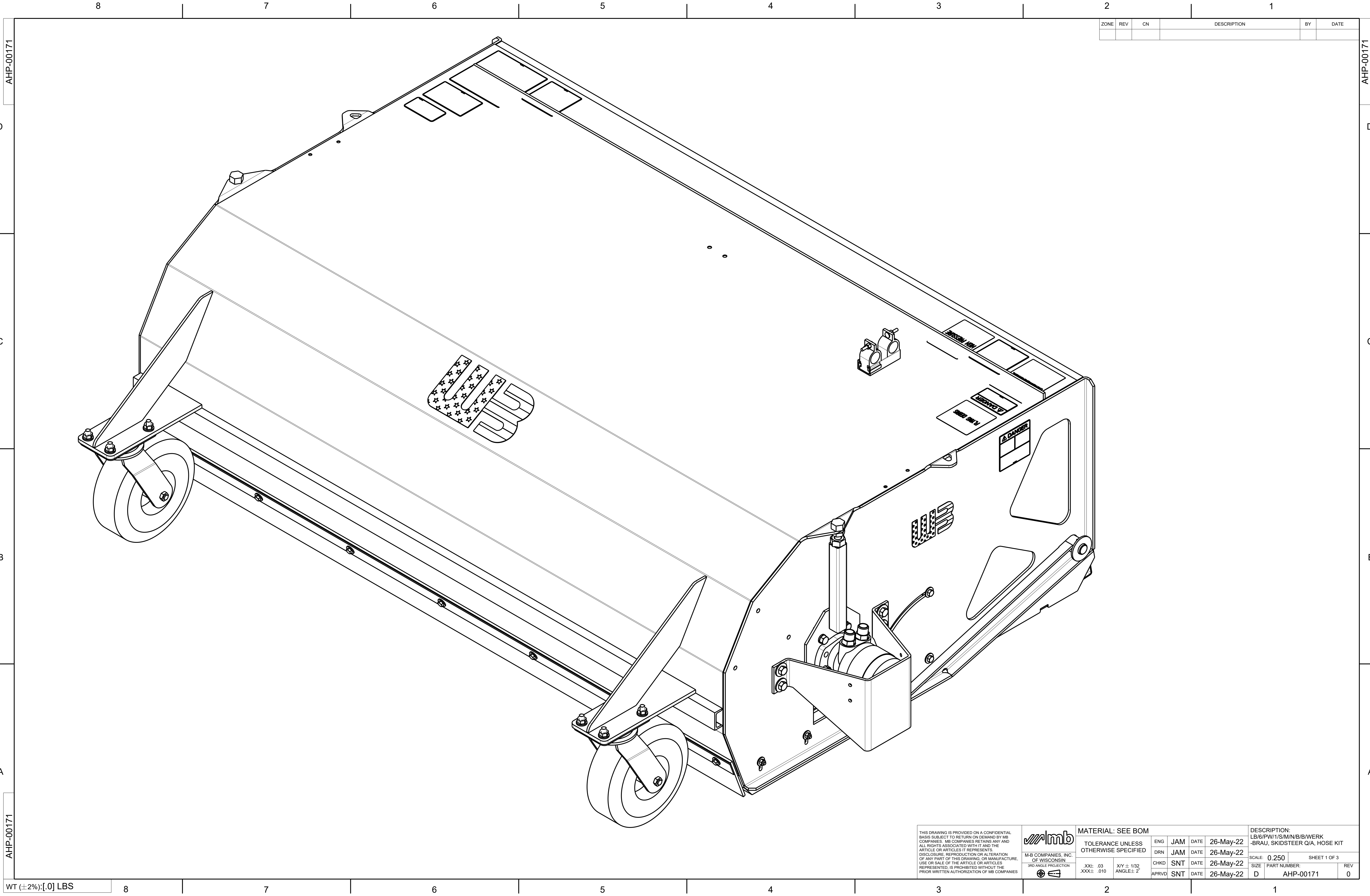
 M-B COMPANIES, INC. OF WISCONSIN 3RD ANGLE PROJECTION		MATERIAL: SEE BOM				DESCRIPTION: LB 6' BUCKET			
		TOLERANCE UNLESS OTHERWISE SPECIFIED	ENG	JAM	DATE	SKIDSTEER Q/A MTG ASSY,BLK	SCALE: 0.100	SHEET 1 OF 1	REV
XXL .03	XY L183	CHKD	SNT	DATE	26-May-22	SIZE	PART NUMBER:	432-215257	0
XXXL .010	ANGLE 2°	APPRD	SNT	DATE	26-May-22	B			

THIS DRAWING IS PROVIDED ON A CONFIDENTIAL BASIS SUBJECT TO RETURN ON DEMAND BY MB COMPANIES. MB COMPANIES RETAINS ANY AND ALL RIGHTS ASSOCIATED WITH IT AND THE ARTICLE OR ARTICLES IT REPRESENTS. NO PART OF THIS DRAWING OR MANUFACTURE, USE OR SALE OF THE ARTICLE OR ARTICLES REPRESENTED, IS PROHIBITED WITHOUT THE PRIOR WRITTEN AUTHORIZATION OF MB COMPANIES.

WT (±2%):427 LBS

2

1



ZONE	REV	CN	DESCRIPTION	BY	DATE

THIS DRAWING IS PROVIDED ON A CONFIDENTIAL BASIS SUBJECT TO RETURN ON DEMAND BY MB COMPANIES. MB COMPANIES RETAINS ANY AND ALL RIGHTS ASSOCIATED WITH IT AND THE ARTICLE OR ARTICLES IT REPRESENTS. DISCLOSURE, REPRODUCTION OR ALTERATION OF ANY PART OF THIS DRAWING, OR MANUFACTURE, USE OR SALE OF THE ARTICLE OR ARTICLES REPRESENTED, IS PROHIBITED WITHOUT THE PRIOR WRITTEN AUTHORIZATION OF MB COMPANIES.

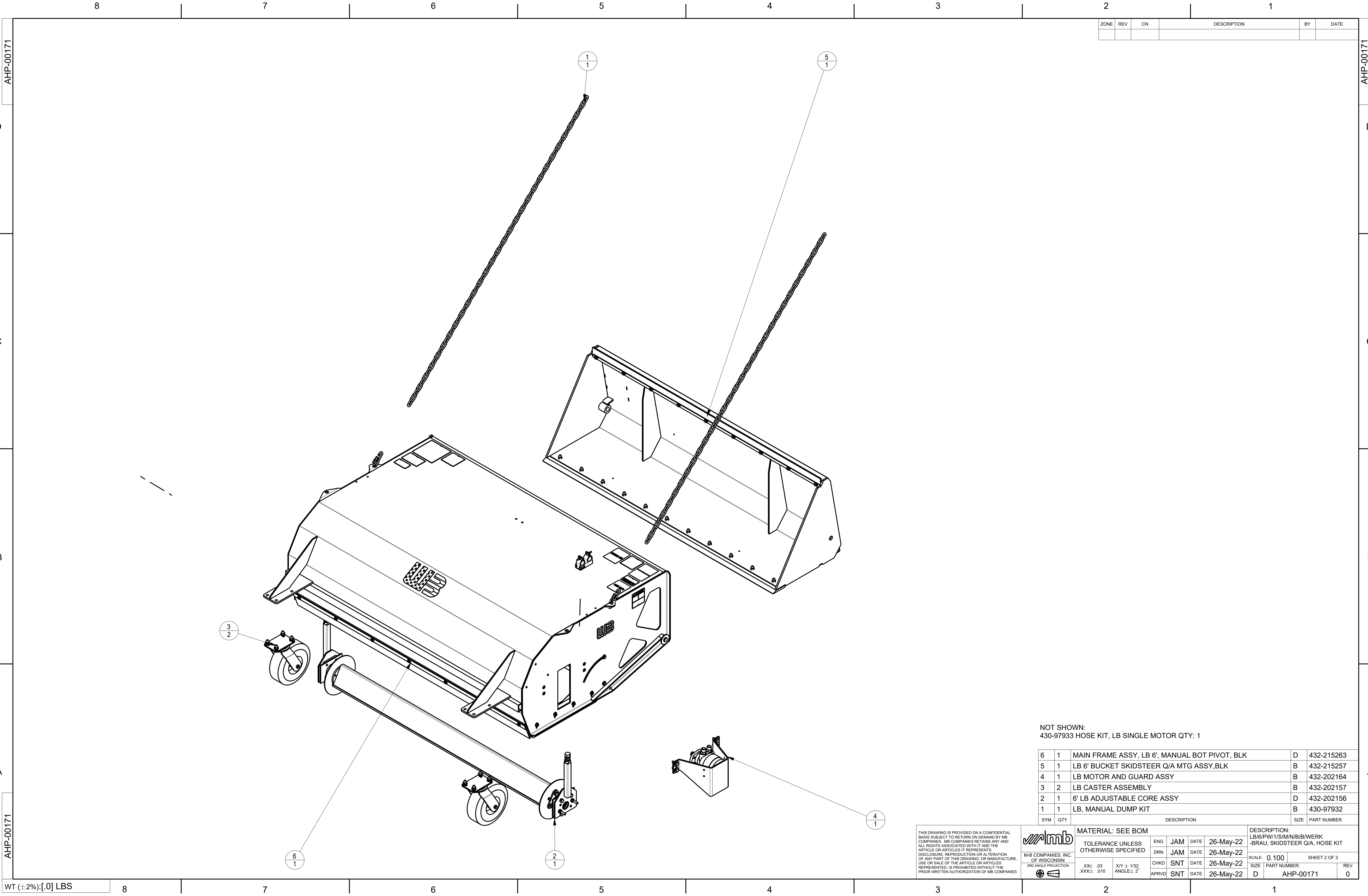


MATERIAL: SEE BOM
TOLERANCE UNLESS OTHERWISE SPECIFIED
.XX±: .03
.XXX±: .010
X/Y ± 1/32
ANGLE±: 2°

ENG	JAM	DATE	26-May-22
DRN	JAM	DATE	26-May-22
CHKD	SNT	DATE	26-May-22
APRVD	SNT	DATE	26-May-22

DESCRIPTION: LB/6/PW/1/S/M/N/B/B/WERK -BRAU, SKIDSTEER Q/A, HOSE KIT	
SCALE: 0.250	SHEET 1 OF 3
SIZE: D	PART NUMBER: AHP-00171
	REV: 0

WT (±2%):[.0] LBS



NOT SHOWN:
430-97933 HOSE KIT, LB SINGLE MOTOR QTY: 1

6	1	MAIN FRAME ASSY, LB 6', MANUAL BOT PIVOT, BLK	D	432-215263
5	1	LB 6' BUCKET SKIDSTEER Q/A MTG ASSY,BLK	B	432-215257
4	1	LB MOTOR AND GUARD ASSY	B	432-202164
3	2	LB CASTER ASSEMBLY	B	432-202157
2	1	6' LB ADJUSTABLE CORE ASSY	D	432-202156
1	1	LB, MANUAL DUMP KIT	B	430-97932

SYM	QTY	DESCRIPTION	SIZE	PART NUMBER
MATERIAL: SEE BOM				
TOLERANCE UNLESS OTHERWISE SPECIFIED				
ENG	JAM	DATE	26-May-22	
DRN	JAM	DATE	26-May-22	
CHKD	SNT	DATE	26-May-22	
APRVD	SNT	DATE	26-May-22	
SCALE: 0.100				SHEET 2 OF 3
SIZE PART NUMBER:				REV
D	AHP-00171			0

THIS DRAWING IS PROVIDED ON A CONFIDENTIAL BASIS SUBJECT TO RETURN ON DEMAND BY MB COMPANIES. MB COMPANIES RETAINS ANY AND ALL RIGHTS ASSOCIATED WITH IT AND THE ARTICLE OR ARTICLES IT REPRESENTS. DISCLOSURE, REPRODUCTION OR ALTERATION OF ANY PART OF THIS DRAWING, OR MANUFACTURE, USE OR SALE OF THE ARTICLE OR ARTICLES REPRESENTED, IS PROHIBITED WITHOUT THE PRIOR WRITTEN AUTHORIZATION OF MB COMPANIES.

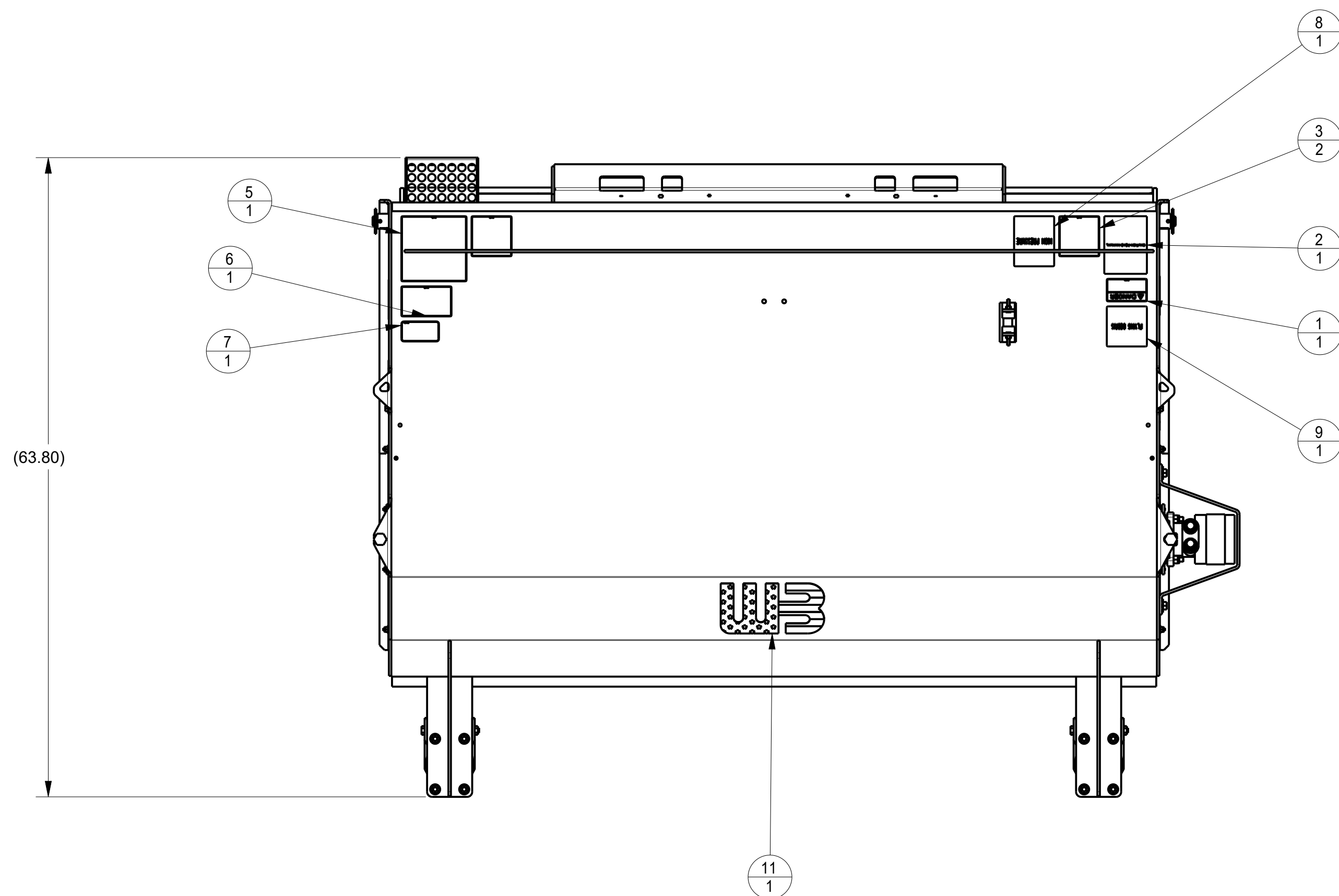
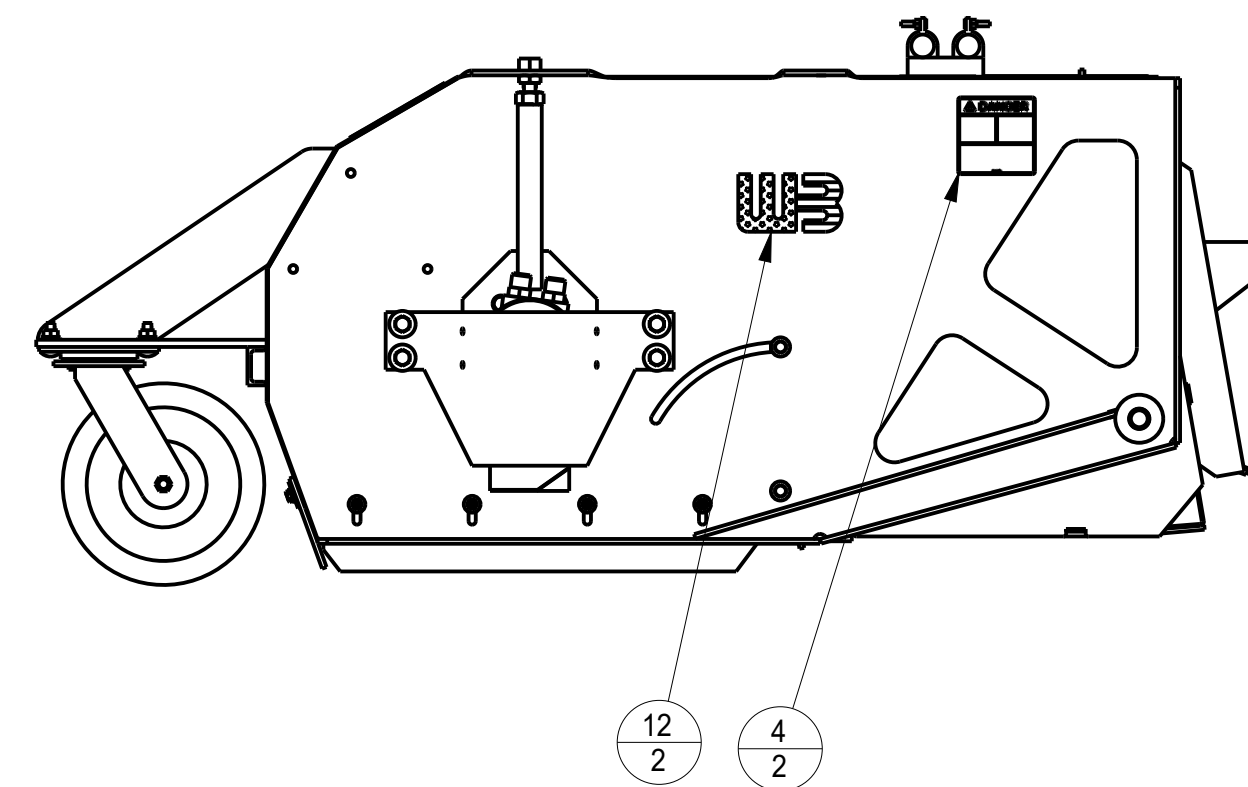
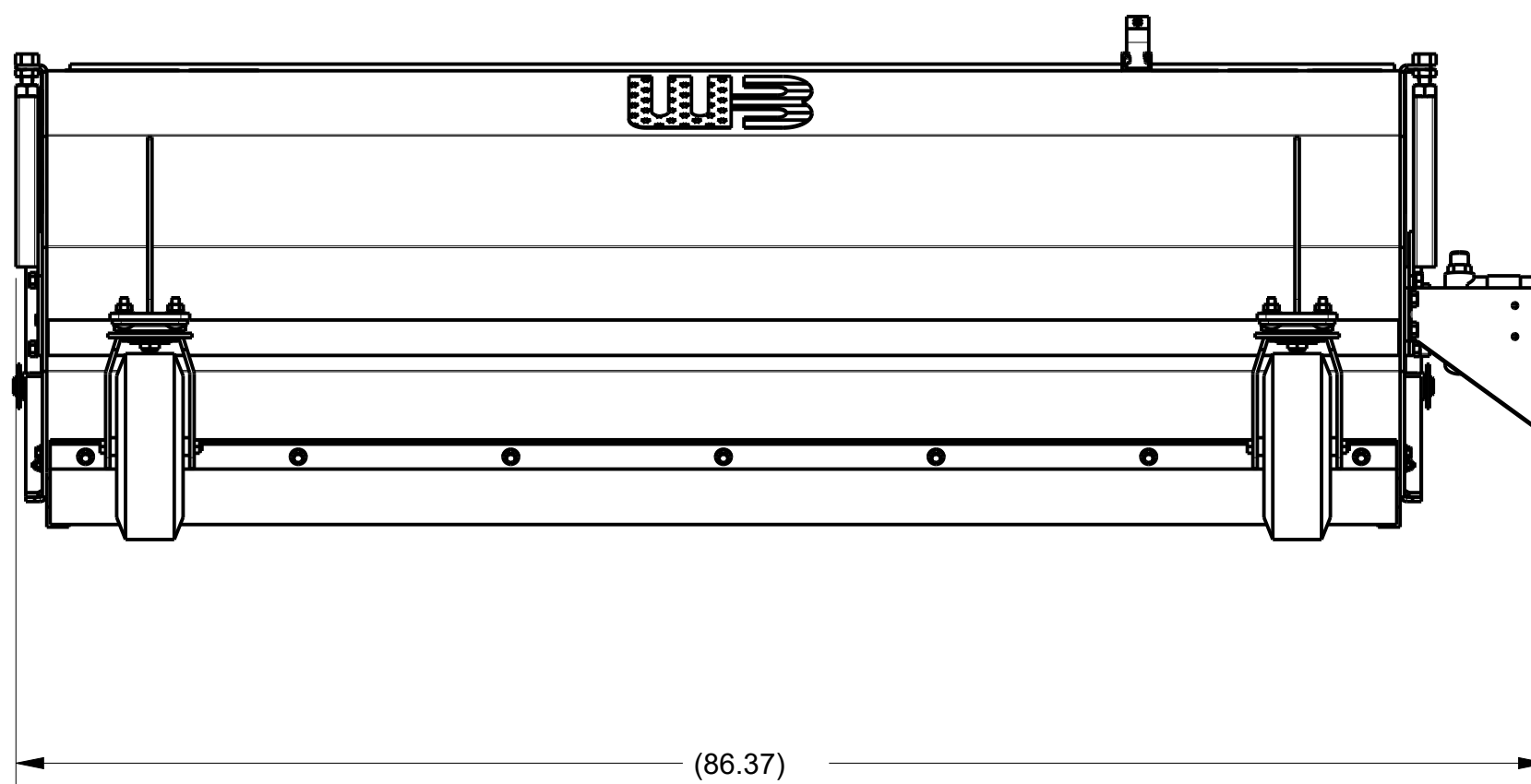
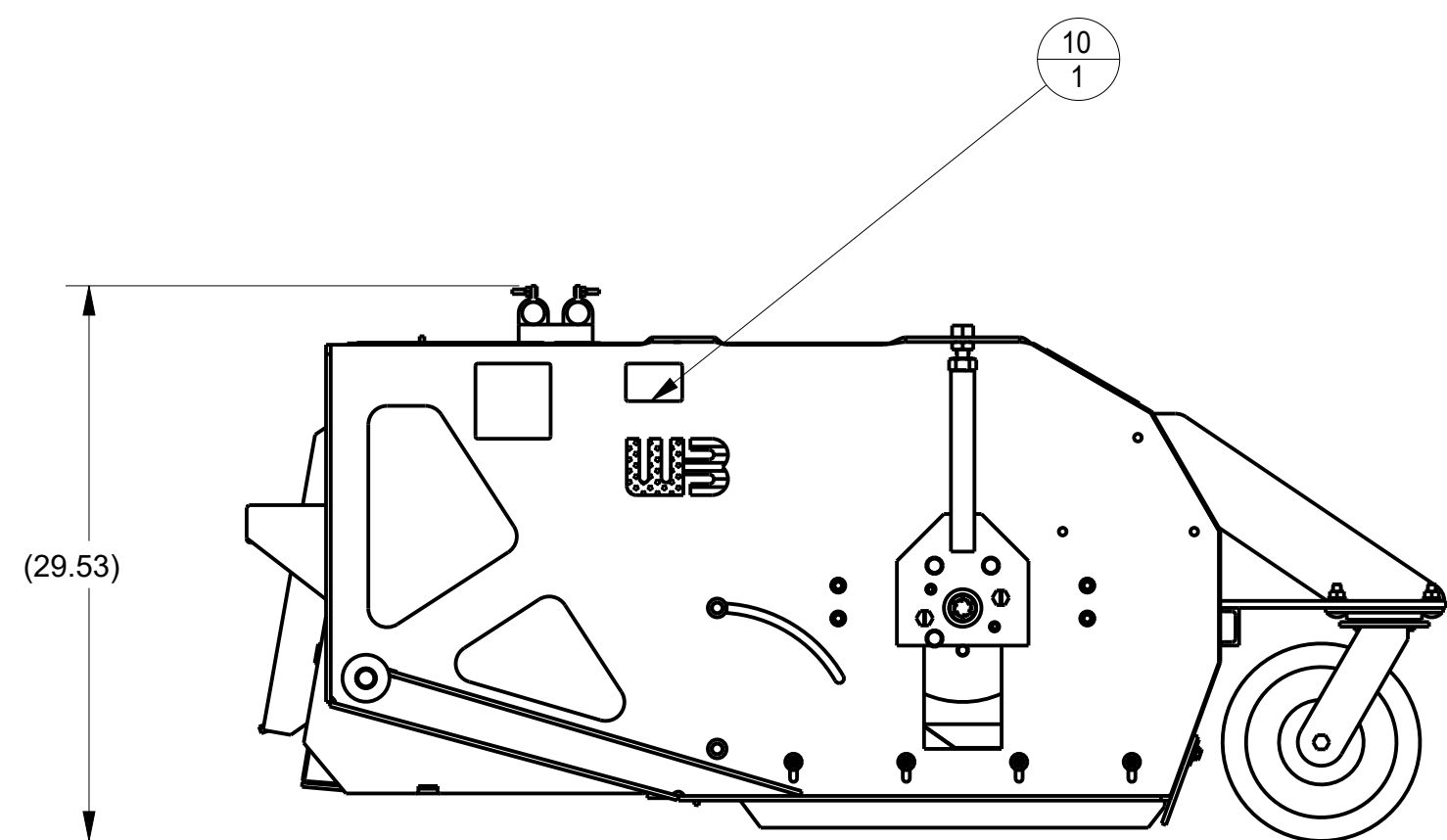


M-B COMPANIES, INC.
OF WISCONSIN
3RD ANGLE PROJECTION



XXL: .03
XXXL: .010
X/Y ± 1/32
ANGLE ± 2°

DESCRIPTION:
LB/6/PW/1/S/M/N/B/B/WERK
-BRAU, SKIDSTEER Q/A, HOSE KIT

ZONE	REV	CN	DESCRIPTION	BY	DATE



12	2	WERK BRAU USA DECAL SMALL	B	390-215209
11	1	WERK BRAU USA DECAL MEDIUM	B	390-215208
10	1	WERK BRAU SERIAL NUMBER DECAL	A	390-215202
9	1	WARNING LABEL FLYING DEBRIS	A	390-169222
8	1	WARNING LABEL HIGH PRESSURE FLUID	A	390-169221
7	1	DECAL, MADE IN THE USA	A	390-140501
6	1	DECAL BRUSH REFILL	A	390-118355
5	1	DECAL BRUSH PATTERN WIDTH	B	390-118354
4	2	DECAL DANGER PINCHING	A	390-118353
3	2	DECAL WARNING GUARDS	X	390-118352
2	1	CAUTION READ MANUAL LABEL, SMALL		390-118351
1	1	DECAL DANGER NO RIDERS	A	390-118349
SYM	QTY	DESCRIPTION	SIZE	PART NUMBER

<p>THIS DRAWING IS PROVIDED ON A CONFIDENTIAL BASIS SUBJECT TO RETURN ON DEMAND BY MB COMPANIES. MB COMPANIES RETAINS ANY AND ALL RIGHTS ASSOCIATED WITH IT AND THE ARTICLE OR ARTICLES IT REPRESENTS. DISCLOSURE, REPRODUCTION OR ALTERATION OF ANY PART OF THIS DRAWING, OR MANUFACTURE, USE OR SALE OF THE ARTICLE OR ARTICLES REPRESENTED, IS PROHIBITED WITHOUT THE PRIOR WRITTEN AUTHORIZATION OF MB COMPANIES</p>	<div><p>M-B COMPANIES, INC. OF WISCONSIN 3RD ANGLE PROJECTION</p><div></div></div>	MATERIAL: SEE BOM				DESCRIPTION: LB/6PW/1/IS/MN/B/B/WERK B/PAU, SKIDSTEER Q/A, HOSE KIT							
		TOLERANCE UNLESS OTHERWISE SPECIFIED				ENG	JAM	DATE	26-May-22				
						CHN	JAM	DATE	26-May-22				
						DRK	SNT	DATE	26-May-22				
						APRVD	SNT	DATE	26-May-22				
		XXX: 03 XY Z ± 1/32 .001: 010 ANGLE ± .2						SCALE: 0.100	SHEET 3 OF 3				
								SIZE:	PART NUMBER:		REV		
								D	AHP-00171		0		

WT ($\pm 2\%$):[.0] LBS