

# OPERATOR'S MANUAL

Model WFLB

Hydraulic Pickup Broom



AHP-00173 WFLB



WB© WERK-BRAU CO., INC.  
FINDLAY, OH USA  
1-800-537-9561  
MANUFACTURED BY M-B COMPANIES, INC.  
NEW HOLSTEIN, WI USA  
1-800-558-5800



# TABLE OF CONTENTS

## INTRODUCTION

General.....	2
Operator's Manual.....	2
Identification Numbers .....	2

## SAFETY

Safety Alerts .....	3
Safety Decals .....	3
Pre-Start Guidelines.....	3
Operation Guidelines .....	3
Maintenance Guidelines .....	4

## SETUP AND ADJUSTMENTS

Setup.....	5
Mounting.....	5
Leveling .....	5

## OPERATION

Pre-Startup Checks.....	6
Operation.....	6

## MAINTENANCE

Maintenance Schedule .....	7
Lubrication .....	7
Filler Replacement .....	7
Core Removal .....	7
Brush Removal .....	8
Brush Installation.....	8
Core Installation .....	8

## STORAGE .....9

## TROUBLESHOOTING .....9

## SPECIFICATIONS.....10

## WARRANTY.....11

## REPLACEMENT BRUSH GUIDE.....12

## PARTS BREAKDOWNS CAN BE FOUND IN THE BACK OF THIS MANUAL

# INTRODUCTION

## GENERAL

The WFLB Model brooms are hydraulically-driven.

A quick hitch is used to connect to the prime mover.

## OPERATOR'S MANUAL

You must read, understand and comply with all the safety and operating instructions in this manual before attempting to set-up and operate your power broom.

Failure to comply with the safety and operating instructions can result in loss of machine control, serious personal injury to you and/or bystanders and risk of equipment and property damage.

## IDENTIFICATION NUMBERS

When contacting your authorized dealer for information, replacement parts or service, you **MUST** have the model and serial number of your unit.

Record the serial number in the space provided. The serial number plate/decals can be found in the location shown in Figure 1.

Model Name/Number	
Date Purchased:	Serial #:



Figure 1.

# SAFETY

## SAFETY ALERTS

Signal words and alert symbols notify of important safety precautions.



**Indicates a hazardous situation which, if not avoided, will result in serious injury or death.**



**Indicates a hazardous situation which, if not avoided, could result in serious injury or death.**



**Indicates a hazardous situation or unsafe practice which, if not avoided, could result in minor or moderate injury or property damage.**

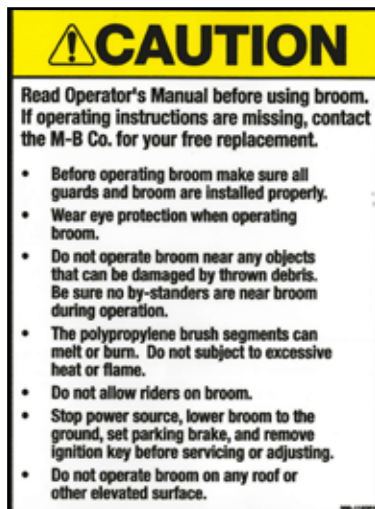
## SAFETY DECALS

Although reading this manual and the safety instructions it contains will provide you with the necessary basic knowledge to operate this equipment safely and effectively, we have placed several safety labels on the unit to remind you of this important information while you are operating your unit.

All DANGER, WARNING, CAUTION, and instructional messages on your unit should be carefully read and obeyed. Bodily injury can result when these instructions are not followed. The information is for your safety and it is important.

These labels will act as a constant visual reminder to you, and others who may use the equipment, to follow the safety instructions necessary for safe, effective operation.

If any of these labels are lost or damaged, replace them at once. See your local dealer for replacements.



## PRE-START GUIDELINES

- Install any covers or guards which may have been removed for shipping purposes.
- Before starting equipment, walk around equipment, making a visual inspection that all safety devices are properly installed and secured.
- Check that all hardware, fasteners, hydraulic fittings, etc. are in good condition and properly fastened. Replace any fatigued or damaged items with proper replacements.
- Personnel who are not required to be in the work area should be kept away. Never start the equipment unless you are absolutely certain that everyone in the area is clear of the machine and aware it is being started.
- Follow the manufacturer's recommended start-up procedure.

## OPERATION GUIDELINES

Read, understand and follow all instructions in the manual and on the unit before starting.

NOTE: All reference to left, right, front or rear are given from the operator position and facing forward.

- To avoid serious injury or death, do not modify equipment. Any modifications made to equipment can be dangerous and can void equipment warranty.
- Never defeat a safety device to make a task easier.
- Always wear proper apparel when operating equipment; safety glasses, face shield or goggles, ear protection, and dust mask. Tie hair back. Never wear loose clothing or jewelry that could get caught in moving parts.
- Never operate equipment with covers or guards removed. Rotating parts can cause severe injury. Keep hands, feet, hair, jewelry and clothing away from all moving parts.
- Only allow responsible adults who are familiar with the instructions, to operate the unit (local regulations can restrict operator age).
- Clear the area of objects such as rocks, toys, wire, etc., which could be picked up and thrown.
- Be aware of surroundings. Be sure the area is clear of other people, bystanders or pets. Stop unit if anyone enters the area.

# SAFETY

- Always look down and behind before and while traveling in reverse.
- Be aware of discharge direction and do not point discharge at anyone. Do not point the discharge at glass enclosures, automobiles, or windows.
- Always stand clear of the discharge area when operating this unit.
- Disengage all clutches and PTOs before starting engine.
- Never leave a running machine unattended. Always disengage the attachment and traction controls, lower the attachment, set the park brake, stop the engine and remove the ignition key before leaving the machine.
- Operate only in daylight or good artificial light.
- Never carry passengers.
- Do not operate the unit while under the influence of drugs, alcohol or other medication.
- Watch for traffic when operating near or crossing roadways.
- Use extra care when loading or unloading the unit into a trailer or truck.
- Keep in mind the operator is responsible for accidents occurring to other people or property.
- Data indicates that operators, age 60 years and above, are involved in a large percentage of power equipment-related injuries. These operators should evaluate their ability to operate the unit safely enough to protect themselves and others from injury.
- All operators should seek and obtain professional and practical instruction.
- Protect eyes, face and head from objects that may be thrown from unit. Wear appropriate hearing protection.
- Always wear substantial footwear and appropriate clothing. Wear footwear that improves traction on slippery slopes. DO NOT wear long scarves or loose clothing that could become entangled in moving parts.
- Abnormal Vibrations are a warning of trouble. Striking a foreign object can damage unit. Stop unit and engine. Wait for all moving parts to stop. Inspect unit and make any necessary repairs before restart.
- Never place your hands or any part of your body or clothing inside or near any moving part while unit is running.
- Stop engine before: refueling, cleaning, making adjustments or removing the attachment assembly.
- Follow the drive unit manufacturer's recommendations for wheel weights or counter weights.
- Make any adjustments before operating unit.
- Do not touch parts which may be hot from operation. Allow such parts to cool before attempting to service the unit.
- Before using, always visually check that hardware is present, intact and secure. Replace worn or damaged parts.
- Never operate the machine with damaged guards, or without safety protective devices in place.
- Follow the manufacturer's recommendations for towing weight restrictions and procedures.
- Original purchaser of this unit was instructed by the seller on safe and proper operation. If unit is to be used by someone other than original purchaser; loaned, rented or sold, ALWAYS provide this manual and any needed safety training before operation.
- The Operator must understand the functions and parameters of all controls and how to operate, as well as how to STOP in an Emergency.

## MAINTENANCE GUIDELINES

- Maintain or replace safety and instruction decals/labels as necessary.
- Never run a unit in an enclosed area.
- Keep nuts and bolts tight and keep equipment in good condition
- Never tamper with safety devices. Check their proper operation regularly and make necessary repairs if they are not functioning properly.
- Keep unit free of debris and build-up. Clean up any oil spillage.
- Never make adjustments or repairs with the engine running unless specified otherwise in the engine manufacturer's manual.
- Components are subject to wear, damage, and deterioration. Frequently check components and replace with the manufacturer's recommended parts, when necessary.
- Check control operation frequently. Adjust and service as necessary.
- Use only factory authorized parts when making repairs.
- Always comply with factory specifications on all settings and adjustments.
- Only authorized service locations should be utilized for major service and repair requirements.
- Never attempt to make your own repairs on this unit unless you have been properly trained. Improper service procedures can result in hazardous operation, equipment damage and voiding the manufacturer's warranty.
- Stop engine on tractor and set parking brake before performing any adjustments on the machinery.
- Do not disassemble a pressurized system unless properly trained and equipped with adequate tooling.
- Escaping hydraulic fluid under pressure can have sufficient force to penetrate the skin, causing serious injury. Before operation, be sure that all hydraulic connections are tight and hoses are not damaged. Relieve pressure in system before making adjustments.
- Oils and fluids can be very hot under pressure. Use caution and allow the system to cool before beginning maintenance work.
- Never operate or pressurize one of these systems with worn or damaged components. Replace hoses, fittings, valves or other components which appear defective.
- Never adjust pressurized systems beyond recommended levels to achieve higher operating pressures.
- NEVER search for hydraulic leaks with only your hands. Use cardboard or a piece of wood.
- For engine equipped models, follow specific engine manufacturer's recommended service intervals for dirty/dusty environments.

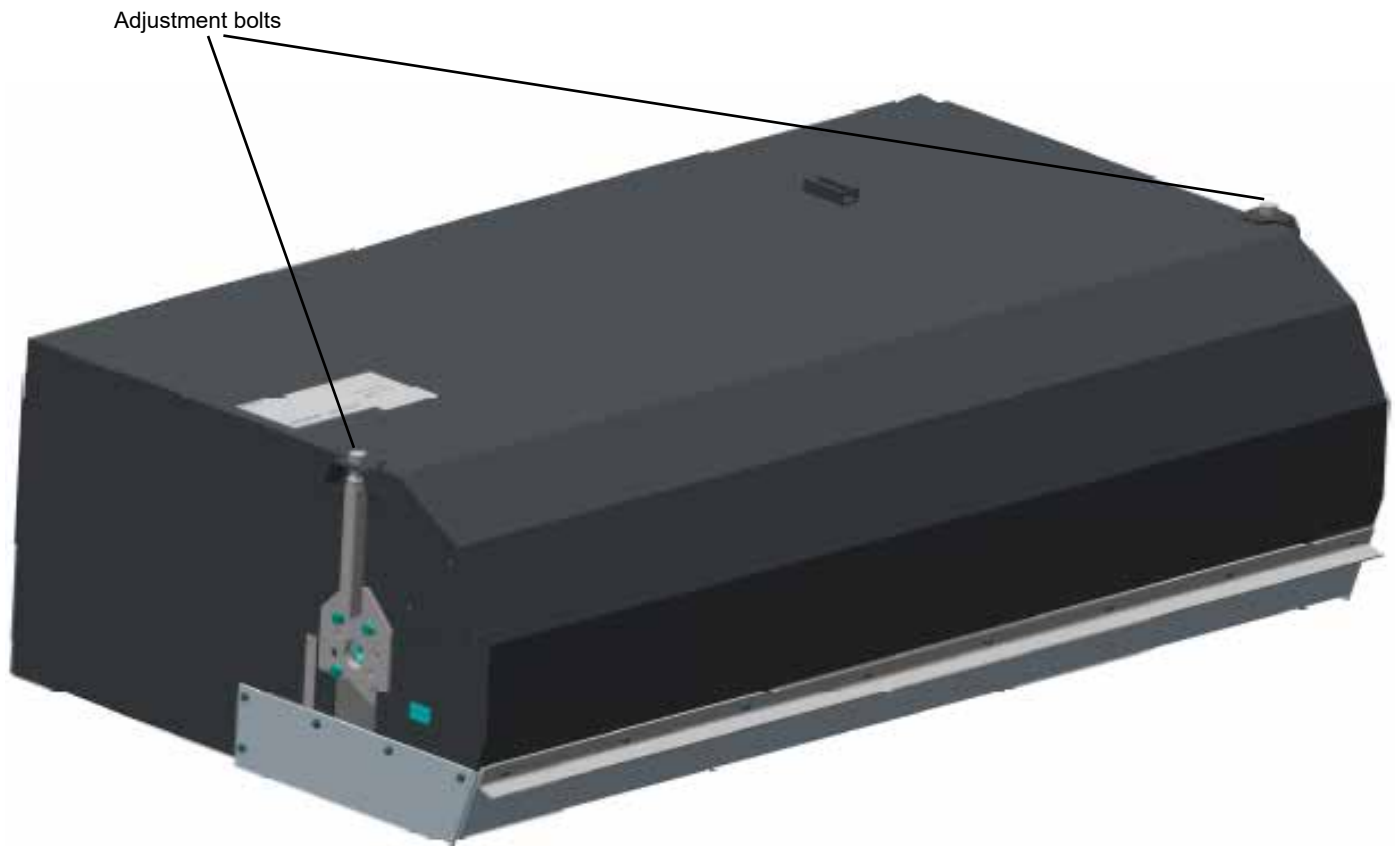
# SETUP AND ADJUSTMENTS

## SETUP

Proper setup and leveling of your power broom will increase the life of the brush and produces more efficient movement of material. Visually inspect the adjustments on the broom before each operating session and measure the adjustments once every 10 hours.

## PATTERN ADJUSTMENT

- With the broom and skid steer on a level surface, set the bottom of the bucket down flat and then raise it up approximately 1" to the operating location.
- Turn the adjustment bolts on each side of the machine until the brush pattern is approximately 2"-4" from front to rear. (See figure 1)
- Once this adjustment is set, it can be confirmed by running the unit for about 30 seconds in the down position while stationary. Stop the broom and back the unit away. The 'cleaned' portion of the surface should be 2"-4".



# OPERATION

## PRE-START CHECKS

**IMPORTANT!** You must read, understand and comply with all the safety and operating instructions in this manual before attempting to set-up and operate the broom. Failure to comply with the safety and operating instructions can result in loss of machine control, serious personal injury to you and/or bystanders, and risk of equipment and property damage.

1. Visually inspect equipment and mounting hardware to ensure that all parts are secure and tightened properly.
2. Check for oil leaks and loose hose connections.
3. Inspect the room adjustments to ensure that the broom is level and that the brush pattern is set properly. Refer to the **SETUP AND ADJUSTMENT** section of this manual.
4. Inspect the bristle length to determine if segments need to be replaced.

## OPERATION IMPORTANT!

- Sweep at a speed that is appropriate for the conditions and location.
- For heavy material such as gravel or stones, drive more slowly with a higher broom speed. For lighter material, drive faster with a lower broom speed.
- It may be necessary to increase broom contact pattern under some conditions. If the surface being swept is uneven and causes the broom to leave upswept patches, increase the pattern size to compensate.
- If the material being swept is dried-on or difficult to remove, such as mud or ice, it may be necessary to drive extremely slow to allow the broom to “scrub” the surface.



# MAINTENANCE

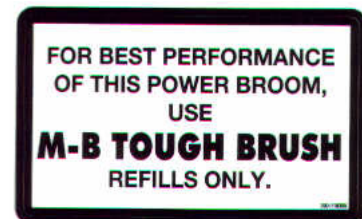
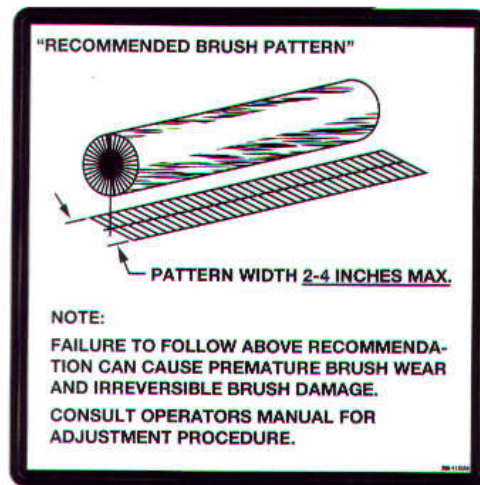
## MAINTENANCE SCHEDULE

- Check adjustments – every 10 hours
- Grease bearings – every 10 hours
- Grease pivot points – every 50 hours
- Check and refill oil level – every 50 hours

**NOTE:** Grease points are noted with an applicable decal.

## LUBRICATION

- Grease bearings and pivot points per the MAINTENANCE SCHEDULE using Chevron Ultra Duty II, Grade 2; or equivalent high-temp grease.
- There are minimum of (13) grease points on the unit; (4) on the brush frame horizontal tubes, (2) on the brush frame caster wheel tubes, (2) on the caster wheel hubs, (3) on the pivot frame, and (2) on the brush core support bearings.
- Use an ISO 32 or greater hydraulic fluid, dependent upon operating temperatures, for M-B supplied independent hydraulic systems. If the oil is supplied by the prime mover, use the prime mover manufacturer's recommended fluid.



# MAINTENANCE

## FILLER REPLACEMENT

### Core Removal

- Raise the broom off the ground approximately 6"
- Remove the adjustment bolts on both sides of the broom.
- Remove the motor and adjustment bracket from the left side.
- Remove the adjustment bracket from the right side.
- Slide the core and bearings down and out of the bottom of the broom



## BRUSH REMOVAL

- Remove (3) ½" bolts attaching splined hub to end of core. Remove hub and set aside.
- Remove (3) or (4) bolts attaching wafer retainer plate (end disc) to end of core. Set retainer and hardware aside.
- Slide spent filler and spacers off core and discard.



## BRUSH INSTALLATION

- Stand core in upright position and begin filling the core by sliding an individual segment and spacer down the full length of the core starting with a poly segment. Note the location of the drive pin on the inside ring of each segment. Be sure to rotate each segment so the position of the pin is on a different side of the core with each segment being installed. This will help to insure proper balance on the core.
- Continue stacking the core in a segment-spacer, segment-spacer configuration until it is full ending with a segment. Always start and finish with a poly segment.
- The last segment should actually extend beyond the end of the core (Minimum ½") so when the end disc is installed it compresses the filler onto the core when the bolts are tightened.
- Install end disc to the end of the core and secure with original bolts.
- Reinstall splined hub and bearing.

## CORE INSTALLATION

- Position refilled core in front of the broom head. Lift the broom head high enough to place the filled core back into its original position. Once in place, lower broom head down onto the pillow block bearing at each end of the core.
- Reverse steps 2 – 4 from core removal section to complete reinstallation. Note: Apply grease or anti-seize to splines before installing hydraulic motors.
- Before placing machine back into service, adjust and test for proper amount of brush pattern. Excessive pattern can cause brush failure or premature wear.

# STORAGE

## STORAGE

- Always store the broom in a supported position, on its included stands, with the brush off the ground. If the bristles are stored in a deformed position for extended periods of time the broom will become severely out of balance.
- Store the broom in a location out of the sun and weather to prevent premature failure of plastic bristles. Bristles can become brittle when subjected to sunlight or repeated temperature changes.
- Disconnect all electrical connections between the broom and prime mover (mower/loader/tractor) for extended storage to prevent battery drain.
- Properly clean the unit before storage and remove dirt, debris, salt, etc. to extend paint life.
- If the unit is power-washed, all lubrication points should be greased before storage.

# TROUBLESHOOTING

Trouble	Possible Cause	Remedy
Broom does not rotate.	<ol style="list-style-type: none"> <li>1. No hydraulic pressure/flow.</li> <li>2. Hoses disconnected.</li> <li>3. Hoses bent or kinked.</li> <li>4. Pressure relieving too low.</li> <li>5. Electric valve not functioning.</li> </ol>	<ol style="list-style-type: none"> <li>1. Check tractor operation.</li> <li>2. Connect hoses and fittings.</li> <li>3. Remove sharp bends and kinks.</li> <li>4. Adjust relief valve.</li> <li>5. Check electrical connections.</li> </ol>
Broom rotates in wrong direction.	<ol style="list-style-type: none"> <li>1. Hoses installed incorrectly.</li> </ol>	<ol style="list-style-type: none"> <li>1. Switch hydraulic hose connections</li> </ol>
Brushes wearing very quickly.	<ol style="list-style-type: none"> <li>1. Brush pattern too wide.</li> </ol>	<ol style="list-style-type: none"> <li>1. Adjust brush pattern to be 2-4" wide. Refer to the Set-up and Adjustments section of this manual.</li> </ol>
Broom bounces during sweeping.	<ol style="list-style-type: none"> <li>1. Travel speed too fast and/or brush speed too slow.</li> </ol>	<ol style="list-style-type: none"> <li>1. Adjust to find correct ground and brush speed for surface.</li> </ol>
Broom sweeping poorly.	<ol style="list-style-type: none"> <li>1. Material is 'caked-on' or frozen.</li> <li>2. Uneven sweeping surface.</li> <li>3. Material is too heavy.</li> <li>4. Broom rotating too slowly.</li> <li>5. Prime mover moving too fast.</li> <li>6. Pattern incorrectly set.</li> </ol>	<ol style="list-style-type: none"> <li>1. Slow down and 'scrub' surface.</li> <li>2. Increase pattern to compensate.</li> <li>3. Slow down prime mover speed.</li> <li>4. Increase engine speed.</li> <li>5. Slow down prime mover speed.</li> <li>6. Adjust height of broom.</li> </ol>

# NOTES

# Warranty/Product Registration

**A Warranty Registration Form must be submitted online to make warranty effective.**

**Warranty Start Date:**

All claims must be submitted using the proper form and emailed to [mbattachments@aebi-schmidt.com](mailto:mbattachments@aebi-schmidt.com).

To be eligible for warranty payment the product must be registered with M-B Companies via

[www.m-bco.com/warranty](http://www.m-bco.com/warranty)

M-B Companies, Inc. reserves the right to decline any claim that does not meet above requirements.

Pre-Approval Required Prior To ANY Work Being Performed.

## LIMITED WARRANTY

Limited Warranty: Subject to the limitations set forth herein, M-B Companies, Inc. ("M-B") warrants its products to be free from defects in material and workmanship for a period of twelve (12) months from the date of delivery of the product to its original owner, except that the warranty is twelve (12) months solely for the following products: Truck Mounted Pavement Marking Equipment, Airport Snow Removal Products, Attachment Products, Brushes. Parts shall have a ninety (90) day warranty. This warranty is not transferable without the written consent of M-B.

Notice: M-B's obligations under this Limited Warranty are conditioned on M-B receiving, within the warranty period, written notice from Buyer specifying the nature of any alleged defect and requesting corrective action by Seller.

Remedies: M-B, at its option, will repair or replace, or provide a credit to Buyer for, defective warranted items. If requested by M-B, products or parts for which a warranty claim is made shall be returned, transportation prepaid, to M-B's factory. Buyer shall not return any product for repair, replacement or credit without M-B's advance written consent.

Other Manufacturer's Warranty: On products furnished by M-B, but manufactured by any other manufacturer, the warranty of said manufacturer, if any, will be assigned to Buyer, if the said warranty is assignable. However, M-B does not represent or guarantee that such manufacturer will comply with any of the terms of the warranty of such manufacturer.

Exclusions: Any improper use, operation beyond capacity, or substitution of parts not approved by M-B, or alteration or repair by others in such a manner

as in M-B's judgment materially and/or adversely affects the product shall void this warranty. This warranty does not apply to defects caused by damage or unreasonable use while in the possession of the owner, including but not limited to: failure to provide reasonable and necessary maintenance, normal wear, routine tune ups or adjustments, improper handling or accidents, operation at speed or load conditions contrary to published specifications, improper or insufficient lubrication, or improper storage.

Seller manufactures power brooms that mount to many makes and models of equipment. Seller attempts to ensure that the mounting frames fit correctly. However, the large number of tractor models, types and options currently available, compounded by frequent manufacturer design changes, may prevent Seller from supplying a frame that fits every unit correctly. Therefore, unless Buyer supplies drawing which detail the attachment points on the specific unit to which the broom will be mounted, Seller will not be responsible for the fit of the mounting frame.

The batteries, tires, rubber material, brushes and material normally consumed in operation, and major components such as engines, air compressors, and hydraulic pumps and motors are excluded from this warranty but may be covered to the extent of any warranty received by M-B from its supplier if permitted by the terms of such warranty.

Limitations of liability: M-B shall not be liable for any incidental, consequential, punitive or special damages of any kind, including, but not limited to,

consequential labor costs or transportation charges in connection with the repair or replacement of defective parts, or lost time profits or expense which may have accrued because of said defect.

M-B disclaims all other warranties, whether express or implied, including but not limited to any implied warranty of merchantability or fitness for a particular purpose. This warranty is exclusive remedy of buyer. This warranty cannot be extended, broadened or changed in any respect except in writing by an authorized officer of M-B.

Notwithstanding anything in this warranty is to the contrary, in no event shall M-B's total liability hereunder exceed the purchased price of the particular product.

# REPLACEMENT BRUSH KITS

## Part Number

907-63474

907-64664

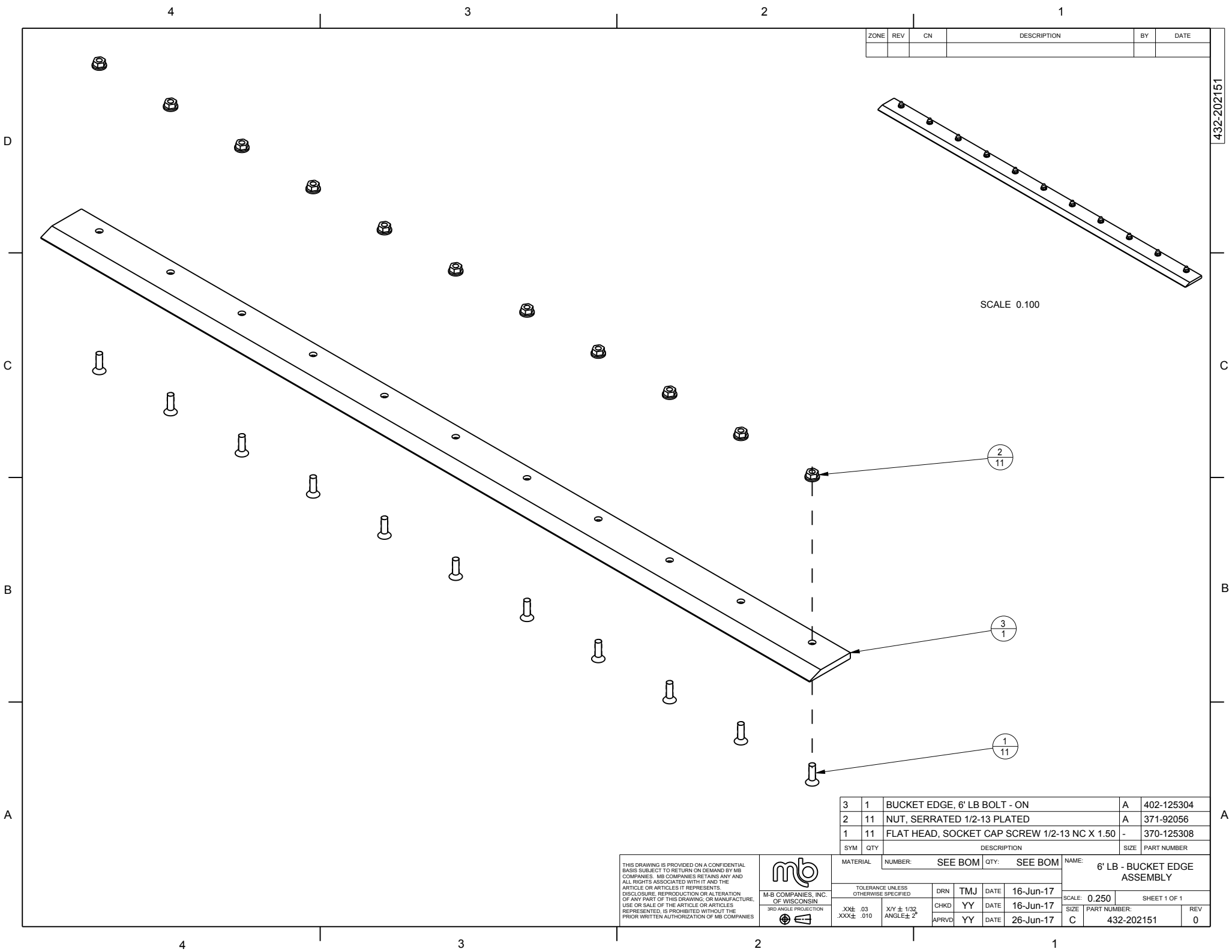
## Description

REFILL, 25 IN. X 7 FT. ,WAFER,COMBO

REFILL, 25 IN. X 6 FT. ,WAFER,COMBO



WB© WERK-BRAU CO., INC.  
FINDLAY, OH USA  
1-800-537-9561  
MANUFACTURED BY M-B COMPANIES, INC.  
NEW HOLSTEIN, WI USA  
1-800-558-5800



ZONE	REV	CN	DESCRIPTION	BY	DATE

SCALE 0.100

3	1	BUCKET EDGE, 6' LB BOLT - ON	A	402-125304
2	11	NUT, SERRATED 1/2-13 PLATED	A	371-92056
1	11	FLAT HEAD, SOCKET CAP SCREW 1/2-13 NC X 1.50	-	370-125308
SYM	QTY	DESCRIPTION	SIZE	PART NUMBER

THIS DRAWING IS PROVIDED ON A CONFIDENTIAL BASIS SUBJECT TO RETURN ON DEMAND BY MB COMPANIES. MB COMPANIES RETAINS ANY AND ALL RIGHTS ASSOCIATED WITH IT AND THE ARTICLE OR ARTICLES IT REPRESENTS. DISCLOSURE, REPRODUCTION OR ALTERATION OF ANY PART OF THIS DRAWING, OR MANUFACTURE, USE OR SALE OF THE ARTICLE OR ARTICLES REPRESENTED, IS PROHIBITED WITHOUT THE PRIOR WRITTEN AUTHORIZATION OF MB COMPANIES.



M-B COMPANIES, INC.  
OF WISCONSIN  
3RD ANGLE PROJECTION

MATERIAL	NUMBER:	SEE BOM	QTY:	SEE BOM	NAME:	6' LB - BUCKET EDGE ASSEMBLY
TOLERANCE UNLESS OTHERWISE SPECIFIED		DRN	TMJ	DATE	16-Jun-17	
XX± .03	XY ± 1/32	CHKD	YY	DATE	16-Jun-17	
XXX± .010	ANGLE ± 2°	APRVD	YY	DATE	26-Jun-17	

SCALE: 0.250	SHEET 1 OF 1
SIZE C	PART NUMBER: 432-202151
	REV 0

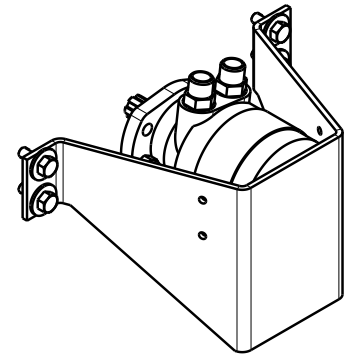
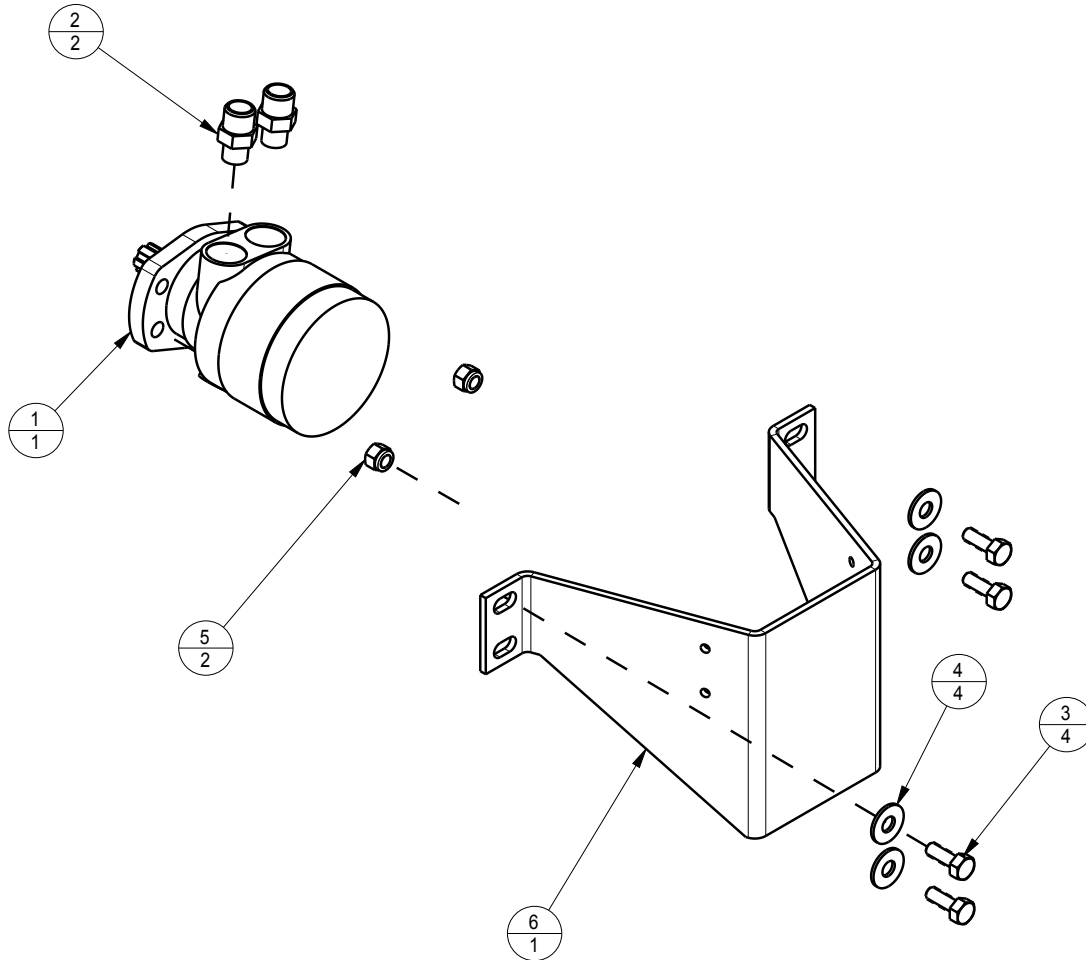


2

1

ZONE	REV	CN	DESCRIPTION	BY	DATE

B



SCALE 0.200

B

A

6	1	GUARD, MOTOR LB/FLB	A	401-126573
5	2	NUT, HEX, ESNA, 1/2-13-UNC	A	371-81417
4	4	WASHER, FLAT -1/2 STD ZINC PL	-	341-50000
3	4	HHCS 1/2-13 UNC X 1.250	A	311-51250
2	2	STR ADPT, MALE 1 1/16 JIC X 7/8 ORB	X	211-51813
1	1	MOTOR, HYDRAULIC 18.3 CU IN	A	201-75209
SYM	QTY	DESCRIPTION	SIZE	PART NUMBER

A

THIS DRAWING IS PROVIDED ON A CONFIDENTIAL BASIS SUBJECT TO RETURN ON DEMAND BY MB COMPANIES. MB COMPANIES RETAINS ANY AND ALL RIGHTS ASSOCIATED WITH IT AND THE ARTICLE OR ARTICLES IT REPRESENTS. DISCLOSURE, REPRODUCTION OR ALTERATION OF ANY PART OF THIS DRAWING, OR MANUFACTURE, USE OR SALE OF THE ARTICLE OR ARTICLES REPRESENTED, IS PROHIBITED WITHOUT THE PRIOR WRITTEN AUTHORIZATION OF MB COMPANIES



M-B COMPANIES, INC.  
OF WISCONSIN

3RD ANGLE PROJECTION



MATERIAL	NUMBER:	SEE BOM	QTY:	SEE BOM
TOLERANCE UNLESS OTHERWISE SPECIFIED				
.XX± .03	X/Y ± 1/32	DRN	TMJ	DATE
.XXX± .010	ANGLE ± 2°	CHKD	YY	DATE
		APRVD	YY	DATE

NAME:		LB MOTOR AND GUARD ASSY		
SCALE:		0.250	SHEET 1 OF 1	
SIZE	PART NUMBER:		REV	
B	432-202164		0	

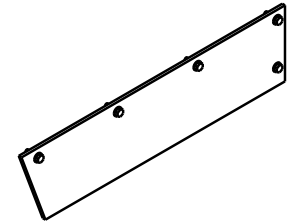
2

1

2

1

ZONE	REV	CN	DESCRIPTION	BY	DATE



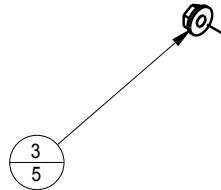
SCALE 0.125

B

B

A

A



3	5	NUT, FLANGED 5/16-18 PLATED LOCKING	X	371-92059
2	5	HHCS SERRATED FLANGE 5/16-18 X 1	X	370-190649
1	1	DEFLECTOR, SIDES	B	101-132288
SYM	QTY	DESCRIPTION	SIZE	PART NUMBER

THIS DRAWING IS PROVIDED ON A CONFIDENTIAL BASIS SUBJECT TO RETURN ON DEMAND BY MB COMPANIES. MB COMPANIES RETAINS ANY AND ALL RIGHTS ASSOCIATED WITH IT AND THE ARTICLE OR ARTICLES IT REPRESENTS. DISCLOSURE, REPRODUCTION OR ALTERATION OF ANY PART OF THIS DRAWING, OR MANUFACTURE, USE OR SALE OF THE ARTICLE OR ARTICLES REPRESENTED, IS PROHIBITED WITHOUT THE PRIOR WRITTEN AUTHORIZATION OF MB COMPANIES

M-B COMPANIES, INC.  
OF WISCONSIN

3RD ANGLE PROJECTION



MATERIAL	NUMBER:	QTY:	NAME:
SEE BOM			FLB LOWER SIDE DEFLECTOR - LH
TOLERANCE UNLESS OTHERWISE SPECIFIED	DRN	TMJ	DATE
.XX± .03 .XXX± .010	CHKD	YY	DATE
X/Y ± 1/32 ANGLE ± 2°	APRVD	YY	DATE
			06-Jun-16
			26-Jun-17
			26-Jun-17
SCALE: 0.375	SHEET 1 OF 1	SIZE	PART NUMBER:
			432-202192
			REV
			0

2

1

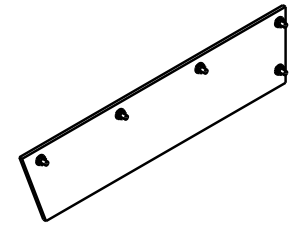
2

1

ZONE	REV	CN	DESCRIPTION	BY	DATE

B

B



SCALE 0.125

A

A

3	5	NUT, FLANGED 5/16-18 PLATED LOCKING	X	371-92059
2	5	HHCS SERRATED FLANGE 5/16-18 X 1	X	370-190649
1	1	DEFLECTOR, SIDES	B	101-132288
SYM	QTY	DESCRIPTION	SIZE	PART NUMBER

THIS DRAWING IS PROVIDED ON A CONFIDENTIAL BASIS SUBJECT TO RETURN ON DEMAND BY MB COMPANIES. MB COMPANIES RETAINS ANY AND ALL RIGHTS ASSOCIATED WITH IT AND THE ARTICLE OR ARTICLES IT REPRESENTS. DISCLOSURE, REPRODUCTION OR ALTERATION OF ANY PART OF THIS DRAWING, OR MANUFACTURE, USE OR SALE OF THE ARTICLE OR ARTICLES REPRESENTED, IS PROHIBITED WITHOUT THE PRIOR WRITTEN AUTHORIZATION OF MB COMPANIES



M-B COMPANIES, INC.  
OF WISCONSIN

3RD ANGLE PROJECTION



MATERIAL	NUMBER:	QTY:	NAME:
SEE BOM			FLB LOWER SIDE DEFLECTOR - RH
TOLERANCE UNLESS OTHERWISE SPECIFIED	DRN	TMJ	DATE
			06-Jun-16
	CHKD	YY	DATE
			26-Jun-17
	APRVD	YY	DATE
			26-Jun-17
SCALE: 0.375	SHEET 1 OF 1		
SIZE	PART NUMBER:	REV	
	432-202193	0	

2

1

2

1

ZONE	REV	CN	DESCRIPTION	BY	DATE

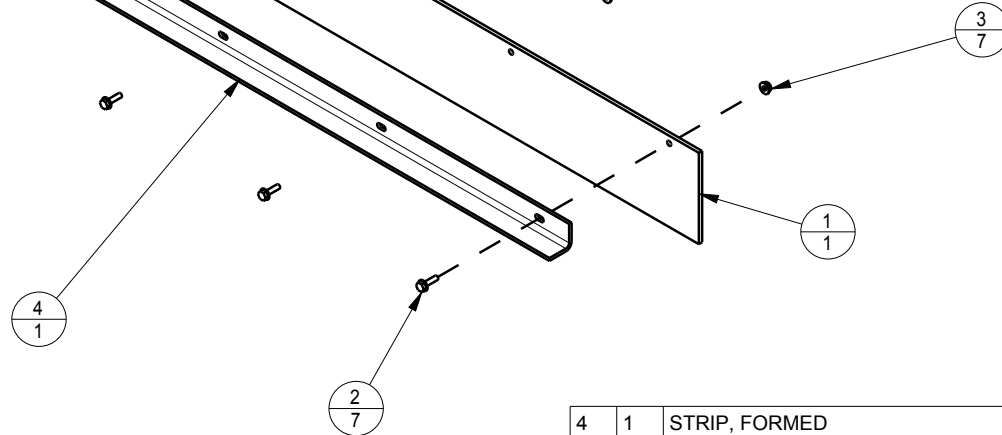
B

B

SCALE 0.050

A

A



4	1	STRIP, FORMED	B	401-132289
3	7	NUT, FLANGED 5/16-18 PLATED LOCKING	X	371-92059
2	7	HHCS SERRATED FLANGE 5/16-18 X 1	X	370-190649
1	1	DEFLECTOR, FRONT	B	101-132287
SYM	QTY	DESCRIPTION	SIZE	PART NUMBER

THIS DRAWING IS PROVIDED ON A CONFIDENTIAL BASIS SUBJECT TO RETURN ON DEMAND BY MB COMPANIES. MB COMPANIES RETAINS ANY AND ALL RIGHTS ASSOCIATED WITH IT AND THE ARTICLE OR ARTICLES IT REPRESENTS. DISCLOSURE, REPRODUCTION OR ALTERATION OF ANY PART OF THIS DRAWING, OR MANUFACTURE, USE OR SALE OF THE ARTICLE OR ARTICLES REPRESENTED, IS PROHIBITED WITHOUT THE PRIOR WRITTEN AUTHORIZATION OF MB COMPANIES



M-B COMPANIES, INC.  
OF WISCONSIN

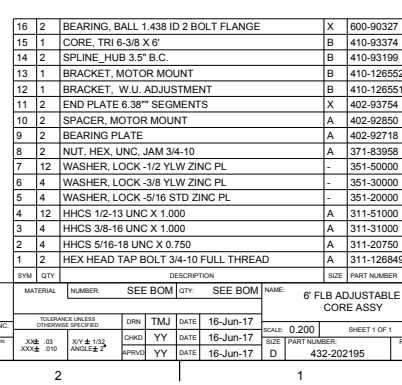
3RD ANGLE PROJECTION



MATERIAL	NUMBER:	QTY:	NAME:
SEE BOM			6' FLB LOWER FRONT DEFLECTOR
TOLERANCE UNLESS OTHERWISE SPECIFIED	DRN	TMJ	DATE
.XX± .03 .XXX± .010	CHKD	YY	DATE
X/Y ± 1/32 ANGLE ± 2°	APRVD	YY	DATE
			06-Jun-16
			26-Jun-17
			26-Jun-17
SCALE: 0.150	SHEET 1 OF 1		
SIZE	PART NUMBER:	REV	
	432-202194	0	

2

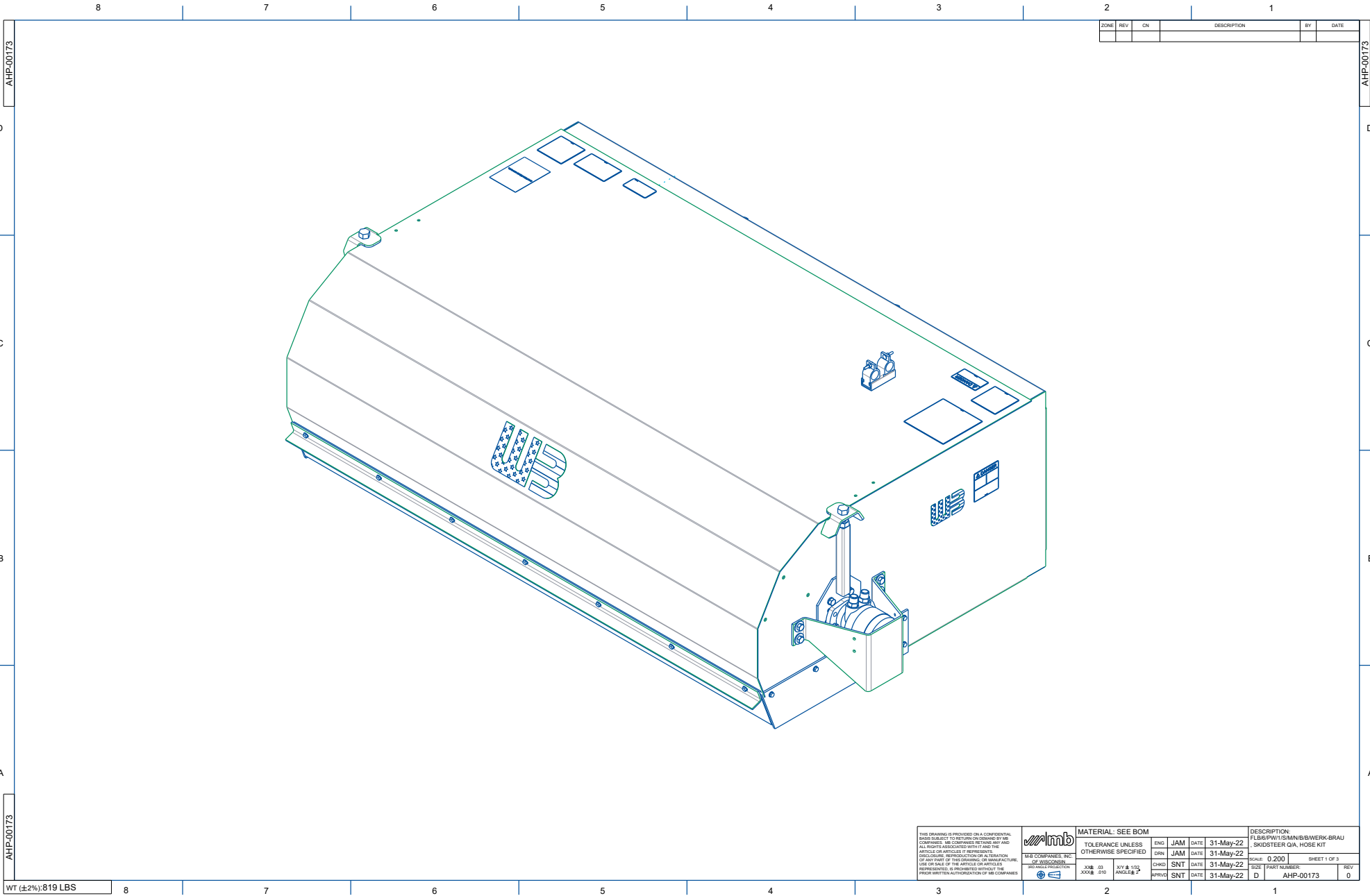
1

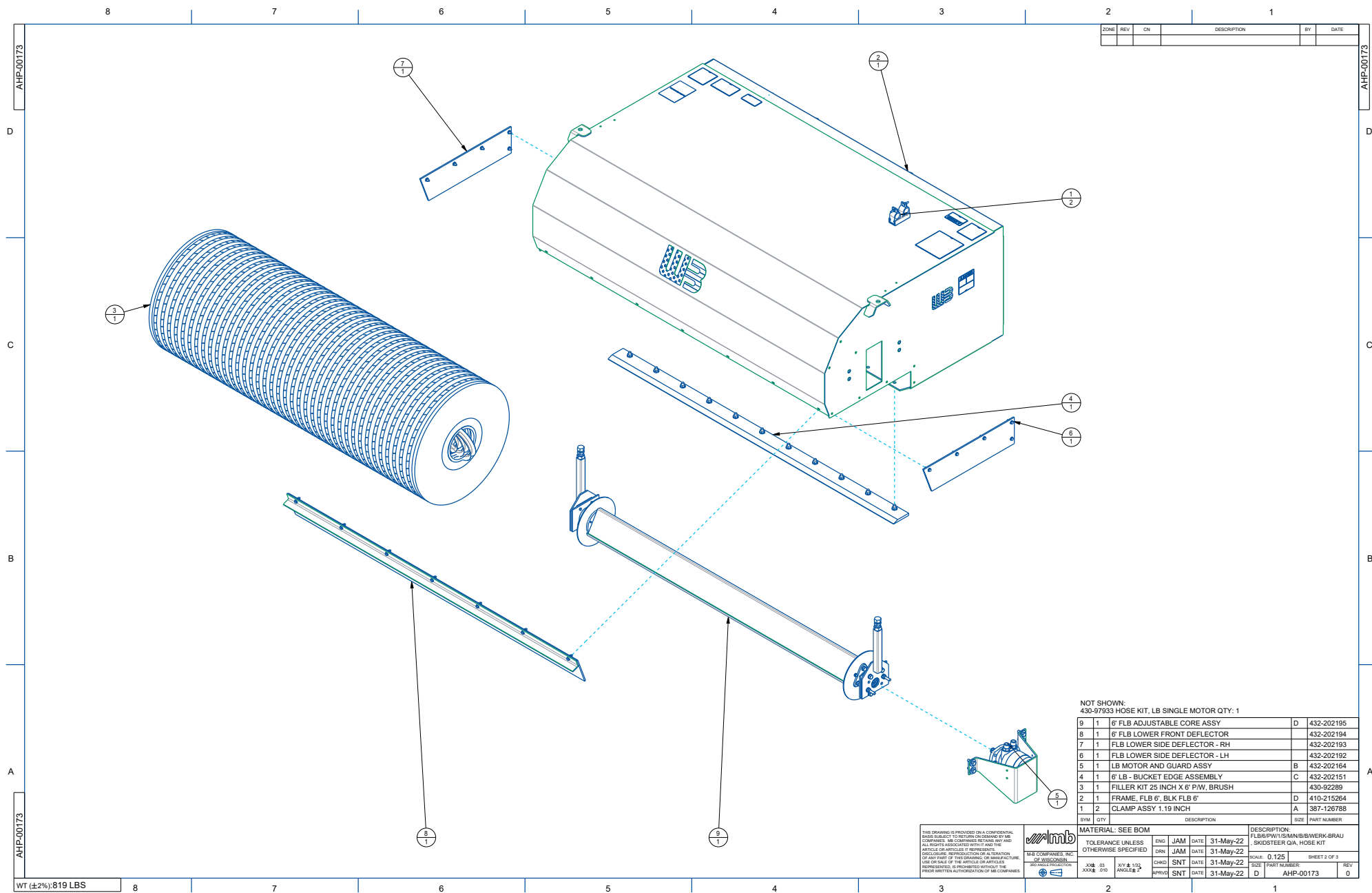


THIS DRAWING IS PROVIDED ON A CONFIDENTIAL BASIS SUBJECT TO RETURN ON DEMAND BY MB COMPANIES. MB COMPANIES RETAINS ANY AND ALL RIGHTS ASSOCIATED WITH IT AND THE ARTICLE OR ARTICLES IT REPRESENTS. DISCLOSURE, REPRODUCTION OR ALTERATION OF ANY PART OF THIS DRAWING, OR MANUFACTURE, USE OR SALE OF THE ARTICLE OR ARTICLES REPRESENTED, IS PROHIBITED WITHOUT THE PRIOR WRITTEN AUTHORIZATION OF MB COMPANIES.



16	2	BEARING, BALL 1.438 ID 2 BOLT FLANGE		X	600-90327
15	1	CORE, TRI 6-3/8 X 6"		B	410-93374
14	2	SPLINE, HUB 3-5" B.C.		B	410-93199
13	1	BRACKET, MOTOR MOUNT		B	410-126552
12	1	BRACKET, W.U. ADJUSTMENT		B	410-126551
11	2	END PLATE 6.38" SEGMENTS		X	402-93754
10	2	SPACER, MOTOR MOUNT		A	402-92850
9	2	BEARING PLATE		A	402-92718
8	2	NUT, HEX, UNC, JAM 3/4-10		A	371-35838
7	12	WASHER, LOCK -1/2 YLW ZINC PL			351-50000
6	4	WASHER, LOCK -3/8 YLW ZINC PL			351-30000
5	4	WASHER, LOCK -5/16 STD ZINC PL			351-20000
4	12	HHCS 1/2-13 UNC X 1.000		A	311-50000
3	4	HHCS 3/8-16 UNC X 1.000		A	311-31000
2	4	HHCS 5/16-18 UNC X 0.750		A	311-20750
1	2	HEX HEAD TAP BALL 3/4-10 FULL THREAD		A	311-126844
SYM QTY		SEE BOM DESCRIPTION			SIZE PART NUMBER
MATERIAL NUMBER		SEE BOM	QTY	SEE BOM	NAME
6" FLB ADJUSTABLE CORE ASSY					
TOLERANCE UNLESS OTHERWISE SPECIFIED		DIN	TMJ	DATE	16-JUN-17
SCALE: 0.200		CHD	YDY	DATE	
SHEET 1 OF 1		APPROV	YY	DATE	16-JUN-17
SIZE		D		432-202195	
2		1		1	





AHP-00173AA

8

7

6

5

4

3

:

1