

DITCHING AND GRADING BUCKET

RECOMMENDED APPLICATIONS:

Werk-Brau's ditching and grading bucket is specifically engineered for ditch maintenance, grading, slope work, and construction. This bucket is not designed for tough digging applications.

QUALITY CONSTRUCTION:

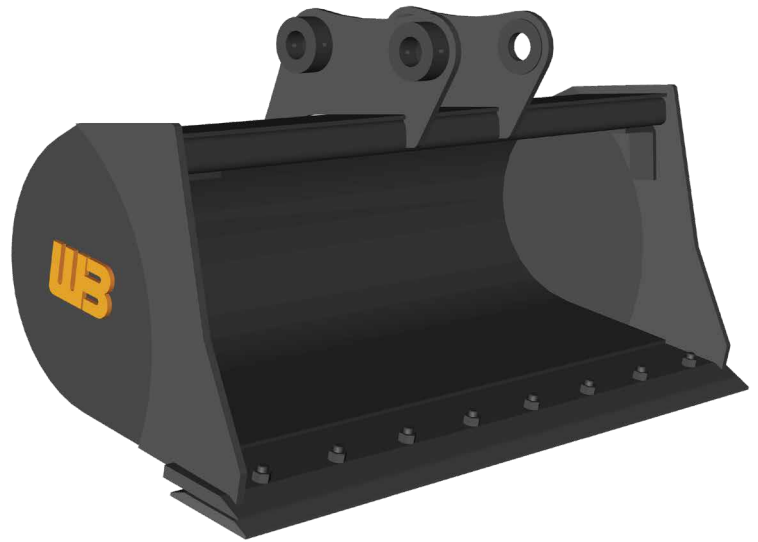
High quality T-1 steel is utilized in all high wear components. A rigid top section assures structural stability in the wider sizes. Bottom wear straps provide extra reinforcing. Each bucket is designed with tapered side plates to reduce wear on the buckets sides, and to allow for easier dumping. Bucket comes with optional suction relief holes to allow easy dumping of sticky soils found in ditch maintenance.

STANDARD SIZES AVAILABLE:

Standard widths range from 30" - 84", and capacities of .13 cu. yd. - 4.0 cu. yd.

ADDITIONAL FEATURES:

Werk-Brau recommends a bolt-on cutting edge to extend and protect the bucket edge for extended hours of operation. Additional drainage holes are available. For aquatic applications Werk-Brau offers an Aquatic Ditching Bucket. Special designs and capacities are available, please request a quote from a dealer or contact Werk-Brau directly.



CONTINUED ON NEXT PAGE

DITCHING AND GRADING BUCKET

DITCHING AND GRADING BUCKET

METRIC TON CLASS	PART NUMBER	LIP SIZE	BUCKET WIDTH	BUCKET CUT	CAPACITY STRUCK	CAPACITY RATED	WEIGHT
05	05MNDCG24	3/4" X 6"	24"	25"	1.70	2.20	130
05	05MNDCG30	3/4" X 6"	30"	31"	1.90	2.70	150
76	76MNDCG24	3/4" X 6"	24"	25"	2.50	3.00	197
76	76MNDCG30	3/4" X 6"	30"	31"	3.20	3.80	224
76	76MNDCG36	3/4" X 6"	36"	37"	3.80	4.60	250
76	76MNDCG42	3/4" X 6"	42"	43"	5.20	6.20	276
76	76MNDCG48	3/4" X 6"	48"	49"	5.80	7.00	300
1 & 15	1MNDCG24	3/4" X 6"	24"	25"	3.54	4.25	217
1 & 15	1MNDCG30	3/4" X 6"	30"	31"	4.43	5.31	244
1 & 15	1MNDCG36	3/4" X 6"	36"	37"	5.31	6.64	269
1 & 15	1MNDCG42	3/4" X 6"	42"	43"	6.20	7.40	296
1 & 15	1MNDCG48	3/4" X 6"	48"	49"	7.00	8.50	323
2, 3, U1 & U2	3MNDCG30	1" X 6"	30"	31"	6.20	7.80	484
2, 3, U1 & U2	3MNDCG36	1" X 6"	36"	37"	6.30	8.00	524
2, 3, U1 & U2	3MNDCG42	1" X 6"	42"	43"	8.80	11.00	552
2, 3, U1 & U2	3MNDCG48	1" X 6"	48"	49"	10.00	12.50	584
2, 3, U1 & U2	3MNDCG54	1" X 6"	54"	55"	11.20	14.10	614
2, 3, U1 & U2	3MNDCG60	1" X 6"	60"	61"	12.10	15.90	655
4	4MNDCG36	1" X 6"	36"	37"	9.80	11.70	664
4	4MNDCG42	1" X 6"	42"	43"	11.30	13.70	692
4	4MNDCG48	1" X 6"	48"	49"	13.00	15.80	734
4	4MNDCG54	1" X 6"	54"	55"	14.50	17.80	764
4	4MNDCG60	1" X 6"	60"	61"	15.80	19.80	805
5	5MNDCG42	1" X 8"	42"	43"	12.60	15.60	775
5	5MNDCG48	1" X 8"	48"	49"	14.40	18.00	834
5	5MNDCG54	1" X 8"	54"	55"	16.20	20.30	898
5	5MNDCG60	1" X 8"	60"	61"	18.00	22.70	855
5	5MNDCG72	1" X 8"	72"	73"	22.40	27.50	960