

# GENERAL PURPOSE LOADER BUCKETS

## RECOMMENDED APPLICATIONS:

Designed to dig in virgin soil and handle material up to 3,200 lbs./cu. yard in density.

## QUALITY CONSTRUCTION:

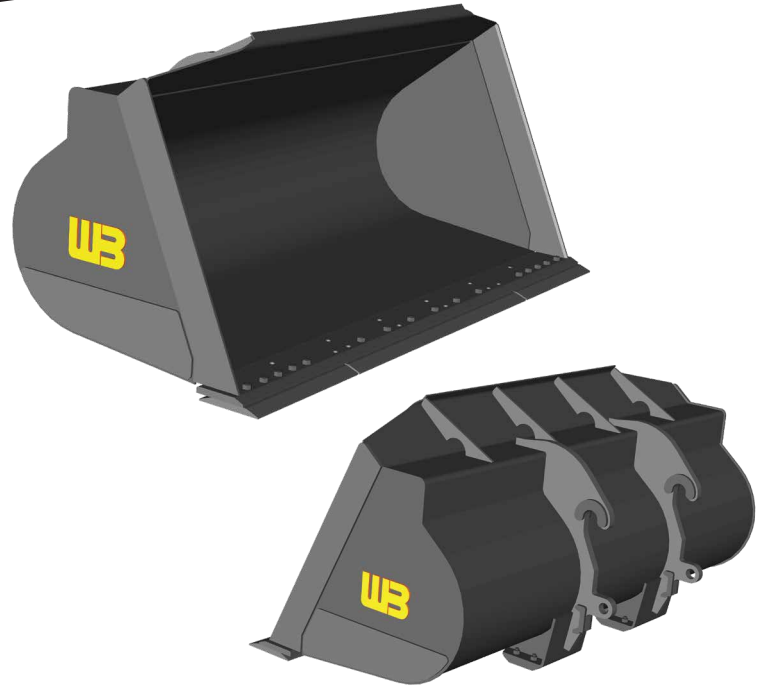
High-strength, abrasion-resistant steel is utilized in all critical components. Additional reinforcing ensures longer life in more rugged conditions. All seams are welded solid. Each bucket is engineered with tapered side plates to reduce wear on the buckets sides, and to allow for easier dumping.

## CUTTING EQUIPMENT OPTIONS:

Auxiliary edge and teeth are available upon request.

## STANDARD SIZES AVAILABLE:

3/4 cu. yd. to 8.0 cu. yds. of various widths are available. Special designs and capacities are available upon request.



## ADDITIONAL FEATURES::

All buckets attaching ears meet OEM specifications including proper "dump" and "roll" stops. Special designs and capacities are available, please request a quote from a dealer or contact Werk-Brau directly.

## GENERAL PURPOSE LOADER BUCKETS

METRIC TON CLASS	PART NUMBER	BUCKET WIDTH	EDGE LENGTH	CAPACITY STRUCK	CAPACITY RATED	WEIGHT
BH	WBL82-1.00	82"	83"	0.85	1.00	825
BH	WBL92-1.25	92"	95"	1.08	1.25	1045
BH	WBL96-1.50	96"	97"	1.27	1.50	1235
Mini	WL05GP50-.50	50"	51"	0.42	0.50	400
Mini	WL05GP62-.75	62"	63"	0.64	0.75	625
Mini	WL05GP72-1.00	72"	73"	0.85	1.00	885
1 & 19BH	WL1GP88-1.25	88"	91"	1.06	1.25	1300
1 & 19BH	WL1GP96-1.50	96"	99"	1.27	1.50	1350
1 & 19BH	*WL1GP100-2.00	100"	102"	1.69	2.00	1400

CONTINUED ON BACK

# GENERAL PURPOSE LOADER BUCKETS

## GENERAL PURPOSE LOADER BUCKETS

METRIC TON CLASS	PART NUMBER	BUCKET WIDTH	EDGE LENGTH	CAPACITY STRUCK	CAPACITY RATED	WEIGHT
1 & 19BH	*WL1GP100-2.25	100"	102"	1.91	2.25	1450
1 & 19BH	*WL1GP100-2.50	100"	102"	2.17	2.50	1500
2	*WL2GP100-2.00	100"	102"	1.69	2.00	1400
2	*WL2GP100-2.25	100"	102"	1.91	2.25	1500
2	*WL2GP100-2.50	100"	102"	2.17	2.50	1600
2	*WL2GP100-2.75	100"	102"	2.33	2.75	1650
2	*WL2GP100-3.00	100"	102"	2.547	3.00	1750
3	*WL3GP100-2.50	100"	102"	2.17	2.50	1600
3	*WL3GP100-2.75	100"	102"	2.33	2.75	1700
3	*WL3GP100-3.00	100"	102"	2.54	3.00	1900
3.5	*WL3GP100-3.00	105"	108"	2.54	3.00	2400
3.5	*WL3GP100-3.25	105"	108"	2.75	3.25	2550
3.5	*WL3GP100-3.50	105"	108"	2.97	3.50	2600
4	*WL4GP117-3.50	117"	119"	2.97	3.50	2900
4	*WL4GP117-4.00	117"	119"	3.30	4.00	3100
4	*WL4GP117-4.25	117"	119"	3.60	4.25	3250
4	*WL4GP117-4.50	117"	119"	3.81	4.50	3350
5	*WL5GP117-4.50	117"	119"	3.81	4.50	3350
5	*WL5GP117-5.00	117"	119"	4.24	5.00	3550
5	*WL5GP117-5.25	117"	119"	4.45	5.25	3650
5	*WL5GP117-5.50	121"	124"	4.60	5.50	3800
5	*WL5GP117-5.75	121"	124"	4.87	5.75	3900
5	*WL5GP117-6.00	121"	124"	5.08	6.00	3950
6	WL6GP132-6.50	132"	135"	5.51	6.50	4450
6	WL6GP138-7.50	138"	141"	6.36	7.50	4950