

# SEVERE DUTY DITCHING & GRADING BUCKET

## RECOMMENDED APPLICATIONS:

Specifically designed for ditch maintenance and construction. Also useful in grading and slope work.

## QUALITY CONSTRUCTION:

T-1 steel is utilized in all high wear components. A rigid top section assures structural stability in the wider sizes. This bucket features a double bottom, side wear guards, and a center rib. Each bucket is engineered with tapered side plates to reduce wear on the buckets sides, and to allow for easier dumping.

## CUTTING EQUIPMENT OPTIONS:

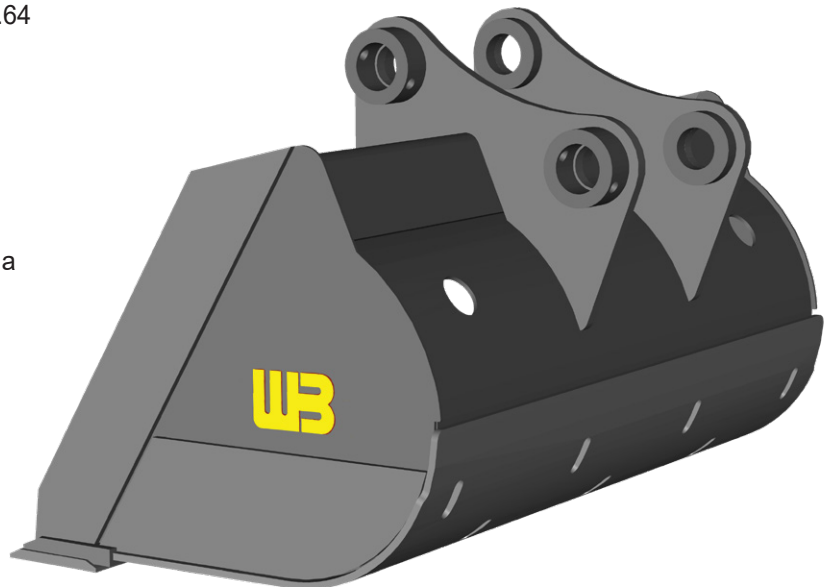
Teeth are not used on these buckets due to the application.

## STANDARD SIZES AVAILABLE:

Standard widths range from 48" - 84", and capacities of .64 cu. yd. - 4.0 cu. yd.

## ADDITIONAL FEATURES::

The Severe duty features all the same features as the standard duty, but is built to handle greater stress. This bucket features a double bottom, side wear guards, and a center rib.



CONTINUED ON NEXT PAGE

# SEVERE DUTY DITCHING & GRADING BUCKET

## SEVERE DUTY DITCHING & GRADING BUCKET

MACHINE CLASS	PART NUMBER	BUCKET WIDTH	BUCKET CUT	CAPACITY STRUCK	CAPACITY RATED	WEIGHT
Long Reach	1SDDCG48	48'	49"	0.58	0.64	1,075
Long Reach	1SDDCG54	54'	55"	0.60	0.73	1,125
Long Reach	1SDDCG60	60"	60"	0.73	1.02	1,250
12, 15 & 20	1SDDCG48	48"	19"	0.58	0.64	1,075
12, 15 & 20	1SDDCG54	54"	54"	0.65	0.73	1,125
12, 15 & 20	1SDDCG60	60"	60"	0.73	1.02	1,250
12, 15 & 20	1SDDCG66	66"	66"	0.80	1.12	1,350
12, 15 & 20	1SDDCG72	72"	72"	0.87	1.22	1,425
25	2SDDCG48	48"	49"	0.80	1.08	1,650
25	2SDDCG54	54"	55"	0.90	1.23	1,775
25	2SDDCG60	60"	61"	1.00	1.38	1,875
25	2SDDCG66	66"	67"	1.10	1.52	1,975
25	2SDDCG72	72"	73"	1.30	1.77	2,125
30	3SDDCG54	54"	56"	1.13	1.53	2,250
30	3SDDCG60	60"	62"	1.25	1.71	2,425
30	3SDDCG66	66"	68"	1.38	1.90	2,625
30	3SDDCG72	72"	74"	1.51	2.09	2,800
35	4SDDCG54	54"	56"	1.24	1.67	2,800
35	4SDDCG60	60"	62"	1.38	1.88	2,975
35	4SDDCG66	66"	68"	1.51	2.07	3,000
35	4SDDCG72	72"	74"	1.61	2.28	3,175
35	4SDDCG78	78"	80"	1.79	2.49	3,350
40	5SDDCG60	60"	62"	1.48	2.01	3,475
40	5SDDCG66	66"	68"	1.63	2.24	3,700
40	5SDDCG72	72"	74"	1.78	2.46	3,975
40	5SDDCG78	78"	78"	1.92	2.67	4,200
40	5SDDCG84	84"	84"	2.07	2.89	4,225
50	6SDDCG60	60"	62"	1.78	2.40	4,225
50	6SDDCG66	66"	66"	1.95	2.68	4,450
50	6SDDCG72	72"	74"	2.13	2.92	4,750
50	6SDDCG78	78"	80"	2.31	3.19	4,975
50	6SDDCG84	84"	86"	2.84	3.81	5,275