

# HYDRAULIC TILTING BUCKET

## RECOMMENDED APPLICATIONS:

Specifically designed to enhance a machines grading capabilities in ditch cleaning and/or sloping applications. Capable of tilting 45 degrees in either direction to increase productivity and eliminate the need for a separate tilting attachment.

## QUALITY CONSTRUCTION:

High strength steel is used throughout the weldment. Hardened greasable bushings are utilized at all pivot points. High quality cylinders complement the attachments rugged design. Each bucket is engineered with tapered side plates to reduce wear on the buckets sides, and to allow for easier dumping.

## CUTTING EQUIPMENT OPTIONS:

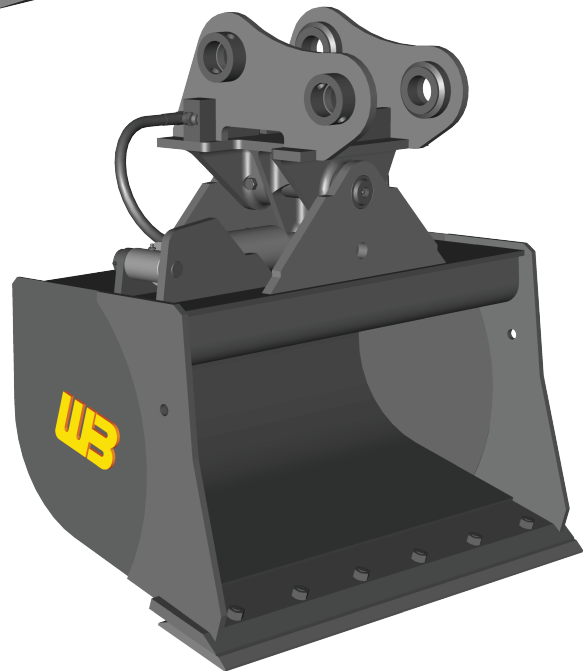
Replaceable bolt-on edge is optional equipment on bucket.

## STANDARD SIZES AVAILABLE:

Widths range from 36" up to 60". Capacities range from 3.45 cu ft. up to 15.7 cu ft. Additional sizes are available for quotation..

## ADDITIONAL FEATURES::

Eliminates the need for any additional attachment and can be utilized along with a mechanical or hydraulic coupler, also available. Special designs and capacities are available, please request a quote from a Dealer or contact Werk-Brau directly.



CONTINUED ON NEXT PAGE

# HYDRAULIC TILTING BUCKET

## HYDRAULIC TILTING AND GRADING BUCKET

MACHINE CLASS	PART NUMBER	BUCKET WIDTH	BUCKET CUT	CAPACITY STRUCK	CAPACITY RATED	WEIGHT
76	WTB05-36	36"	37"	3.00	3.45	339
76	WTB05-39	39"	43"	4.00	4.60	542
1, 15, 2 & U2	WTB1-36	36"	37"	5.50	6.30	609
1, 15, 2 & U2	WTB1-42	42"	43"	6.50	7.40	675
1, 15, 2 & U2	WTB1-48	48"	49"	7.50	8.50	713
3 & U1	WTB3-36	36"	37"	7.50	9.40	834
3 & U1	WTB3-42	42"	43"	8.75	10.00	872
3 & U1	WTB3-48	48"	49"	10.00	12.50	934
4 & 5	WTB5-48	48"	49"	10.00	12.50	934
4 & 5	WTB5-54	54"	55"	11.20	14.10	994
4 & 5	WTB5-60	60"	61"	12.50	15.70	1105