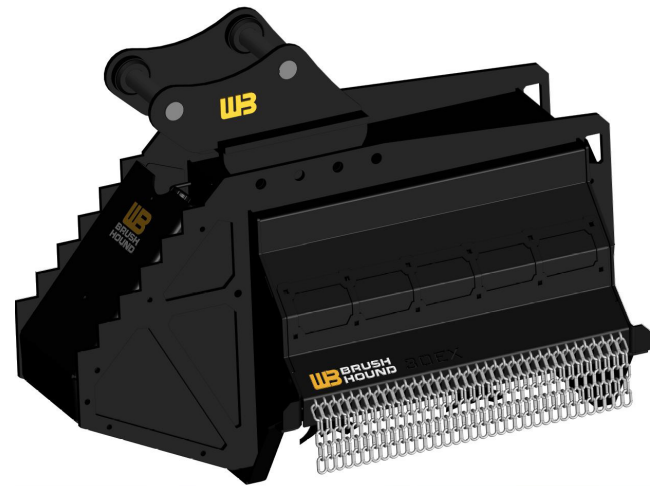


30EX BRUSH SHREDDER



PRODUCT DESCRIPTION:

Tough, lightweight and versatile, the 30EX Brush Shredder safely cuts and mulches small trees, grass and brush. It easily attaches to compact excavators and backhoes to quickly convert them into long-reach boom mowers to clear high vines and trees to the ground. Its size and design maximize cutting and mulching muscle while saving energy.

PERFORMANCE:

This 792-pound shredder is engineered to last. It utilizes the same powerful cutter drum as its bigger cousin, the 40EX Brush Shredder for durability and toughness. Its 30-inch width and 18 2.25-pound knives combined with 9 2-pound center knives provide maximum cutting capability for even the toughest jobs..

30EX Specifications

Model #	30EX
Power Unit Size	8,000 - 13,000 lbs.
Cutting Width	30"
Overall Width	56"
Weight	792 lbs.
Number of Knives	18-Slicer 9-Center
Brush Capacity	3.5"
Hydraulic Flow Required	12 GPM
Motor Type	Gear

KEY FEATURES

- **Bolt-on Excavator Mount:** Every model includes excavator-specific mount.
- **Adaptability:** Mount to most mini and compact excavators or backhoes 8,000 to 13,000 pounds.
- **Composite Dampener Washer:** Isolates operational vibration and increases drive component lifespan.
- **Wire Guards:** Anti-wrap design protects bearings and seals from debris.
- **Triple Flail Knives:** Reversible triple knife 2.25-pound side slicer knives plus a 2-pound straight knife.
- **Bolt-on Reversible Flails:** Extends the life of the flails by utilizing second edge.
- **Direct Drive Design:** Maximizes power transfer to cutter drum.
- **SAE Compliant:** Exceeds all SAE J1001 standards for flail mowers.
- **Standard Thumb Saddle:** Serrated edge works with excavator thumb to remove debris.
- **Single-Piece Frame:** Increases strength without adding weight.
- **Hoses and Couplers:** 100" Hydraulic hoses and flat face couplers are complementary.
- **Case Drain NOT Required**

