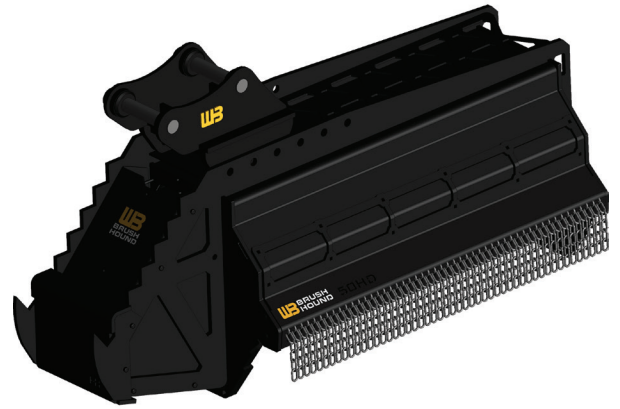


# 50EX-HD BRUSH SHREDDER



## PRODUCT DESCRIPTION:

The 50EX-HD Brush Shredder is the ultimate in tree and brush-clearing power. Quality and toughness are the industry standard. It can reduce medium-sized trees, shrubs and vegetation to mulch safely and efficiently. The largest in the EX series, designed to withstand the forces of 11 to 20-ton excavators. Cutting capacity .5-6".

## PERFORMANCE:

The BrushHound 50EX-HD weighs 1,670 pounds and is designed for professional brush-clearing durability. A piston motor is standard for high-pressure power units up to 5000 PSI. Features a severe duty 1/2" thick cutter drum and 5 pound hammers bolted to 1/2" thick ears with a 1" grade 8 bolt.

### 50EX-HD Specifications

Model #	50EX - HD
Power Unit Size	22,000 - 40,000 lbs.
Cutting Width	50"
Overall Width	80"
Weight	1,670 lbs.
Number of Knives	30 Slicer/15 Center
Brush Capacity	6"
Hydraulic Flow Required	30-54 GPM
Motor Type	Piston

## KEY FEATURES

- **High-Performance Cutter Drum:** More power for tougher tasks.
- **Extra-Strength Thumb Saddle:** Serrated edge works with excavator thumb to grab and remove debris or obstacles.
- **Bolt-on Excavator Mount:** Every model includes excavator-specific mount.
- **Piston Motor:** Standard for high pressure power units.
- **Composite Dampener Washer:** Isolates operational vibration and increases drive component lifespan.
- **HD, Single-Piece Frame:** Increases strength without adding weight.
- **Wire Guards:** Anti-wrap design protects bearings and seals from debris.
- **True Shaft Technology:** An electronically balanced cutter drum with serviceable hubs to ensure straight shafts that run smooth for years of reliable, vibration-free operation.
- **Direct Drive Design:** Maximizes power transfer to cutter drum.
- **Bolt-on Chain Guards:** Easily replaceable if damaged.
- **Optional 5-lb Hammers:** Provides high impact shredding action, standard triple shredder knives.
- **Hoses and Couplers:** 100" Hydraulic hoses and flat face couplers are complementary.
- **Case Drain Required**

