

ROCKHOUND LANDSCAPE RAKE

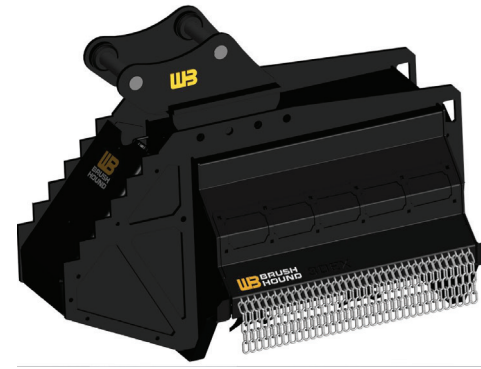
- + Original skid steer implement for landscaping tasks, including rock removal, leveling, and seedbed prep
- + Picks up rocks as small as 3/4" and most up to 8"
- + Hydraulically operated bucket opens from the top for easy unloading
- + Versatile attachment with optional adapter plate for tractors with Category 2 3-point hitch



PLACEHOLDER

BRUSHHOUND 30EX BRUSH SHREDDER

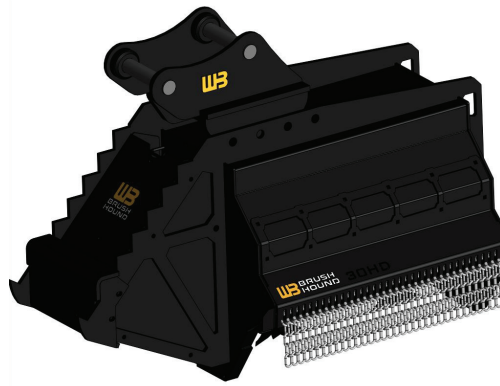
- + Versatile, lightweight tool designed for cutting and mulching small trees, grass, and brush safely
- + Attaches easily to compact excavators and backhoes, fitting most models weighing between 8,000 to 13,000 pounds
- + Includes a composite dampener washer to reduce operational vibration, wire guards for anti-wrap protection, and reversible flails for extended lifespan
- + Exceeds all SAE J1001 standards for flail mowers



PLACEHOLDER

BRUSHHOUND 30EX-HD BRUSH SHREDDER

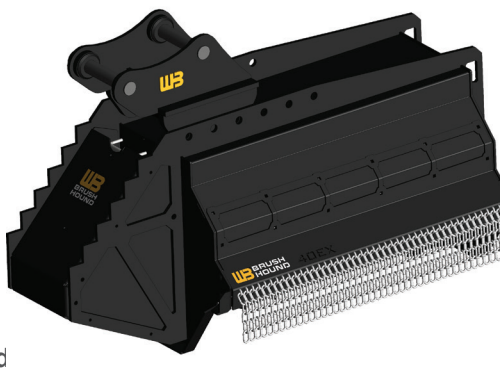
- + Tough, lightweight, and versatile tool designed to safely cut and mulch small trees, grass and brush
- + Mount to most mini and compact excavators or backhoes 10,000 to 16,000 pounds
- + Equipped with eighteen 2.25-pound knives and nine 2-pound center knives for maximum cutting capability
- + SAE compliant with included hoses and couplers



PLACEHOLDER

BRUSHHOUND 40EX BRUSH SHREDDER

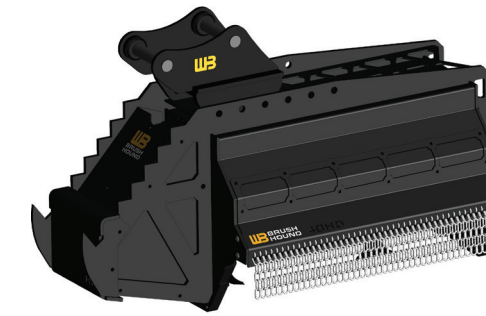
- + Efficiently mulches medium-sized trees and vegetation with a cutting capacity of 0.5-4 inches
- + Equipped with 24 slicer and 12 center-sharpened knives over a 40-inch cutting width
- + Compatible with most compact excavators or backhoes 16,000 to 24,000 pounds
- + Composite dampener washers and True Shaft Technology guarantee vibration-free operation and exceed SAE J1001 standards



PLACEHOLDER

BRUSHHOUND 40EX-HD BRUSH SHREDDER

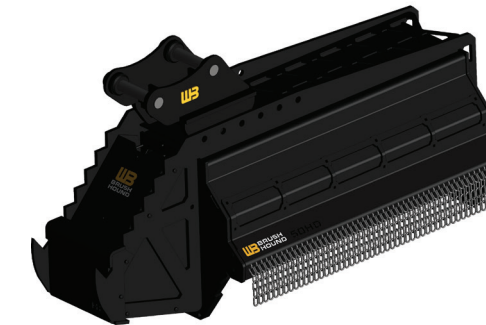
- + A robust tool that quickly turns a tree, brush pile, or woody area into mulch
- + Compatible with most compact excavators or backhoes weighing 16,000 to 24,000 pounds
- + True Shaft Technology and reversible triple knife design ensure reliable, vibration-free operation
- + Exceeds all SAE J1001 standards for flail mowers



PLACEHOLDER

BRUSHHOUND 50EX-HD BRUSH SHREDDER

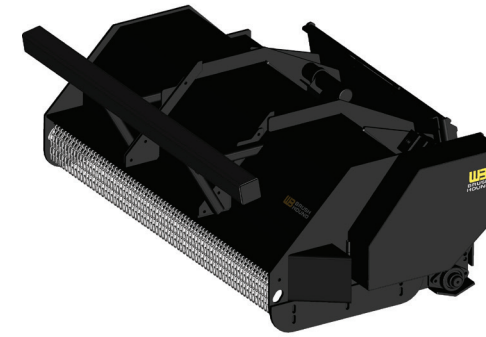
- + Can quickly reduce medium-sized trees, shrubs and vegetation to mulch.
- + The largest in the EX-series, designed to withstand 11 to 20-ton excavators with a cutting capacity of .5-6"
- + Features a piston motor, standard for high-pressure power units up to 5000 PSI
- + HD, Single-Piece Frame increases strength without adding weight



PLACEHOLDER

BRUSHHOUND FH-SERIES BRUSH SHREDDER

- + Offers 5, 6, and 7-foot cutting widths to efficiently mulch heavy vegetation up to 5 inches thick
- + Front-mounted with a universal skid steer style mounting plate
- + Gear-type hydraulic drive with motor protection
- + Reversible triple knives for maximum cutting capacity



PLACEHOLDER

BRUSHHOUND FHX DEFENDER MULCHER

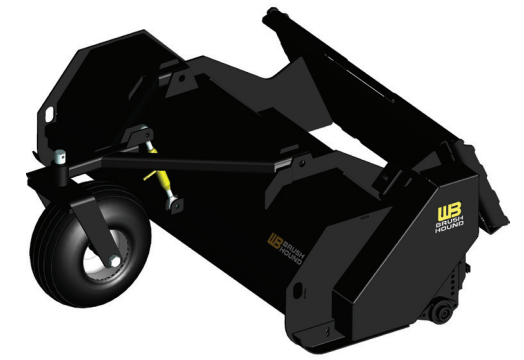
- + Allows standard flow skid steers and track loaders to become powerful fuel reduction and land clearing tools
- + Power unit must be equipped with 1/2" Lexan® glass (or equal) and falling object protection
- + Cutting capacity up to 10" intermittently, 6" continuous
- + Only 17 GPM hydraulic flow required



PLACEHOLDER

BRUSHHOUND F-SERIES BRUSH MOWER

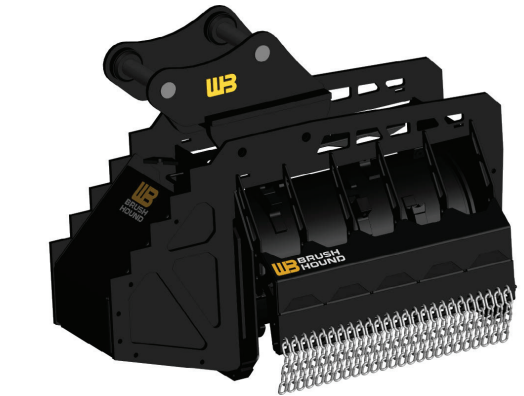
- + Safest of their kind on the market today
- + Available in three widths (4, 5 and 6 feet) with a cutting capacity up to 1"
- + Front mounted with a universal skid steer style mounting plate
- + True Shaft technology ensures straight shafts run smooth



PLACEHOLDER

BRUSHHOUND FX26 DEFENDER MULCHER

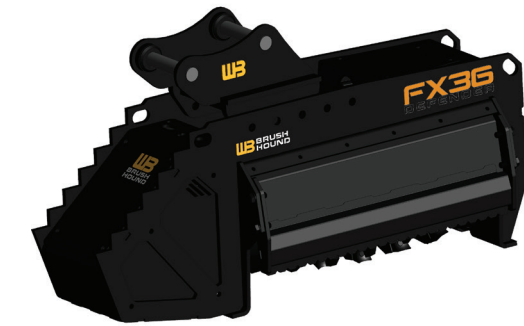
- + Designed to operate on the standard thumb circuit on all 8,000 to 16,000-pound compact and mini excavators
- + Quadco QUAD TOOTH® cutter knives with a cutting capacity of .5-6"
- + Ideal for property maintenance, right-of-way clearing, and wildfire prevention efforts
- + Engineered for durability and ease of maintenance with Hydraulic Direct Drive



PLACEHOLDER

BRUSHHOUND FX36 DEFENDER MULCHER

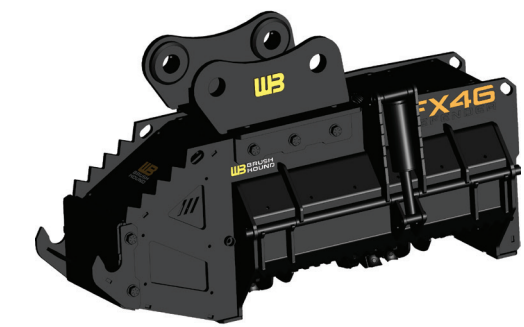
- + Engineered to work efficiently with mid-sized excavators from 16 to 32 thousand pounds
- + Quadco QUAD TOOTH® cutter knives quickly cut trees up to 8 inches in diameter
- + Only 25 GPM hydraulic flow required
- + True Shaft technology for vibration-free operation



PLACEHOLDER

BRUSHHOUND FX46 DEFENDER MULCHER

- + Ideal for land clearing and vegetation management, handling materials up to 10 inches in diameter
- + Compatible with 25,000-to-45,000-pound excavators
- + Multi-tooth options
- + 35-70 GPM Hydraulic Flow required



PLACEHOLDER




WB[®]
WERK-BRAU

For a list of dealers
or more information:

Werk-Brau.com
1-800-537-9561

419-422-7207 fax
2800 Fostoria Avenue
Findlay, OH 45840 USA



WB BRUSH
HOUND

WB ROCK
HOUND

**FORESTRY &
LAND CLEARING**