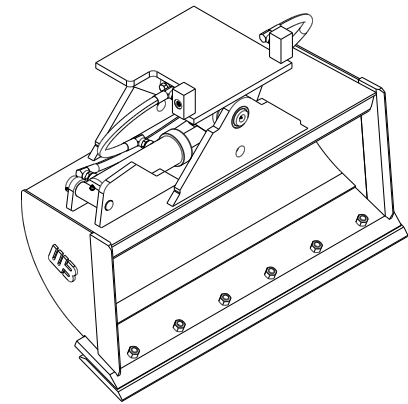
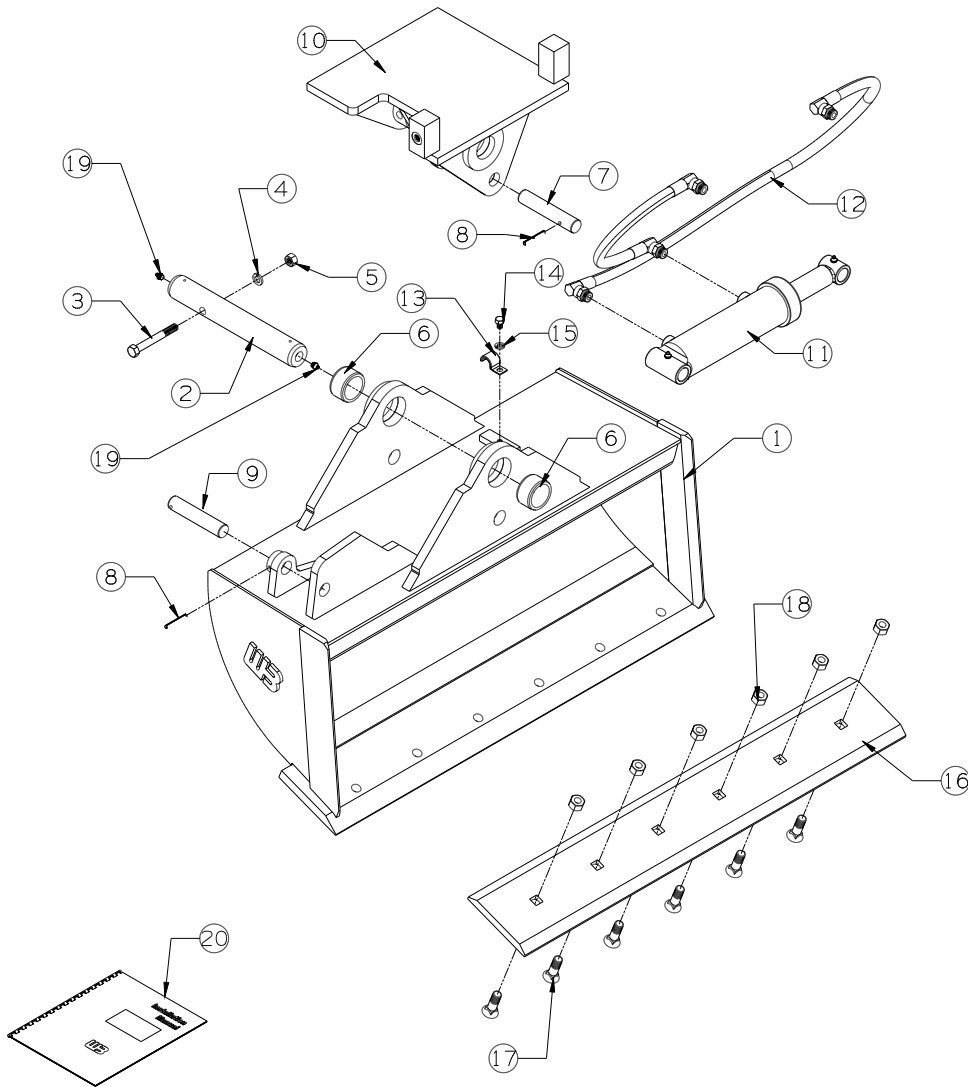


REV	DATE	CHANGE DESCRIPTION	BY	CHECKED
A	4-10-18	RELEASED TO PRODUCTION	JAS	-
B	5/10/22	UPDATED SHELL CALLOUT	JGM	-
-	-	-	-	-



WTB05-36-PACKLIST

#	DESCRIPTION	PART #	AMT
1	WELDED ASSEMBLY	WTB36-3.00(B/S)	1
2	PIVOT PIN	TIB-PP-07	1
3	1/2-13 X 4 BOLT	13207	1
4	1/2 LOCK WASHER	33626	1
5	1/2-13 UNC NUT	36310	1
6	PIVOT BUSHING	TIB-BP-05	2
7	CYLINDER PIN	TIB-CP-13	1
8	ROLL PIN	N/A	2
9	CYLINDER PIN	TIB-CP-14	1
10	TILT TOP	TIB-TI-10	1
11	CYLINDER	500010415	1
12	HOSE KIT	WTB05-HK	1
13	HOSE CLAMP	1BAB6	1
14	3/8-16 UNC X 3/4 BOLT	13103	1
15	3/8 LOCK WASHER	33622	2
16	BOLT ON CUTTING EDGE	WB30029	1
17	5/8 X 2 PLOW BOLTS	22685	6
18	5/8-11 UNC NUTS	36314	6
19	GREASE ZERK	60102	2
20	INSTRUCTIONS	INST-WTB	1



WERK-BRAU CO., INC.
 2800 FOSTORIA AVE. P.O. BOX 545 FINDLAY, OHIO 45840-0545
 www.werkbrau.com PHONE: 419-422-2912 FAX: 419-422-7207

INCH 1/X: ± 1/16
 .X: ± .1
 .XX: ± .01
 .XXX: ± .005
 .XXXX: ± .0005
 METRIC X: ± 1.50
 X.X: ± 0.80
 X.XX: ± 0.25
 ANGLE ± 0.5°
 NOT TO SCALE

WELD SPEC: WELDS TO CONFORM TO P7.PRO6-WB ARC WELDING QUALITY STANDARD

DATE: 4-10-18

WEIGHT: - Lbs.

MACHINE: -

PART No.: WTB05-36

FILE NAME: WTB05-36.CKD

THIS PRINT AND THE INFORMATION CONTAINED HERE ON IS A CONFIDENTIAL DISCLOSURE, THE SUBJECT MATTER OF WHICH IS THE PROPERTY OF: WERK-BRAU CO., INC.

DRAWN:

B
 REVISION

JASE