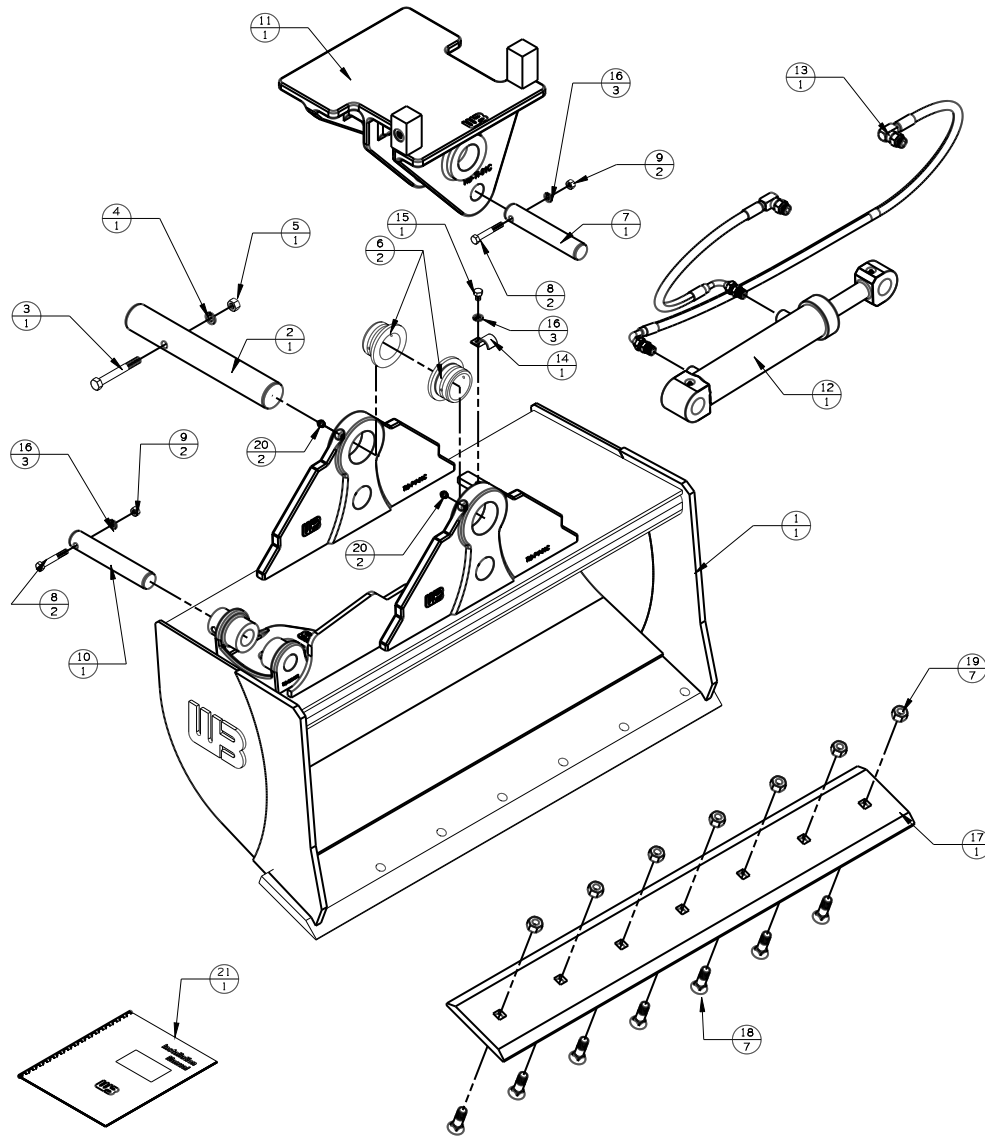


REV	DATE	CHANGE DESCRIPTION	BY	CHECKED	WELD CHECK
A	4-11-18	RELEASED TO PRODUCTION	JAS	-	-
B	5/12/22	UPDATED SHELL CALLOUT	JGM	-	-
C	3-15-23	UPDATED PIVOT PIN FROM TIB-PP-07	GFS	-	-



WTB1-42-PACKLIST

#	DESCRIPTION	PART #	AMT
1	WELDED ASSEMBLY	WTB42-7.40(S/B)	1
2	PIVOT PIN	TIB-PP-10	1
3	1/2-13 X 4 BOLT	13207	1
4	1/2 LOCK WASHER	33626	1
5	1/2-13 UNC NUT	36310	1
6	PIVOT BUSHING	TIB-BP-06	2
7	CYLINDER PIN	TIB-CP-01	1
8	3/8-16 UNC X 2 1/2 BOLT	N/A	2
9	3/8-16 UNC NUT	36306	2
10	CYLINDER PIN	TIB-CP-02	1
11	TILT TOP	TIB-TI-01C	1
12	CYLINDER	500010414	1
13	HOSE KIT	WTB1-HK	1
14	HOSE CLAMP	1BAB6	1
15	3/8-16 UNC X 3/4 BOLT	13103	1
16	3/8 LOCK WASHER	33622	3
17	BOLT ON CUTTING EDGE	WB30028	1
18	5/8 X 2 PLOW BOLTS	22685	7
19	5/8-11 UNC NUTS	36314	7
20	GREASE ZERK	60102	2
21	INSTRUCTIONS	INST-WTB	1



WERK-BRAU CO., INC.
 2800 FOSTORIA AVE. P.O. BOX 545 FINDLAY, OHIO 45840-0545
 www.werkbrau.com PHONE: 419-422-2912 FAX: 419-422-7207

INCH 1/X: ± 1/16 X: ± 1.50
 .X: ± .1 X.X: ± 0.80
 .XX: ± .01 X.XX: ± 0.25
 .XXX: ± .005 ANGLE ± 0.5°
 .XXXX: ± .0005 NOT TO SCALE

WELD SPEC: WELDS TO CONFORM TO P7.PRO6-WB ARC WELDING QUALITY STANDARD

DATE: 4-11-18

WEIGHT: - Lbs.

MACHINE: -

PART No.: WTB1-42

FILE NAME: WTB1-42.CKD



THIS PRINT AND THE INFORMATION CONTAINED HERE ON IS A CONFIDENTIAL DISCLOSURE, THE SUBJECT MATTER OF WHICH IS THE PROPERTY OF: WERK-BRAU CO., INC.

DRAWN:

