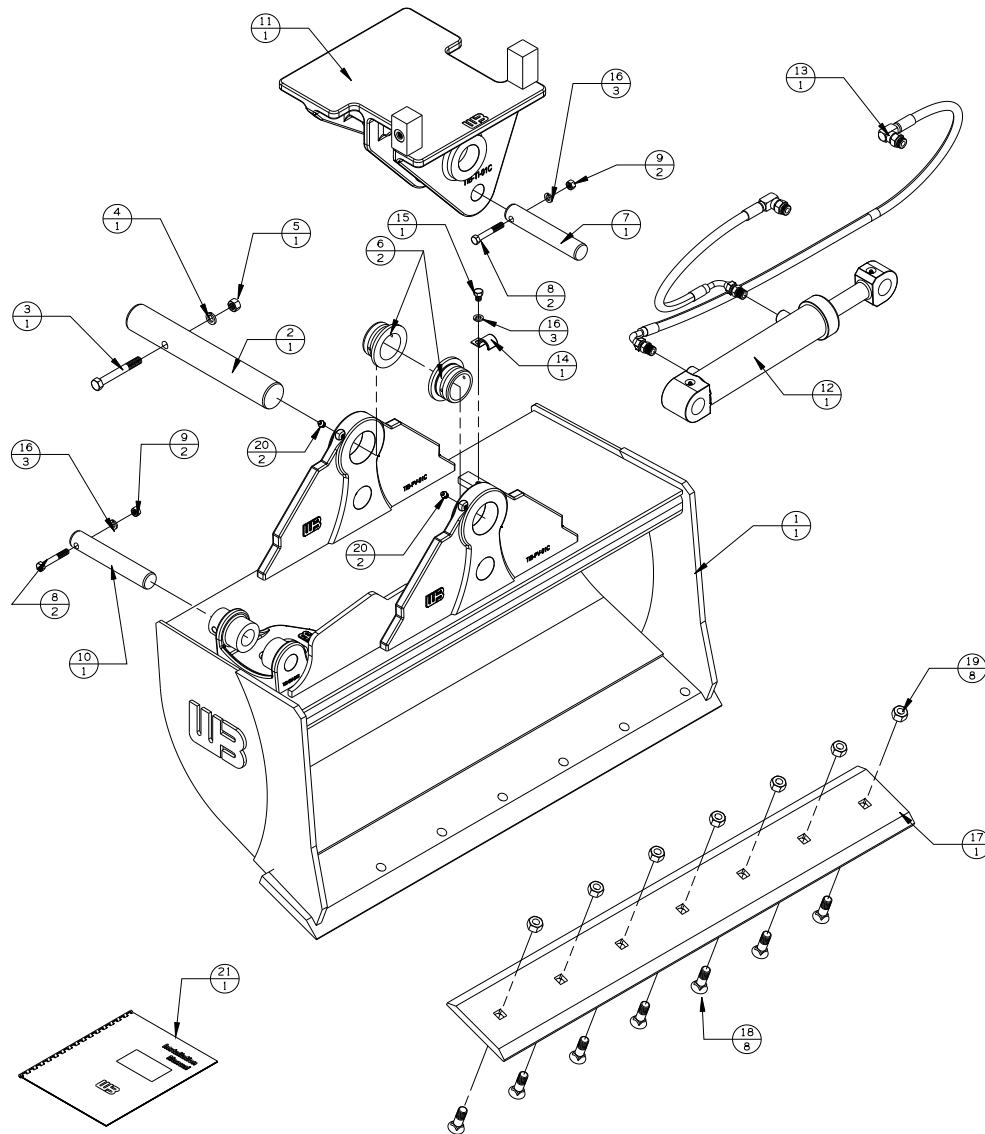


| REV | DATE | CHANGE DESCRIPTION | BY | CHECKED | WELD CHECK |
|-----|---------|------------------------|-----|---------|------------|
| A | 4-11-18 | RELEASED TO PRODUCTION | JAS | - | - |
| B | 6-19-20 | UPDATED BOLTS FOR BOE | NAH | - | - |
| C | 5/12/22 | UPDATED SHELL CALLOUT | JCM | - | - |



WTB1-48-PACKLIST

| # | DESCRIPTION | PART # | AMT |
|----|-------------------------|-----------------|-----|
| 1 | WELDED ASSEMBLY | WTB48-8.50(S/B) | 1 |
| 2 | PIVOT PIN | TIB-PP-07 | 1 |
| 3 | 1/2-13 X 4 BOLT | 13207 | 1 |
| 4 | 1/2 LOCK WASHER | 33626 | 1 |
| 5 | 1/2-13 UNC NUT | 36310 | 1 |
| 6 | PIVOT BUSHING | TIB-BP-06 | 2 |
| 7 | CYLINDER PIN | TIB-CP-01 | 1 |
| 8 | 3/8-16 UNC X 2 1/2 BOLT | N/A | 2 |
| 9 | 3/8-16 UNC NUT | 36306 | 2 |
| 10 | CYLINDER PIN | TIB-CP-02 | 1 |
| 11 | TILT TOP | TIB-TI-01C | 1 |
| 12 | CYLINDER | 500010414 | 1 |
| 13 | HOSE KIT | WTB1-HK | 1 |
| 14 | HOSE CLAMP | 1BAB6 | 1 |
| 15 | 3/8-16 UNC X 3/4 BOLT | 13103 | 1 |
| 16 | 3/8 LOCK WASHER | 33622 | 3 |
| 17 | BOLT ON CUTTING EDGE | X310061 | 1 |
| 18 | 3/4 X 2 PLOW BOLTS | 22705 | 8 |
| 19 | 3/4-10 UNC NUTS | 36316 | 8 |
| 20 | GREASE ZERK | 60102 | 2 |
| 21 | INSTRUCTIONS | INST-WTB | 1 |



WERK-BRAU CO., INC.
 2800 FOSTORIA AVE. P.O. BOX 545 FINDLAY, OHIO 45840-0545
 www.werkbrau.com PHONE: 419-422-2912 FAX: 419-422-7207

INCH 1/X: ± 1/16 X: ± 1.50
 .X: ± .1 X.X: ± 0.80
 .XX: ± .01 X.XX: ± 0.25
 .XXX: ± .005 ANGLE ± 0.5°
 .XXXX: ± .0005 NOT TO SCALE

WELD SPEC: WELDS TO CONFORM TO P7.PRO6-WB ARC WELDING QUALITY STANDARD

DATE: 4-11-18

WEIGHT: - Lbs.

MACHINE: -

PART No.: WTB1-48

FILE NAME: WTB1-48.CKD

THIS PRINT AND THE INFORMATION CONTAINED HERE ON IS A CONFIDENTIAL DISCLOSURE, THE SUBJECT MATTER OF WHICH IS THE PROPERTY OF: WERK-BRAU CO., INC.

DRAWN:

B
REVISION

