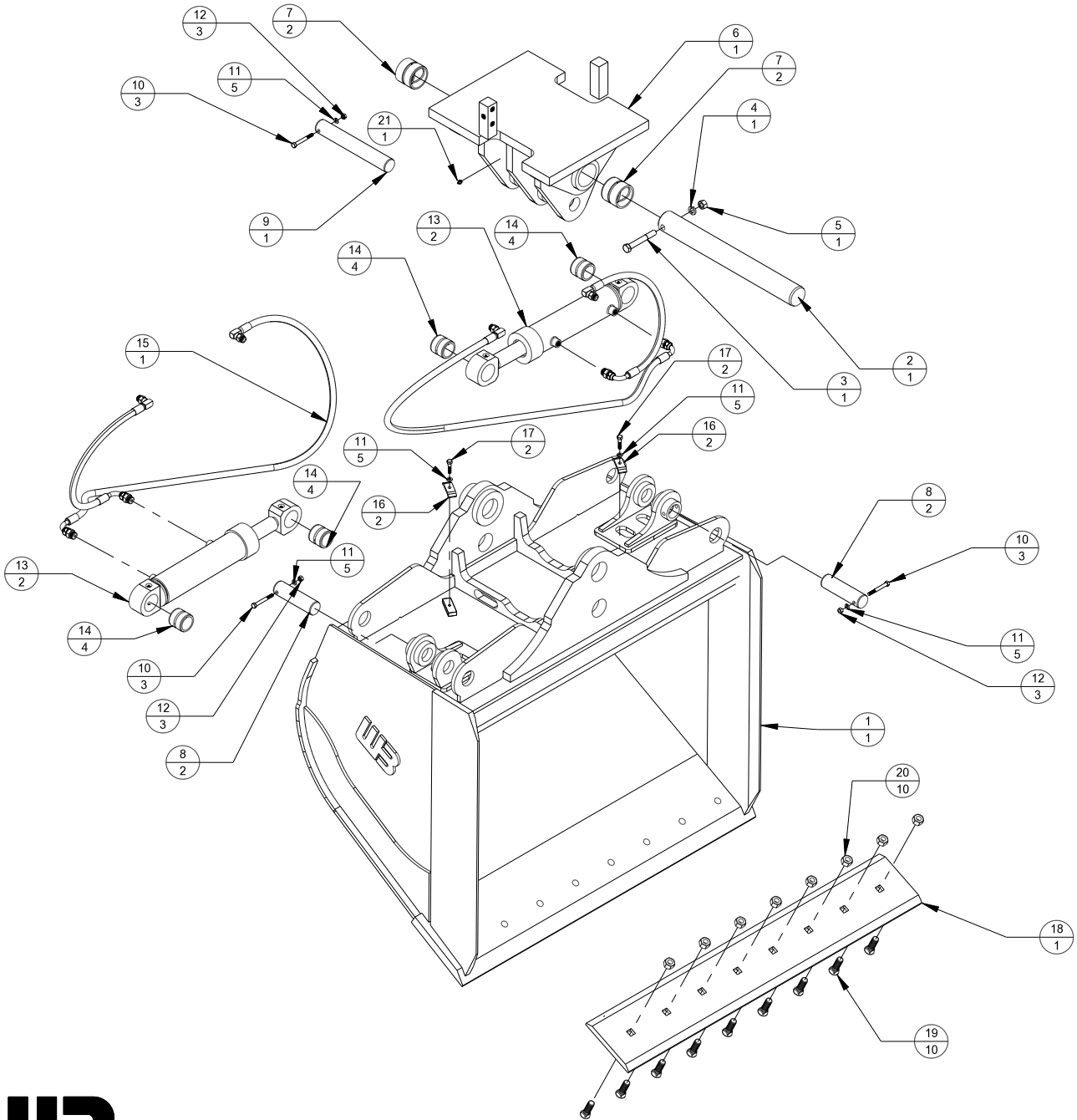


ECO	REV	DATE	CHANGE DESCRIPTION	BY	CHECKED
-	A	4/27/16	RELEASED TO PRODUCTION	JAS	-
-	B	2/16/22	CORRECTED BOCE PART NUMBER-WAS X310061	JLS	-
-	C	4/7/22	UPDATD PIN CAP - WAS TIB-PC-01	JEH	-
-	D	3/15/23	UDPATED TO USE TIB-TI-11 TILT TOP	JGM	-

ENGINEERING NOTES:

METRIC
X ± 1.50
X.X: ± 0.80
X.XX: ± 0.25
ANGLE ± 0.5°
NOT TO SCALE



WTB48-1.00 PACKLIST

#	DESCRIPTION	PART NUMBER	AMT
1	WELDED ASSEMBLY	WTB48-1.00 (B/S)	1
2	PIVOT PIN	PIN-0484	1
3	5/8"-11 x 4-1/2" BOLT	13321	1
4	5/8" LOCKWASHER	33630	1
5	5/8"-11 HEX NUT	36314	1
6	TILT TOP	TIB-TI-11 (B/S)	1
7	PIVOT BUSHING	EZG-BU-300-65	2
8	CYLINDER PIN	TIB-CP-06	2
9	CYLINDER PIN	TIB-CP-07	1
10	3/8"-16 X 3" BOLT	13115	3
11	3/8" LOCKWASHER	33622	5
12	3/8"-16 HEX NUT	36306	3
13	CYLINDER	323-913	2
14	CYLINDER BUSHINGS	QBWL-BC-4	4
15	HOSE KIT	TIB-HK-48-1.0	1
16	HOSE CLAMP	D143846	2
17	3/8"-16 X 1-1/4" BOLT	13107	2
18	BOLT ON CUTTING EDGE	1X10X49-1/2BOE	1
19	3/4" X 2-1/2" PLOW BOLTS	22707	8
20	3/4"-10 HEX NUTS	36316	8
21	GREASE ZERK	60102	1
22	-	-	-
23	-	-	-
24	-	-	-
25	-	-	-
26	-	-	-
27	-	-	-
28	-	-	-
29	-	-	-



FILE NAME: WTB48-1.00.CKD	D
DESCRIPTION: PACKLIST	
WEIGHT: - lbs.	REVISION
DRAWN: JAS	
DATE: 4/27/16	