

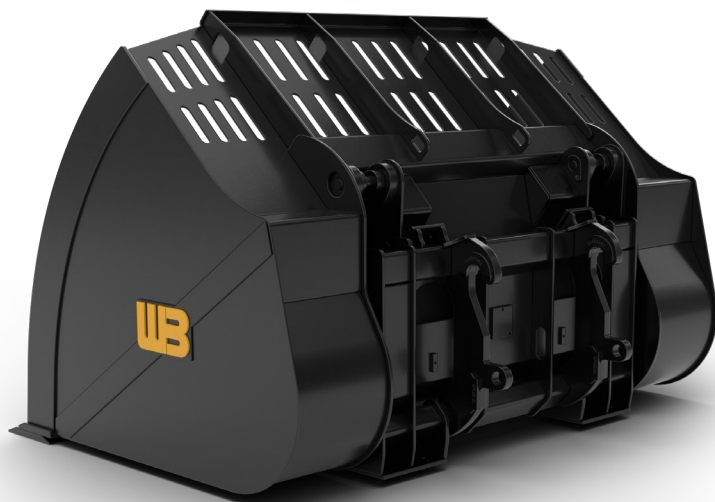
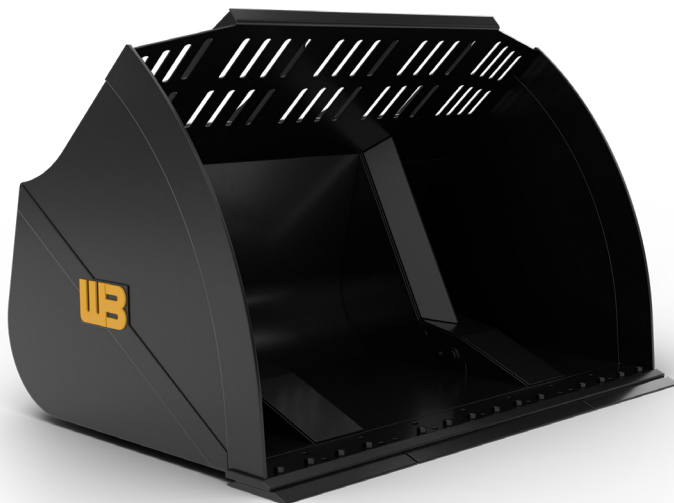
HIGH-TIP/ROLL-OUT BUCKET (VERTICAL CYLINDER STYLE)

RECOMMENDED APPLICATIONS:

Specifically designed for increased dump height 24"+ which is perfect for backfilling or loading trucks and re-handling light materials up to 2,000 lbs.

ADDITIONAL FEATURES:

With the vertical cylinder design, it maintains better control of dump action due to cylinder mechanism. Bucket design incorporates a recessed carriage design to improve center of gravity. This mean less tippyness and less stress on the loader and bucket. Visibility slots come standard along with dual cushioned cylinders and performance side plates for increased material retention.



HIGH-TIP/ROLL-OUT BUCKET (VERTICAL CYLINDER STYLE)

HIGH-TIP/ROLL-OUT BUCKETS (VERTICAL CYLINDER STYLE)

LOADER CLASS	PART NUMBER	BUCKET WIDTH	EDGE LENGTH	CAPACITY STRUCK	CAPACITY RATED	WEIGHT
1	WL1HTV100-3.00	100"	102"	2.15	3.00	3,275
2	WL2HTV100-4.00	100"	102"	3.39	4.00	4,275
2	WL2HTV100-5.00	100"	102"	4.24	5.00	4,775
3	WL3HTV100-5.00	100"	102"	4.24	5.00	5,150
3	WL3HTV100-6.00	100"	102"	5.08	6.00	5,650
3.5	WL3.5HTV105-5.00	105"	108"	4.24	5.00	5,350
3.5	WL3.5HTV105-6.00	105"	108"	5.08	6.00	5,850
4	WL4HTV117-6.00	117"	119"	5.08	6.00	6,350
4	WL4HTV117-7.00	117"	119"	5.93	7.00	6,350
4	WL4HTV117-8.00	117"	119"	6.75	8.00	7,850
4	WL4HTV117-9.00	117"	119"	7.70	9.00	7,885
4	WL4HTV124-10.00	124"	125"	8.40	10.00	9,453
5	WL5HTV124-8.00	124"	125"	6.70	8.00	8,265
5	WL5HTV124-10.00	124"	125"	8.40	10.00	9,453
5	WL5HTV132-12.00	132"	134"	10.10	12.00	10,000
6	WL6HTV144-10.00	144"	146"	8.40	10.00	10,498
6	WL6HTV144-12.00	144"	146"	10.10	12.00	12,255
6	WL6HTV144-14.00	144"	146"	11.50	14.00	14,000